

PEORIA, ILLINOIS

AL-597 (FAA)

WAAS CH 77509 W31A	APP CRS 306°	Rwy Idg 10104 TDZE 651 Apt Elev 660
--	------------------------	--

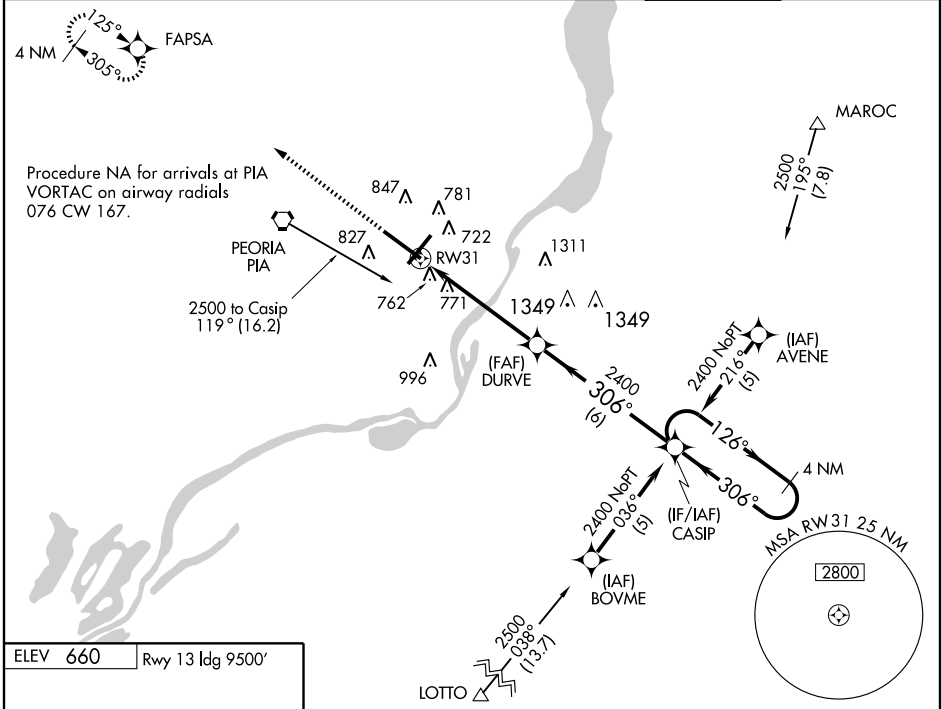
RNAV (GPS) RWY 31

PEORIA/GREATER PEORIA RGNL(PIA)

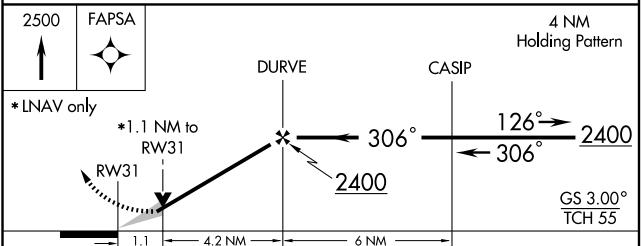
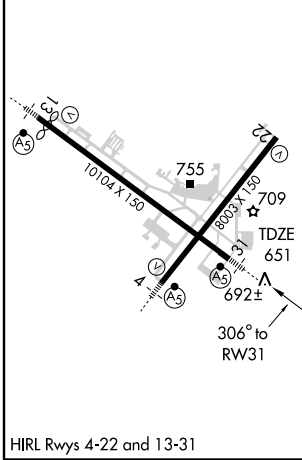
Baro-VNAV NA below -16°C (4°F). DME/DME RNP-0.3 NA.
 For inoperative MALSR, increase LPV visibility to RVR 5000 all Cats, and LNAV Cat. D visibility to RVR 6000. If local altimeter setting not received, use Logan County altimeter setting and increase all DAs/MDAs 100 feet.

MALSR 	MISSED APPROACH: Climb to 2500 direct FAPSA and hold.
-----------	---

ATIS 126.10 282.2	PEORIA APP CON 125.8 269.2 (305°-125°) 124.675 326.2 (126°-304°)	PEORIA TOWER 119.1 252.9	GND CON 121.85 348.6
-----------------------------	---	------------------------------------	--------------------------------



ELEV 660	Rwy 13 Idg 9500'
----------	------------------



CATEGORY	A	B	C	D
LPV DA	940/24		289 (300-½)	
LNAV/VNAV DA	1123/60		472 (500-1¼)	
LNAV MDA	1040/24		389 (400-½)	
CIRCLING	1160-1¾		500 (500-1¾)	
			1040/50 389 (400-1) 1220-2 560 (600-2)	

PEORIA, ILLINOIS
Amdt 1 07298

40° 40' N - 89° 42' W

PEORIA/GREATER PEORIA RGNL(PIA)

RNAV (GPS) RWY 31

EC-3, 22 OCT 2009 to 19 NOV 2009

EC-3, 22 OCT 2009 to 19 NOV 2009