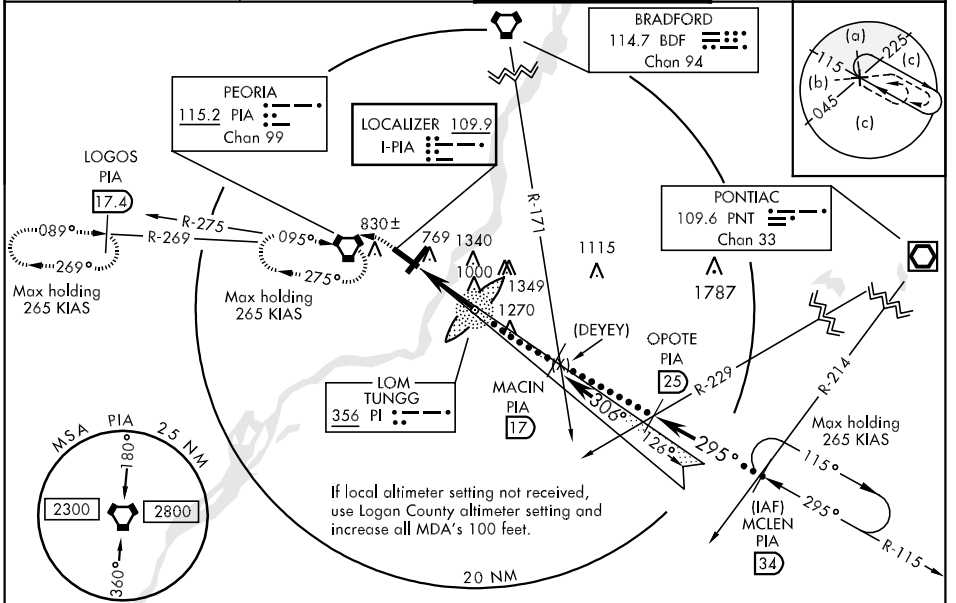


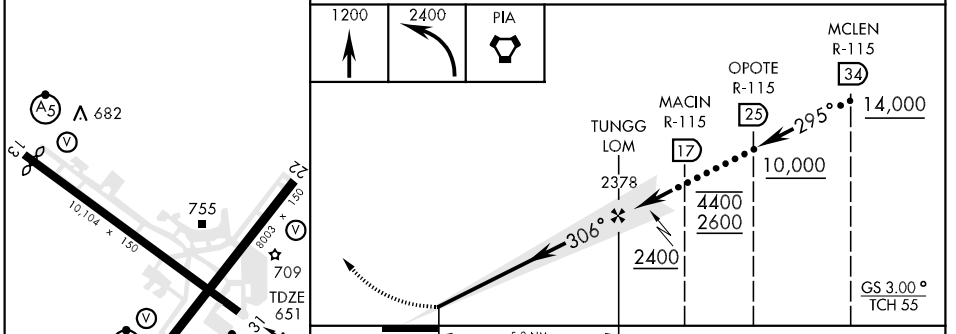
LOC I-PIA 109.9	APCH CRS 306°	Rwy Idg 10,104 TDZE 651 Arpt Elev 660	JAL 597 [USAF]	PEORIA/GREATER PEORIA REGIONAL (KPIA)
---------------------------	-------------------------	------------------------------------------------------------------	----------------	---------------------------------------

MALSRL MISSED APPROACH: Climb to 1200, then climbing left turn to 2400 direct PIA VORTAC and hold. (TACAN aircraft: continue via PIA R-269 to LOGOS 17.4 DME and hold west, right turn 089° inbound).
 * When ALS inop, increase vis CAT CDE ¼ mile.
 ** When ALS inop, increase vis CAT CDE ½ mile.

ATIS 126.1 282.2	PEORIA APP CON 305°-125° 125.8 269.2 126°-304° 124.675 326.2	PEORIA TOWER 119.1 252.9	GND CON 121.85 348.6
----------------------------	----------------------------------------------------------------------------------	------------------------------------	--------------------------------



ELEV 660	Rwy 13 Idg 9500'
----------	------------------



	C	D	E
S-ILS 31*	851/24	200	(200-½)
S-LOC 31**	1020/24 369 (400-½)	1020/40	369 (400-¾)
CIRCLING	1160-1½ 500 (500-1½)	1220-2 560 (600-2)	1680-3 1020 (1100-3)

EC-3, 22 OCT 2009 to 19 NOV 2009

EC-3, 22 OCT 2009 to 19 NOV 2009