


# RNAV (GPS) RWY 23

COLUMBUS MUNI (BAK)

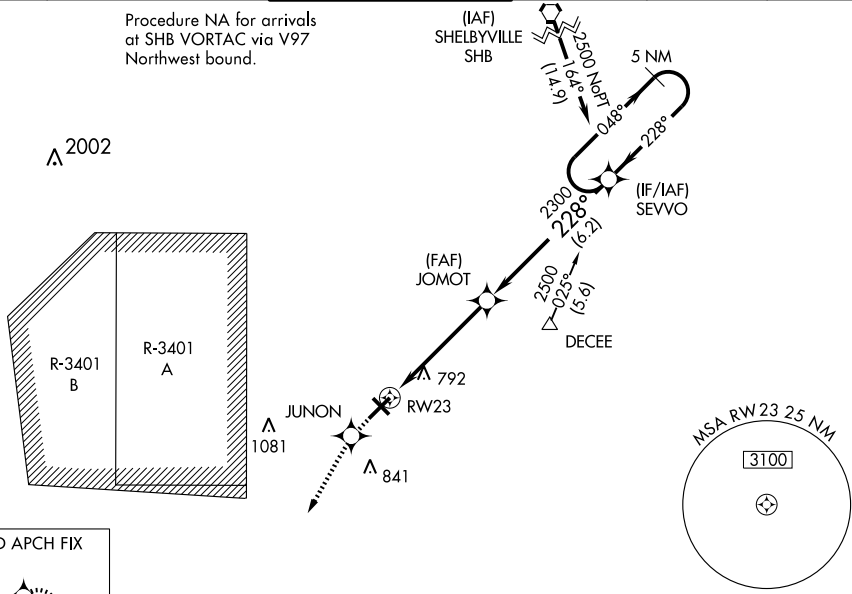
WAAS CH <b>90399</b> <b>W23A</b>	APP CRS <b>228°</b>	Rwy Ldg TDZE <b>6400</b> 656 Apt Elev <b>656</b>
--	------------------------	---

**⚠** If local altimeter setting not received, use Indianapolis Intl altimeter setting and increase all DAs/MDAs 100 feet.  
**VDP NA** when using Indianapolis Intl altimeter setting.  
 For inoperative MALSR, increase LPV all Cats visibility to ¾ and LNAV Cat D visibility to 1¼. DME/DME RNP-0.3 NA.

**MALSR**  
  
**MISSED APPROACH:** Climb to 2500 direct JUNON and via 213° track to NASYI and hold.

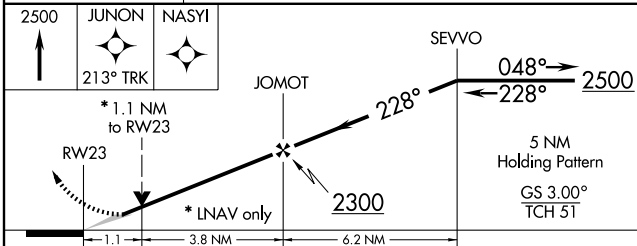
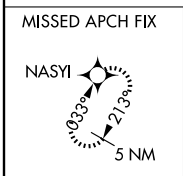
AWOS-3 <b>119.75</b>	INDIANAPOLIS APP CON <b>134.85 317.8</b>	COLUMBUS TOWER * <b>118.6 (CTAF) 0</b>	GND CON <b>121.6</b>	CLNC DEL <b>134.85</b>	UNICOM <b>122.95</b>
-------------------------	---	---	-------------------------	---------------------------	-------------------------

Procedure NA for arrivals at SHB VORTAC via V97 Northwest bound.



EC-2, 22 OCT 2009 to 19 NOV 2009

EC-2, 22 OCT 2009 to 19 NOV 2009



CATEGORY	A	B	C	D
LPV DA	906-½ 250 (300-½)			
LNAV/VNAV DA	NA			
LNAV MDA	1060-½ 404 (500-½)	1060-¾ 404 (500-¾)	1060-1 404 (500-1)	1060-1 404 (500-1)
CIRCLING	1060-1 404 (500-1)	1120-1 464 (500-1)	1140-1½ 484 (500-1½)	1220-2 564 (600-2)

