

# ILS RWY 23

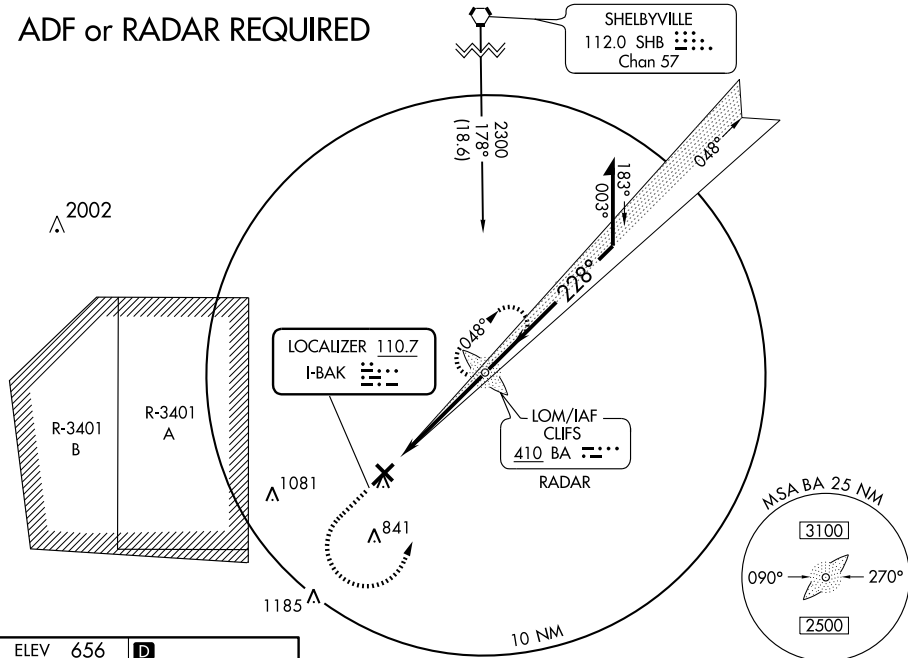
COLUMBUS MUNI (BAK)

LOC I-BAK <b>110.7</b>	APP CRS <b>228°</b>	Rwy Idg TDZE Apt Elev	<b>6400</b> <b>656</b> <b>656</b>
---------------------------	------------------------	-----------------------------	---

When local altimeter not received, use Indianapolis Intl altimeter setting.	MALSR 	MISSED APPROACH: Climb to 1500, then climbing left turn to 2300 direct BA LOM and hold.			
	AWOS-3 <b>119.75</b>	INDIANAPOLIS APP CON <b>134.85 317.8</b>	COLUMBUS TOWER ★ <b>118.6 (CTAF)</b>	GND CON <b>121.6</b>	CLNC DEL <b>134.85</b>

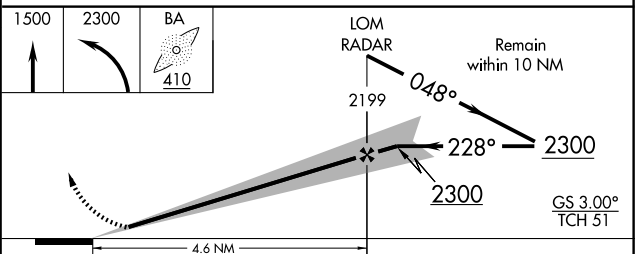
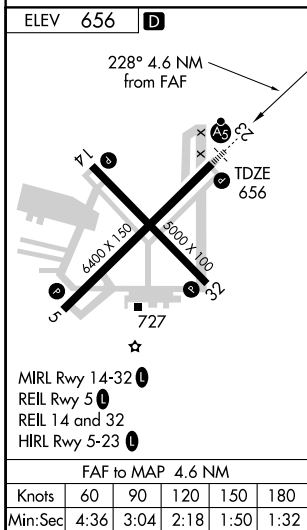
AWOS-3 <b>119.75</b>	INDIANAPOLIS APP CON <b>134.85 317.8</b>	COLUMBUS TOWER ★ <b>118.6 (CTAF)</b>	GND CON <b>121.6</b>	CLNC DEL <b>134.85</b>	UNICOM <b>122.95</b>
-------------------------	---	---	-------------------------	---------------------------	-------------------------

## ADF or RADAR REQUIRED



EC-2, 22 OCT 2009 to 19 NOV 2009

EC-2, 22 OCT 2009 to 19 NOV 2009



CATEGORY	A	B	C	D
S-ILS 23	856-½ 200 (200-½)			
S-LOC 23	1060-½	404 (500-½)	1060-¾	404 (500-¾)
CIRCLING	1080-1	1120-1	1140-1½	1220-2
	424 (500-1)	464 (500-1)	484 (500-1½)	564 (600-2)
INDIANAPOLIS INTL ALTIMETER SETTING MINIMUMS				
S-ILS 23	951-½ 295 (300-½)			
S-LOC 23	1160-½	504 (600-½)	1160-1	504 (600-1)
CIRCLING	1180-1	1200-1	1240-1½	1240-2
	524 (600-1)	544 (600-1)	584 (600-1½)	584 (600-2)