


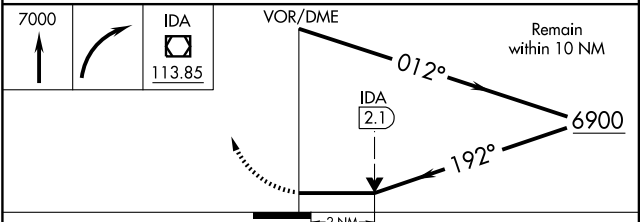
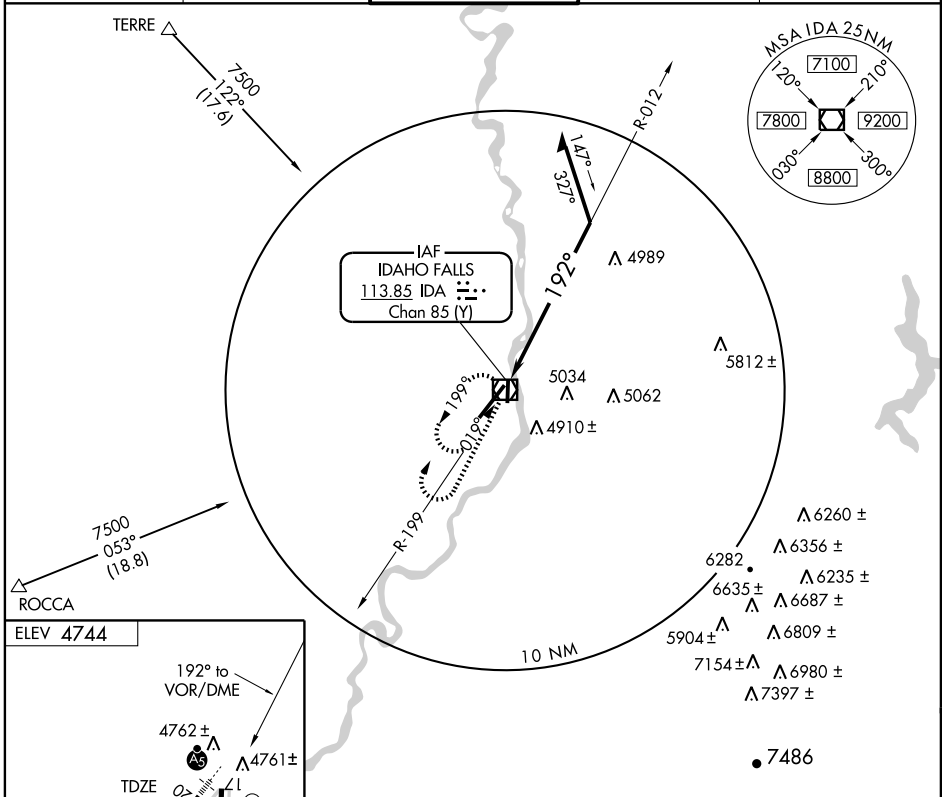
VOR RWY 20
IDAHO FALLS RGNL (IDA)

VOR/DME IDA 113.85 Chan 85 (Y)	APP CRS 192°	Rwy Idg TDZE 4735 Apt Elev 4744
---	------------------------	---

⚠ When local altimeter setting not received, use Rexburg-Madison County altimeter setting and increase all MDA 80 feet and increase all Cat B visibilities ¼ mile and increase all Cat C and D visibilities ½ mile. When VGSI inoperative, circling Rwy 35 NA at night. VDP NA when using Rexburg-Madison County altimeter setting.

MALSR
 MISSED APPROACH: Climb to 7000 then right turn direct IDA VOR/DME and hold.

ATIS 135.325	SALT LAKE CENTER 128.35 239.25	IDAHO FALLS TOWER* 118.5 (CTAF) 0 257.8	GND CON 121.7	UNICOM 122.95
------------------------	--	---	-------------------------	-------------------------



CATEGORY	A	B	C	D
S-20	5400/24	665 (700-½)	5400/60 665 (700-1¼)	5400-1½ 665 (700-1½)
CIRCLING	5400-1	656 (700-1)	5400-1¾ 656 (700-1¾)	5400-2 656 (700-2)

NW-1, 22 OCT 2009 to 19 NOV 2009

NW-1, 22 OCT 2009 to 19 NOV 2009