


RNAV (GPS) RWY 20

IDAHO FALLS RGNL (IDA)

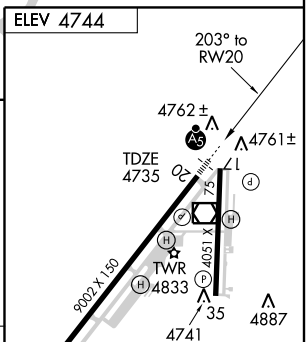
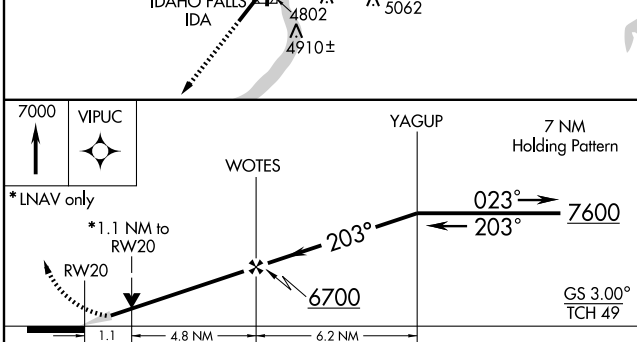
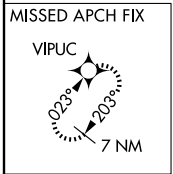
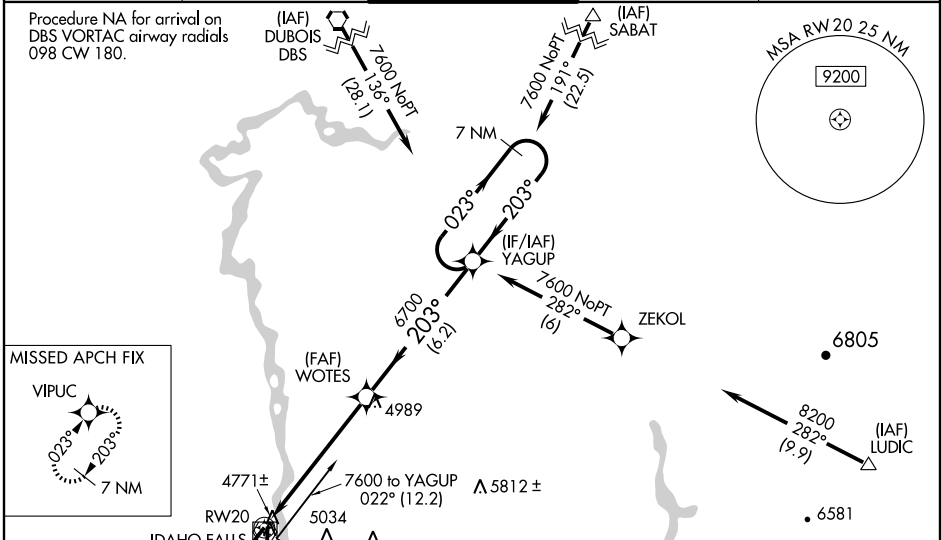
WAAS CH 40111 W20A	APP CRS 203°	Rwy Idg TDZE 4735 Apt Elev 4744	9002
--	------------------------	---	-------------

▼ For uncompensated Baro-VNAV systems, LNAV/VNAV NA below -24°C (-11°F) or above 39°C (102°F). DME/DME RNP-0.3 NA.
▲ VDP and Baro-VNAV NA when using Rexburg-Madison County altimeter setting. When local altimeter setting not received, use Rexburg-Madison County altimeter setting and increase all DA 68 feet and all MDA 80 feet and increase LNAV/VNAV visibility all Cats ¼ mile. When VGSi inoperative, circling Rwy 35 NA at night. For inoperative MALSR increase visibility LNAV Cat D to 1 ¼ mile. For inoperative MALSR when using Rexburg-Madison County altimeter setting increase LPV visibility all Cats to 1 mile.

MALSR


MISSED APPROACH: Climb to 7000 direct VIPUC and hold.

ATIS 135.325	SALT LAKE CENTER 128.35 239.25	IDAHO FALLS TOWER * 118.5 (CTAF) 257.8	GND CON 121.7	UNICOM 122.95
------------------------	--	---	-------------------------	-------------------------



CATEGORY	A	B	C	D
LPV DA	4985/24		250 (300-½)	
LNAV/VNAV DA	5092/40		357 (400-¾)	
LNAV MDA	5140/24	405 (400-½)	5140/40	5140/50
			405 (400-¾)	405 (400-1)
CIRCLING	5200-1	5220-1	5260-1½	5340-2
	456 (500-1)	476 (500-1)	516 (600-1½)	596 (600-2)

REIL Rwy 2 ●
 HIRL Rwy 2-20 ●
 MIRL Rwy 17-35

NW-1, 22 OCT 2009 to 19 NOV 2009

NW-1, 22 OCT 2009 to 19 NOV 2009