

IDAHO FALLS, IDAHO

AL-590 (FAA)

RNAV (GPS) RWY 2

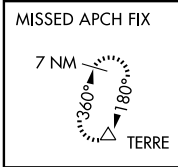
IDAHO FALLS RGNL (IDA)

WAAS CH 97501 W02A	APP CRS 023°	Rwy ldg 9002 TDZE 4744 Apt Elev 4744
----------------------------------------	------------------------	-----------------------------------------------------------------

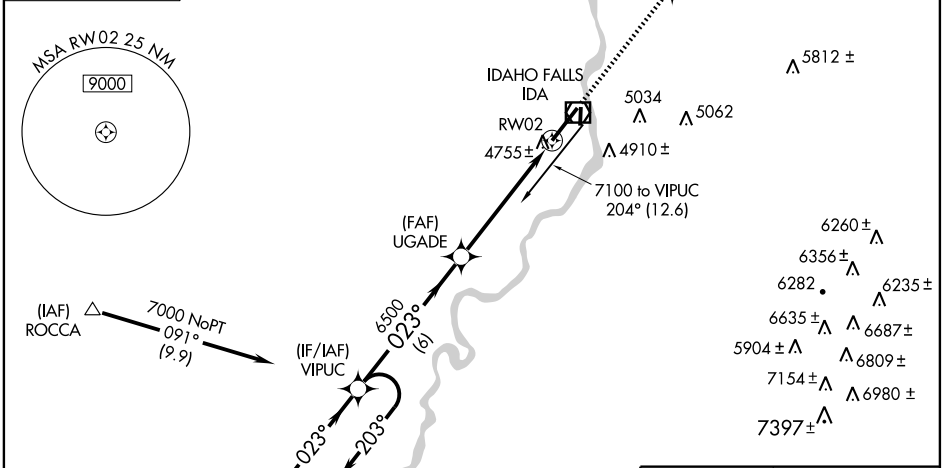
▼ DME/DME RNP-0.3 NA.
For uncompensated Baro-VNAV systems, LNAV/VNAV NA below -24°C (-11°F) or above 39°C (103°F).
When VGSi inoperative, circling Rwy 35 NA at night.

MISSED APPROACH: Climb to 7500 direct TOCYU and left turn via 284° track to TERRE and hold.

ATIS 135.325	SALT LAKE CENTER 128.35 239.25	IDAHO FALLS TOWER ★ 118.5 (CTAF) 257.8	GND CON 121.7	UNICOM 122.95
------------------------	------------------------------------------	---------------------------------------------------------	-------------------------	-------------------------

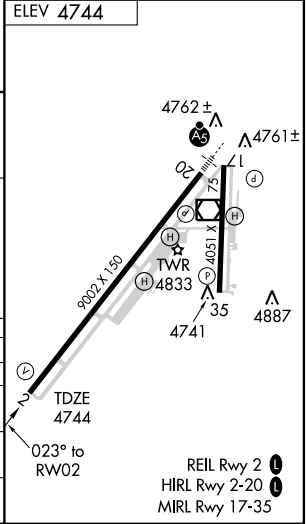
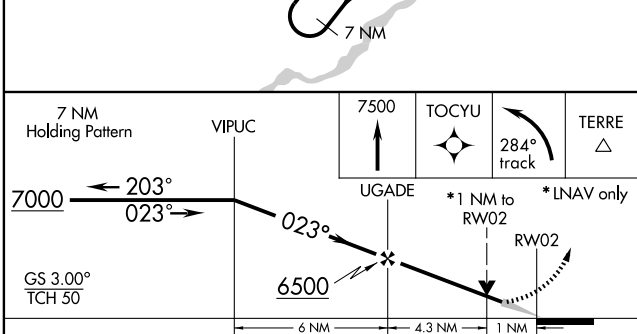


Procedure NA for arrivals at IDA VOR/DME via V21 north bound.



NW-1, 22 OCT 2009 to 19 NOV 2009

NW-1, 22 OCT 2009 to 19 NOV 2009



CATEGORY	A	B	C	D
LPV DA		4994-¾	250 (300-¾)	
LNAV/VNAV DA		5135-1¼	391 (400-1¼)	
LNAV MDA	5100-1	356 (400-1)		5100-1¼ 356 (400-1¼)
CIRCLING	5200-1 456 (500-1)	5220-1 476 (500-1)	5260-1½ 516 (600-1½)	5340-2 596 (600-2)

IDAHO FALLS, IDAHO
Orig-A 09239

43°31'N-112°04'W

RNAV (GPS) RWY 2

IDAHO FALLS RGNL (IDA)