

IDAHO FALLS, IDAHO

AL-590 (FAA)

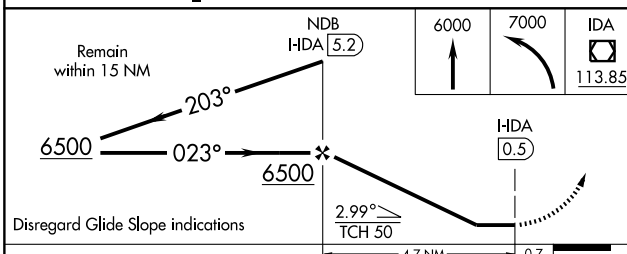
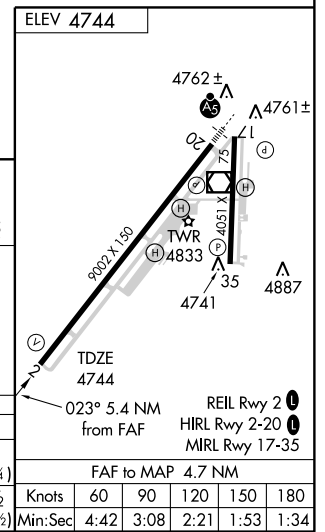
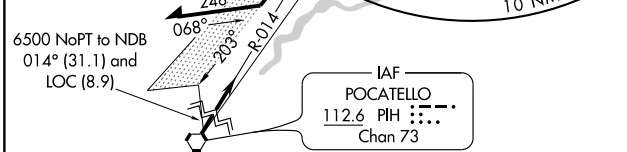
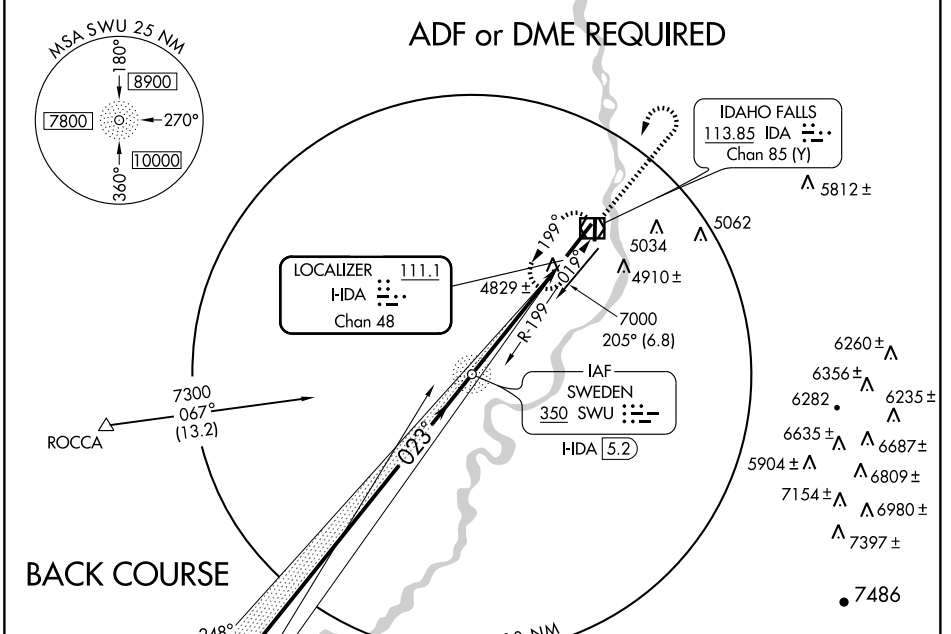
LOC/DME I-HDA <b>111.1</b> Chan 48	APP CRS <b>023°</b>	Rwy Idg TDZE Apt Elev	<b>9002</b> <b>4744</b> <b>4744</b>
------------------------------------------	------------------------	-----------------------------	-------------------------------------------

**LOC BC RWY 2**  
IDAHO FALLS RGNL (IDA)

**MISSED APPROACH:** Climb to 6000 then climbing left turn to 7000 direct IDA VOR/DME and hold.

ATIS <b>135.325</b>	SALT LAKE CENTER <b>128.35 239.25</b>	IDAHO FALLS TOWER ★ <b>118.5 (CTAF) 257.8</b>	GND CON <b>121.7</b>	UNICOM <b>122.95</b>
------------------------	------------------------------------------	--------------------------------------------------	-------------------------	-------------------------

**ADF or DME REQUIRED**



CATEGORY	A	B	C	D	E
S-LOC 2	5080-1 336 (400-1)				5080-1 1/4 336 (400-1 1/4)
CIRCLING	5200-1 456 (500-1)	5220-1 476 (500-1)	5260-1 1/2 516 (600-1 1/2)	5340-2 596 (600-2)	5420-2 1/2 676 (700-2 1/2)

Knots	60	90	120	150	180
Min:Sec	4:42	3:08	2:21	1:53	1:34

IDAHO FALLS, IDAHO  
Amdt 6B 09239

43°31'N-112°04'W

IDAHO FALLS RGNL (IDA)  
**LOC BC RWY 2**

NW-1, 22 OCT 2009 to 19 NOV 2009

NW-1, 22 OCT 2009 to 19 NOV 2009