

RNAV (GPS) RWY 17

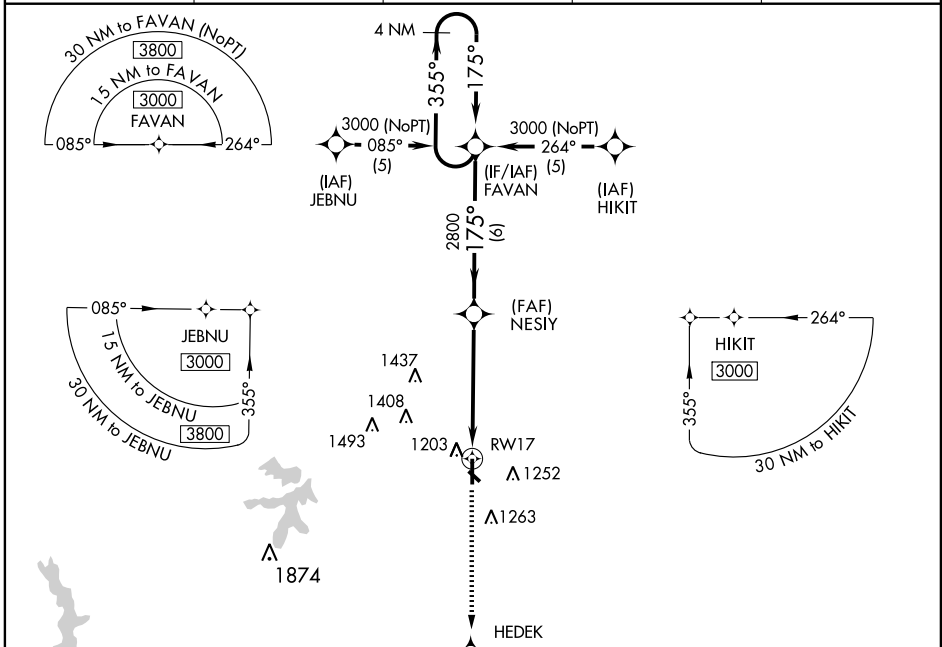
SHAWNEE RGNL (SNL)

APP CRS 175°	Rwy Idg 5600
	TDZE 1073
	Apt Elev 1073

NA If local altimeter setting not received, use Chandler Rgnl altimeter setting and increase all DA/MDAs 80 feet. Baro-VNAV NA below -17C (+2F); BARO-VNAV NA when using Chandler Rgnl altimeter setting. VDP NA when using Chandler Rgnl altimeter setting. GPS or RNP-0.3 REQUIRED. DME/DME RNP-0.3 NA.

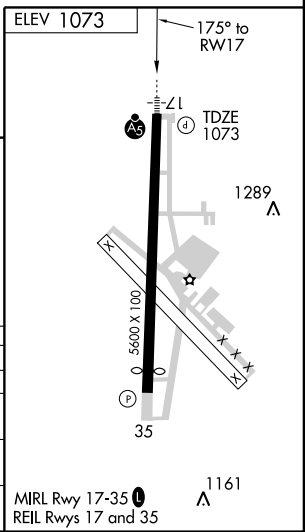
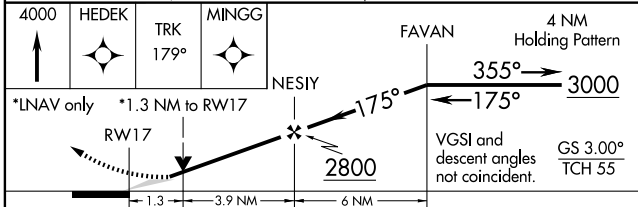
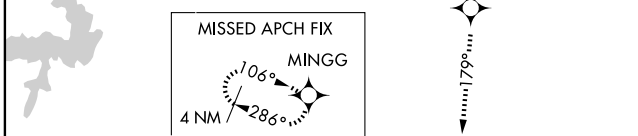
MALSR MISSED APPROACH: Climb to 4000 direct HEDEK and via 179° Track to MINGG and hold.

AWOS-3 118.275	OKE CITY APP CON 120.45 288.325	FORT WORTH CENTER 132.2 338.35	GCO 121.725	UNICOM 122.7 (CTAF)
--------------------------	---	--	-----------------------	-------------------------------



SC-1, 22 OCT 2009 to 19 NOV 2009

SC-1, 22 OCT 2009 to 19 NOV 2009



CATEGORY	A	B	C	D
GLS PA DA	NA			
LNAV/VNAV DA	1440- ³ / ₄		367 (400- ³ / ₄)	
LNAV MDA	1540- ¹ / ₂		467 (500- ¹ / ₂)	
CIRCLING	1600-1 ¹ / ₄		527 (600-1 ¹ / ₄)	