

WILMINGTON, OHIO

AL-583 (FAA)

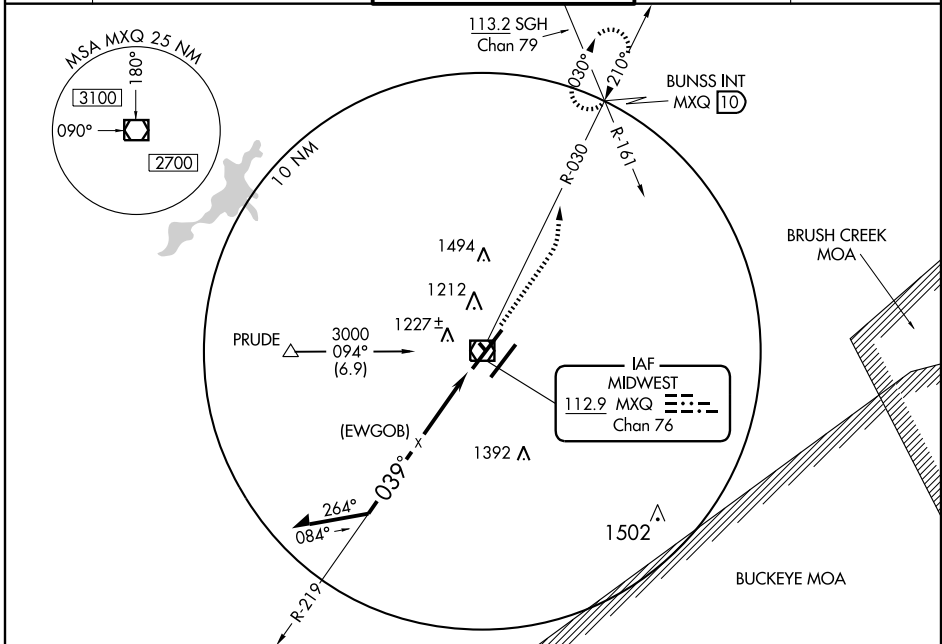
VOR/DME MXQ 112.9 Chan 76	APP CRS 039°	Rwy Idg 10700 TDZE 1057 Apt Elev 1077
---	------------------------	--

VOR or GPS RWY 4L

WILMINGTON/AIRBORNE AIRPARK (ILN)

<p>▽ Obtain local altimeter setting on CTAF; when not received, use Dayton Intl altimeter setting. Obtain HIRL Rwy 4L-22R, MALSR Rwy 4L and ALSF-2 Rwy 22R on CTAF.</p>	<p>MALSR</p>	<p>MISSED APPROACH: Climb to 2500, then climbing left turn to 4000 via MXQ R-030 to BUNSS Int/MXQ 10 DME and hold.</p>
--	---------------------	---

ATIS 124.925	DAYTON APP CON 126.5 327.1	WILMINGTON TOWER ★ 119.475 (CTAF)	GND CON 121.6	CLNC DEL 125.6
------------------------	--------------------------------------	---	-------------------------	--------------------------



EC-2, 22 OCT 2009 to 19 NOV 2009

EC-2, 22 OCT 2009 to 19 NOV 2009

<p>Remain within 10 NM</p>	<p>2500</p> <p>4000</p> <p>BUNSS INT</p> <p>MXQ R-030 112.9</p>		ELEV 1077	D
CATEGORY	A	B	C	D
S-4L	1520/24	463 (500-½)	1520/40 463 (500-¾)	1520/60 463 (500-1¼)
CIRCLING	1640-1	563 (600-1)	1640-1½ 563 (600-1½)	1680-2 603 (700-2)
DAYTON INTL ALTIMETER SETTING MINIMUMS				
S-4L	1620-½	563 (600-½)	1620-1 563 (600-1)	1620-1¼ 563 (600-1¼)
CIRCLING	1740-1	663 (700-1)	1740-1¾ 663 (700-1¾)	1780-2¼ 703 (800-2¼)

TDZ/CL Rws 22L and 22R
HIRL Rws 4R-22L and 4L-22R

WILMINGTON, OHIO
Amdt 5D 09295

39°26'N - 83°48'W

WILMINGTON/AIRBORNE AIRPARK (ILN) VOR or GPS RWY 4L