

WILMINGTON, OHIO

AL-583 (FAA)

VOR/DME MXQ <b>112.9</b> Chan <b>76</b>	APP CRS <b>225°</b>	Rwy Idg <b>10700</b> TDZE <b>1077</b> Apt Elev <b>1077</b>
---	------------------------	--

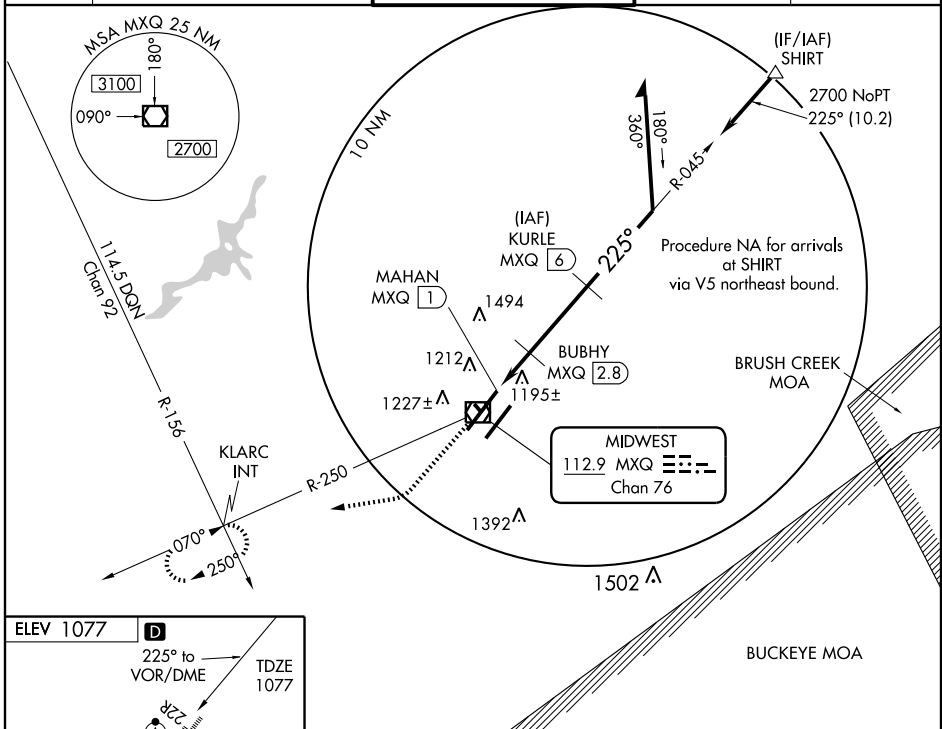
# VOR/DME RWY 22R

WILMINGTON/AIRBORNE AIRPARK (ILN)

**▼** For inoperative ALSF-2, increase S-22R Cat D visibility to RVR 6000.  
**▲** When local altimeter setting not received, use James M. Cox Dayton Intl altimeter setting and increase all MDA 100 feet. Increase S-22R Cat C and Circling Cat C/D visibility 1/4 mile. VDP NA when using James M. Cox Dayton Intl altimeter setting.

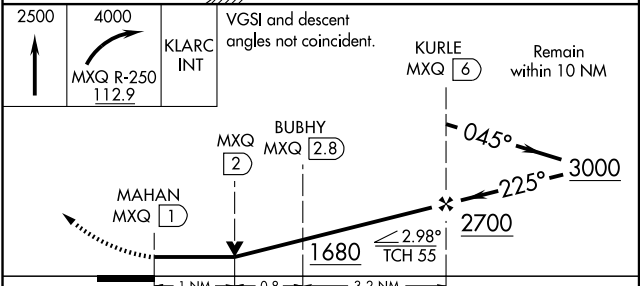
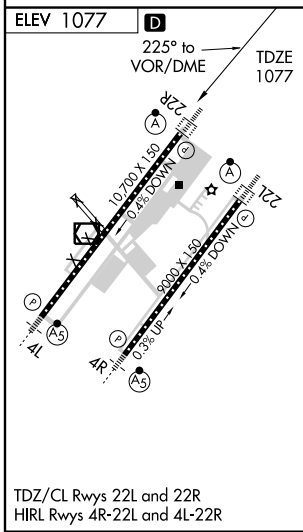
ALSF-2 MISSED APPROACH: Climb to 2500 then climbing right turn to 4000 via MXQ VOR/DME R-250 to KLARC INT and hold.

ATIS <b>124.925</b>	DAYTON APP CON <b>126.5 327.1</b>	WILMINGTON TOWER * <b>119.475 (CTAF)</b>	GND CON <b>121.6</b>	CLNC DEL <b>125.6</b>
------------------------	--------------------------------------	---	-------------------------	--------------------------



EC-2, 22 OCT 2009 to 19 NOV 2009

EC-2, 22 OCT 2009 to 19 NOV 2009



CATEGORY	A	B	C	D
S-22R	1460/24 383 (400-1/2)			1460/50 383 (400-1)
CIRCLING	1640-1	563 (600-1)	1640-1 1/2 563 (600-1 1/2)	1680-2 603 (700-2)

WILMINGTON, OHIO  
Amdt 5 09295

39°26'N - 83°48'W

# WILMINGTON/AIRBORNE AIRPARK (ILN) VOR/DME RWY 22R