

RNAV (GPS) RWY 4L

WILMINGTON/ AIRBORNE AIRPARK (ILN)

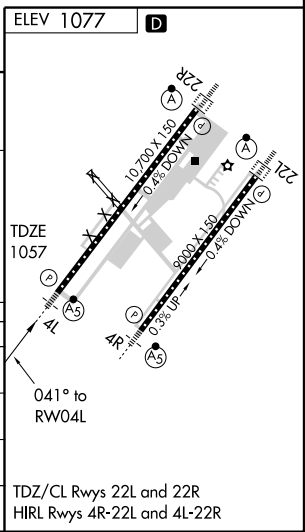
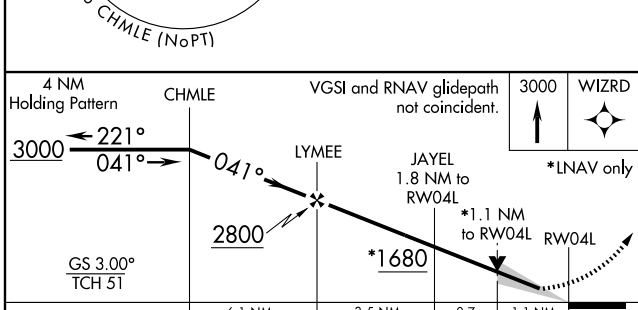
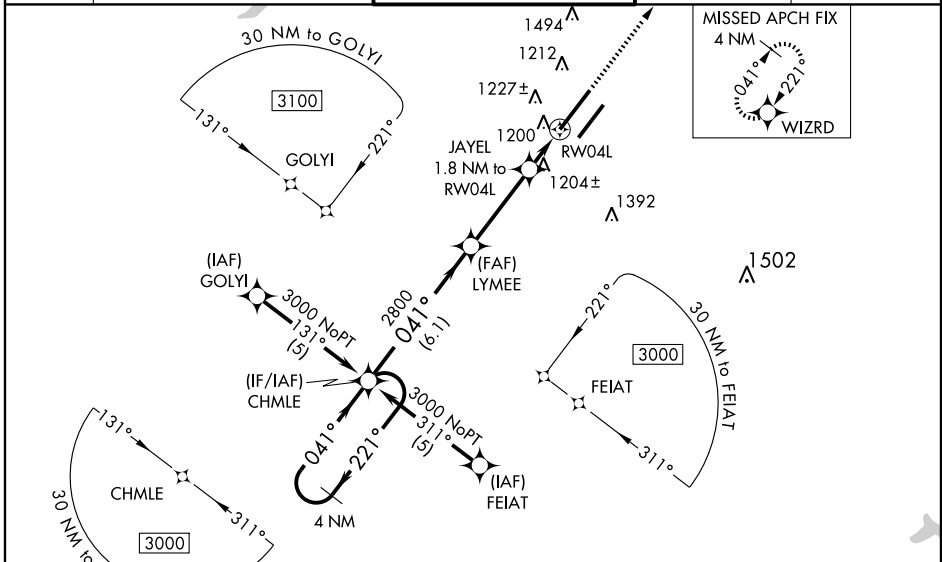
WAAS CH 62914 W04A	APP CRS 041°	Rwy Idg 10700 TDZE 1057 Apt Elev 1077
--	------------------------	--

▼ For inoperative MALSRL when using James M. Cox Dayton Intl altimeter setting, increase LPV visibility to RVR 5000 all Cats. For inoperative MALSRL, increase LNAV Cat D visibility to RVR 6000. For uncompensated Baro-VNAV systems, LNAV/VNAV NA below -17°C (2°F) or above 46°C (114°F). DME/DME RNP-0.3 NA. When local altimeter not received, use James M. Cox Dayton Intl altimeter setting and increase all DA 90 feet and all MDA 100 feet. Increase LNAV/VNAV all Cats visibility ½ mile, LNAV Cat C and Circling Cat C/D visibility ¼ mile. VDP and Baro-VNAV NA when using James M. Cox Dayton Intl altimeter setting.

MALSRL

MISSED APPROACH:
Climb to 3000 direct WIZRD and hold.

ATIS 124.925	DAYTON APP CON 126.5 327.1	WILMINGTON TOWER * 119.475 (CTAF)	GND CON 121.6	CLNC DEL 125.6
------------------------	--------------------------------------	---	-------------------------	--------------------------



CATEGORY	A	B	C	D
LPV DA	1257/24		200 (200-½)	
LNAV/VNAV DA	1505/50		448 (500-1)	
LNAV MDA	1460/24	403 (400-½)	1460/40 403 (400-¾)	1460/50 403 (400-1)
CIRCLING	1640-1	563 (600-1)	1640-1½ 563 (600-1½)	1680-2 603 (700-2)

RNAV (GPS) RWY 4L

EC-2, 22 OCT 2009 to 19 NOV 2009

EC-2, 22 OCT 2009 to 19 NOV 2009