

WILMINGTON, OHIO

AL-583 (FAA)

# NDB RWY 4L

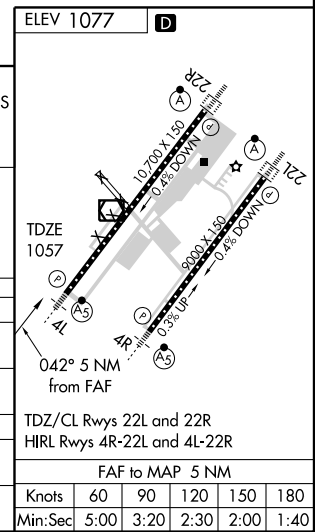
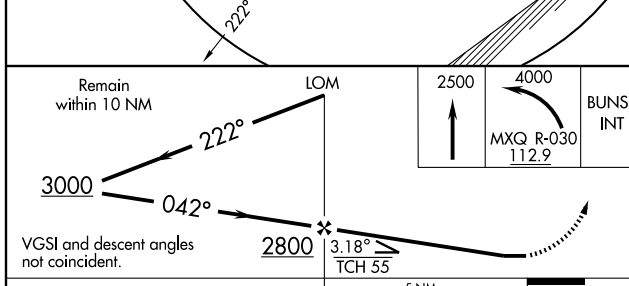
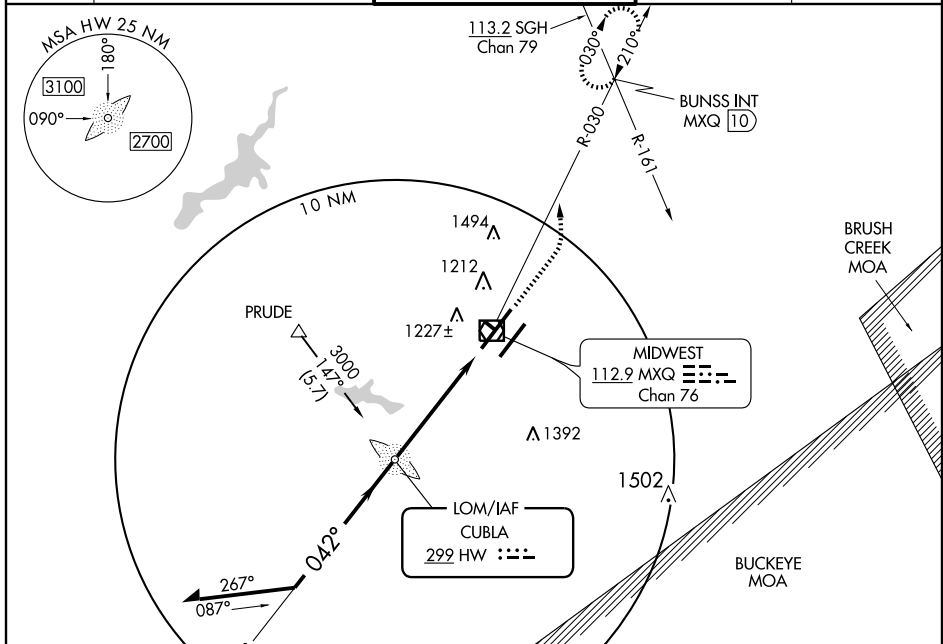
WILMINGTON/AIRBORNE AIRPARK (ILN)

LOM HW <b>299</b>	APP CRS <b>042°</b>	Rwy Idg <b>10700</b> TDZE <b>1057</b> Apt Elev <b>1077</b>
----------------------	------------------------	--

**NA** Obtain local climeter setting on CTAF; when not received, use Dayton Intl altimeter setting. Obtain HIRL Rwy 4L-22R, MALS Rwy 4L and ALSF-2 Rwy 22R on CTAF.

**MALS R** MISSED APPROACH: Climb to 2500 then climbing left turn to 4000 via MXQ R-030 to BUNSS Int/10 DME and hold.

ATIS <b>124.925</b>	DAYTON APP CON <b>126.5 327.1</b>	WILMINGTON TOWER ★ <b>119.475 (CTAF)</b>	GND CON <b>121.6</b>	CLNC DEL <b>125.6</b>
------------------------	--------------------------------------	---	-------------------------	--------------------------



CATEGORY	A	B	C	D
S-4L	1520/40 463 (500-¾)		1520/60 463 (500-1¼)	
CIRCLING	1640-1	563 (600-1)	1640-1½ 563 (600-1½)	1680-2 603 (700-2)
DAYTON INTL ALTIMETER SETTING MINIMUMS				
S-4L	1600-¾	543 (600-¾)	1600-1 543 (600-1)	1600-1½ 543 (600-1½)
CIRCLING	1740-1	663 (700-1)	1740-1¾ 663 (700-1¾)	1780-2¼ 703 (800-2¼)

WILMINGTON, OHIO  
Amdt 2E 09295

39°26'N - 83°48'W

WILMINGTON/AIRBORNE AIRPARK (ILN)  
**NDB RWY 4L**

EC-2, 22 OCT 2009 to 19 NOV 2009

EC-2, 22 OCT 2009 to 19 NOV 2009