

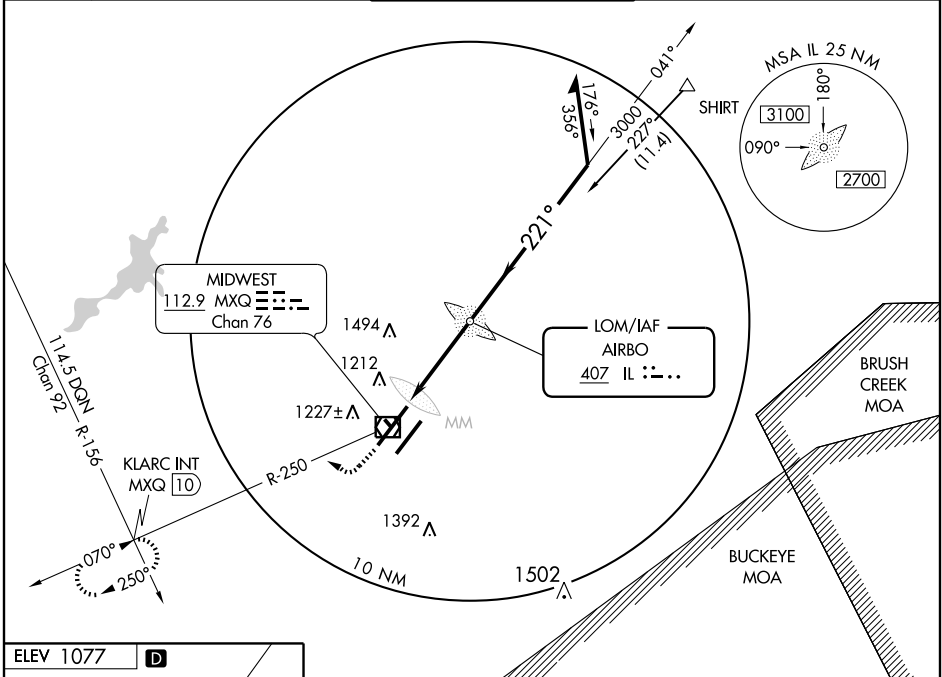
NDB RWY 22R

WILMINGTON/AIRBORNE AIRPARK (ILN)

LOM IL 407	APP CRS 221°	Rwy ldg 10700
		TDZE 1077
		Apt Elev 1077

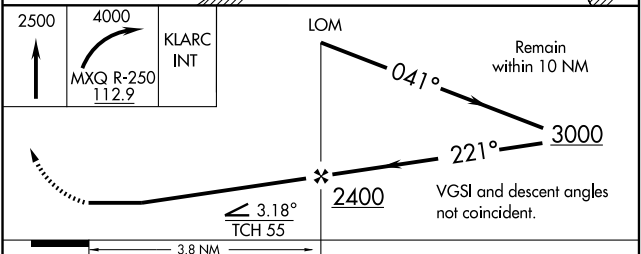
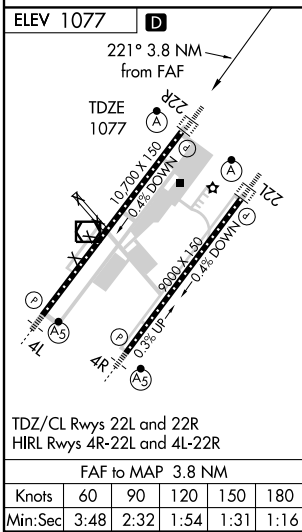
<p>NA Obtain local altimeter setting on CTAF; when not received, use Dayton Intl altimeter setting. Obtain HIRL Rwy 4L-22R, MALSR Rwy 4L and ALSF-2 Rwy 22R on CTAF.</p>	<p>ALSF-2 </p>	<p>MISSED APPROACH: Climb to 2500 then climbing right turn to 4000 via MXQ R-250 to KLARC Int/MXQ 10 DME and hold.</p>
---	-----------------------	---

ATIS 124.925	DAYTON APP CON 126.5 327.1	WILMINGTON TOWER * 119.475 (CTAF)	GND CON 121.6	CLNC DEL 125.6
------------------------	--------------------------------------	---	-------------------------	--------------------------



EC-2, 22 OCT 2009 to 19 NOV 2009

EC-2, 22 OCT 2009 to 19 NOV 2009



CATEGORY	A	B	C	D
S-22R	1580/40	503 (600-¾)	1580/50 503 (600-1)	1580/60 503 (600-1¼)
CIRCLING	1640-1	563 (600-1)	1640-1½ 563 (600-1½)	1680-2 603 (700-2)
DAYTON INTL ALTIMETER SETTING MINIMUMS				
S-22R	1660-¾	583 (600-¾)	1660-1 583 (600-1)	1660-1½ 583 (600-1½)
CIRCLING	1740-1	663 (700-1)	1740-1¾ 663 (700-1¾)	1780-2¼ 703 (800-2¼)