


LOC/DME I-YV <b>109.35</b> Chan 30 (Y)	APP CRS <b>041°</b>	Rwy Idg <b>9000</b> TDZE <b>1046</b> Apt Elev <b>1077</b>
--	------------------------	---

**ILS or LOC RWY 4R**  
WILMINGTON/AIRBORNE AIRPARK (ILN)

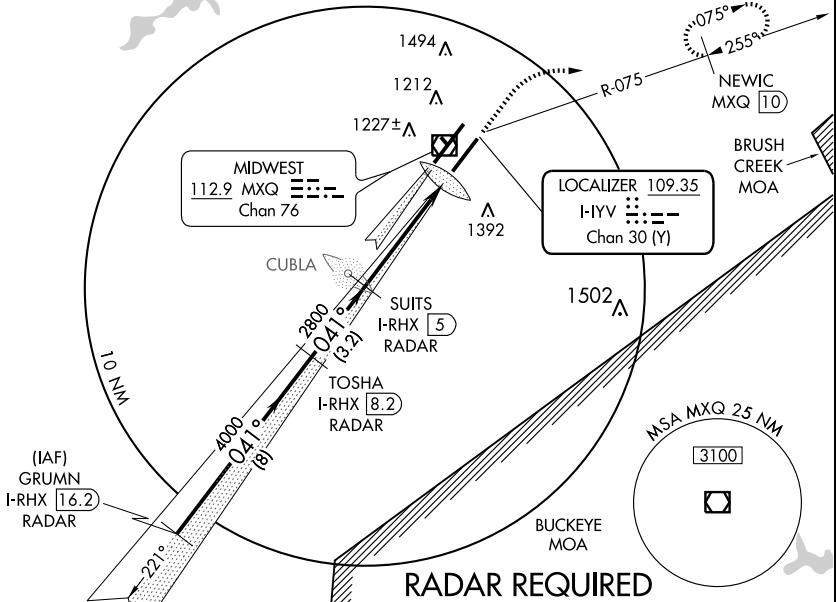
**⚠** Obtain local altimeter setting on CTAF; when not received, use Dayton Intl altimeter setting. Obtain approach lights and rwy lights on CTAF. Simultaneous approach authorized with Rwy 4L. **\*\* RVR 1800 authorized with the use of FD or AP or HUD to DA.**

**MALSR** 

**MISSED APPROACH:** Climb to 1700, then climbing right turn to 4000 via MXQ R-075 to NEWIC/MXQ 10 DME and hold.

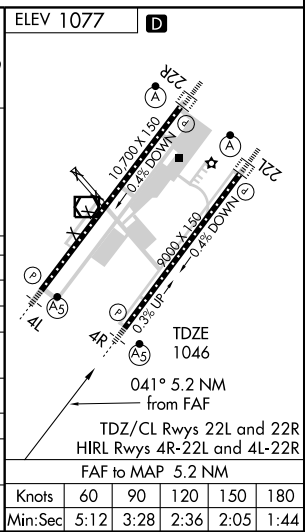
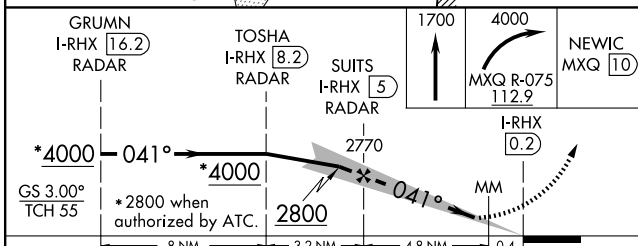
ATIS <b>124.925</b>	DAYTON APP CON <b>126.5 327.1</b>	WILMINGTON TOWER * <b>119.475 (CTAF)</b>	GND CON <b>121.6</b>	CLNC DEL <b>125.6</b>
------------------------	--------------------------------------	---	-------------------------	--------------------------

DME Ident is I-RHX.



EC-2, 22 OCT 2009 to 19 NOV 2009

EC-2, 22 OCT 2009 to 19 NOV 2009



CATEGORY	A	B	C	D
S-ILS 4R	<b>** 1246/24 200 (200-½)</b>			
S-LOC 4R	1460/24	414 (400-½)	1460/40	414 (400-¾)
CIRCLING	1640-1	563 (600-1)	1640-1½	1680-2 603 (700-2)
DAYTON INTL ALTIMETER SETTING MINIMUMS				
S-ILS 4R	1336-½ 290 (300-½)			
S-LOC 4R	1560-½	514 (500-½)	1560-1 514 (500-1)	1560-1¼ 514 (500-1¼)
CIRCLING	1740-1	663 (700-1)	1740-1¾ 663 (700-1¾)	1780-2¼ 703 (800-2¼)

ELEV 1077	<b>D</b>
Knots	60 90 120 150 180
Min:Sec	5:12 3:28 2:36 2:05 1:44