

ILS or LOC RWY 22R

WILMINGTON/AIRBORNE AIRPARK (ILN)

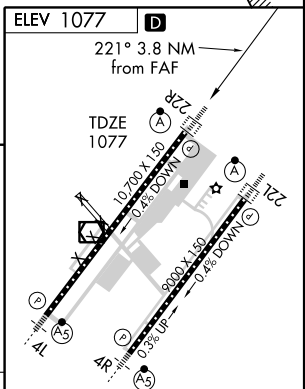
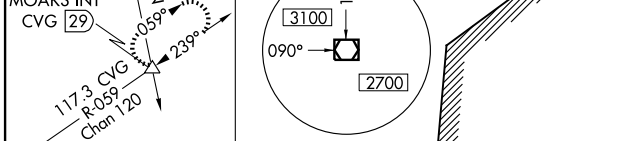
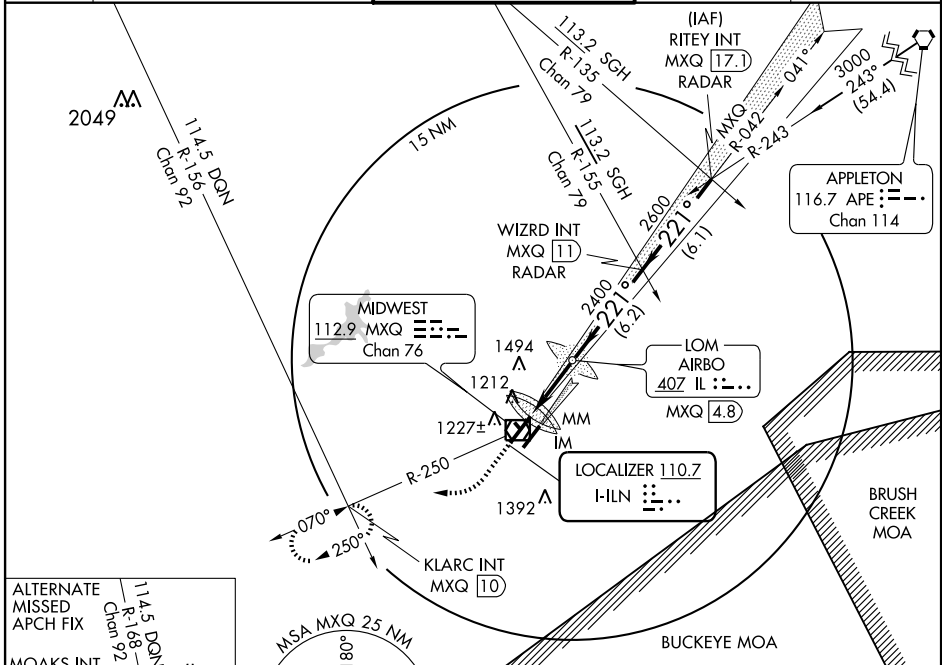
LOC I-ILN 110.7	APP CRS 221°	Rwy Idg 10700
	TDZE 1077	
	Apt Elev 1077	

Simultaneous approaches authorized with ILS RWY 22L.
DME from MXQ VOR/DME

ALSF-2

MISSED APPROACH: Climb to 1500, then climbing right turn to 4000 via MXQ R-250 to KLARC Int/MXQ 10 DME and hold.

ATIS 124.925	DAYTON APP CON 126.5 327.1	WILMINGTON TOWER ★ 119.475 (CTAF)	GND CON 121.6	CLNC DEL 125.6
------------------------	--------------------------------------	---	-------------------------	--------------------------



1500	4000	KLARC INT MXQ 10	LOM MXQ 4.8	WIZRD INT MXQ 11 RADAR		
↑	↻		2343	2600		
			2400	Procedure Turn NA		
				GS 3.00%		
				TCH 55		
				VGSi and ILS glidepath not coincident.		
CATEGORY	A	B	C	D		
S-ILS 22R		1277/18	200 (200-½)			
S-LOC 22R		1400/24	323 (400-½)	1400/40 323 (400-¾)		
CIRCLING	1640-1	563 (600-1)	1640-1½ 563 (600-1½)	1640-2 563 (600-2)		
	TDZ/CL Rwy 22L and 22R HIRL Rwy 4R-22L and 4L-22R					
	FAF to MAP 3.8 NM					
	Knots	60	90	120	150	180
	Min:Sec	3:48	2:32	1:54	1:31	1:16

EC-2, 22 OCT 2009 to 19 NOV 2009

EC-2, 22 OCT 2009 to 19 NOV 2009