

ILS RWY 4L

WILMINGTON/ AIRBORNE AIRPARK (ILN)

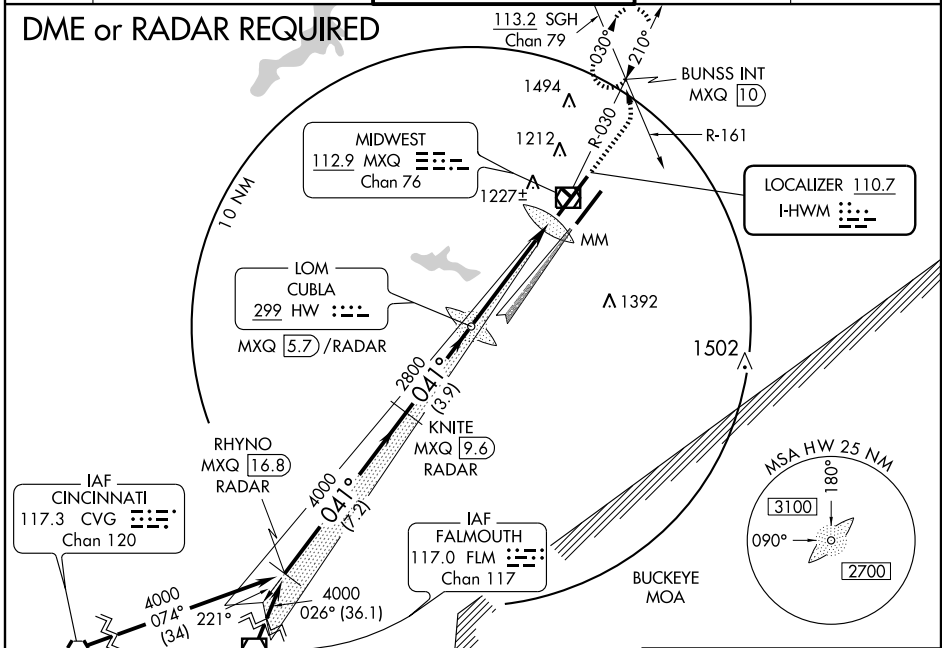
LOC I-HWM 110.7	APP CRS 041°	Rwy Idg 10700
		TDZE 1057
		Apt Elev 1077

⚠ Obtain local altimeter setting on CTAF; when not received, use Dayton Intl altimeter setting. Obtain approach lights and runway lights on CTAF. Simultaneous approaches authorized with Rwy 4R. Use MXQ DME when on LOC course.

MALSRS
 MISSED APPROACH: Climb to 1600 then climbing left turn to 4000 via MXQ R-030 to BUNSS Int/MXQ 10 DME and hold.

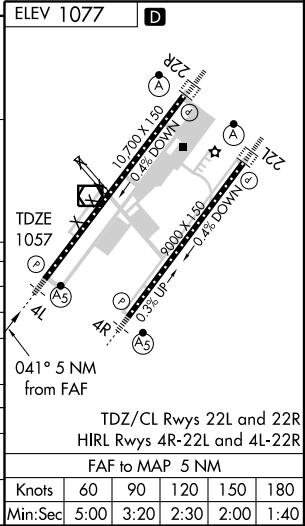
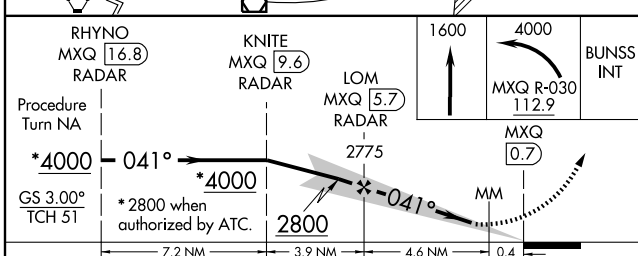
ATIS 124.925	DAYTON APP CON 126.5 327.1	WILMINGTON TOWER ★ 119.475 (CTAF)	GND CON 121.6	CLNC DEL 125.6
------------------------	--------------------------------------	---	-------------------------	--------------------------

DME or RADAR REQUIRED



EC-2, 22 OCT 2009 to 19 NOV 2009

EC-2, 22 OCT 2009 to 19 NOV 2009



Procedure Turn NA	*4000			
GS 3.00° TCH 51	*2800 when authorized by ATC.			
CATEGORY	A	B	C	D
S-ILS 4L	1257/24		200 (200-½)	
S-LOC 4L	1460/24		403 (400-½) 1460/40 403 (400-¾)	
CIRCLING	1640-1 563 (600-1)		1640-1½ 563 (600-1½) 1680-2 603 (700-2)	
DAYTON INTL ALTIMETER SETTING MINIMUMS				
S-ILS 4L	1347-½ 290 (300-½)			
S-LOC 4L	1560-½ 503 (500-½)		1560-1 503 (500-1) 1560-1¼ 503 (500-1¼)	
CIRCLING	1740-1 663 (700-1)		1740-1¾ 663 (700-1¾) 1780-2¼ 703 (800-2¼)	

Knots	60	90	120	150	180
	Min:Sec	5:00	3:20	2:30	2:00