

WILMINGTON, OHIO

AL-583 (FAA)

# ILS RWY 22R (CAT II) WILMINGTON/AIRBORNE AIRPARK (ILN)

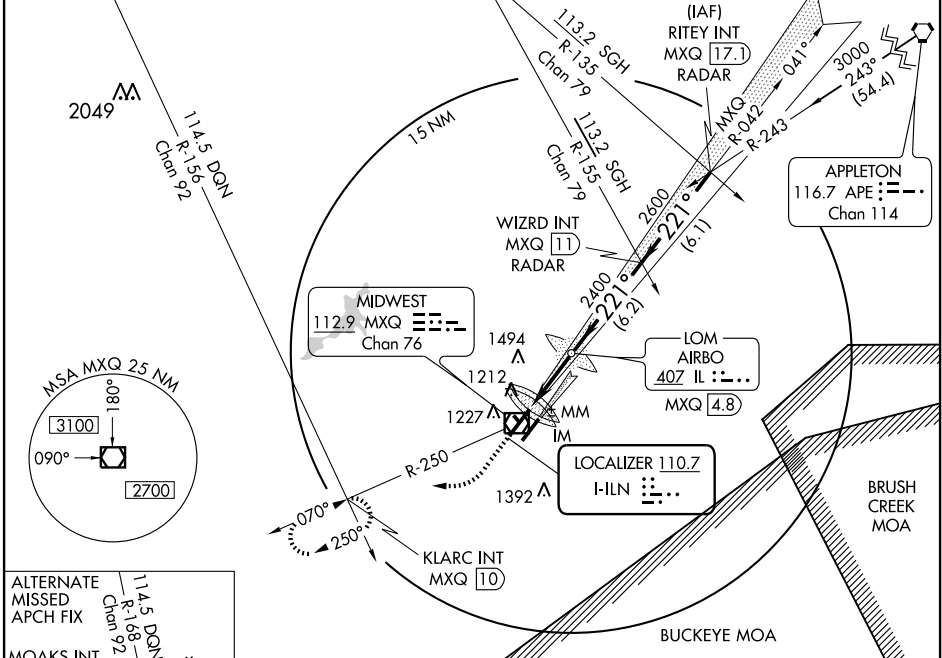
LOC I-ILN <b>110.7</b>	APP CRS <b>221°</b>	Rwy Idg <b>10700</b>
	TDZE <b>1077</b>	
	Apt Elev <b>1077</b>	

Simultaneous approaches authorized with ILS RWY 22L.  
DME from MXQ VOR/DME

ALSF-2

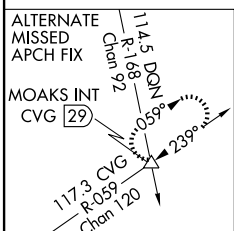
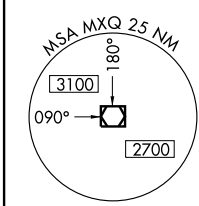
MISSED APPROACH: Climb to 1500, then climbing right turn to 4000 via MXQ R-250 to KLARC Int/MXQ 10 DME and hold.

ATIS <b>124.925</b>	DAYTON APP CON <b>126.5 327.1</b>	WILMINGTON TOWER ★ <b>119.475 (CTAF)</b>	GND CON <b>121.6</b>	CLNC DEL <b>125.6</b>
------------------------	--------------------------------------	---	-------------------------	--------------------------

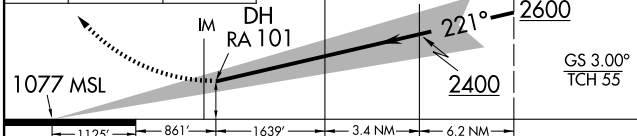


EC-2, 22 OCT 2009 to 19 NOV 2009

EC-2, 22 OCT 2009 to 19 NOV 2009

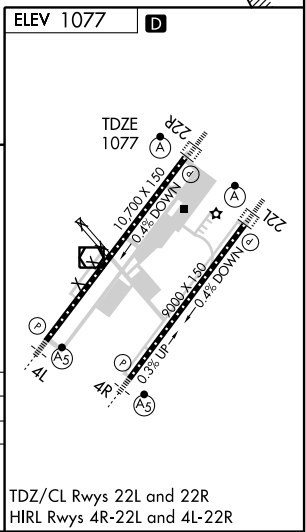


1500	4000	KLARC INT MXQ 10	VGSI and ILS glidepath not coincident.	LOM MXQ 4.8	WIZRD INT MXQ 11 RADAR
↑	↻		MM	2343	Procedure Turn NA



CATEGORY	A	B	C	D
S-ILS 22R		1177/12	100 RA 101	

**CATEGORY II ILS - SPECIAL AIRCREW & AIRCRAFT CERTIFICATION REQUIRED**



WILMINGTON, OHIO  
Amdt 5 09295

39°26'N - 83°48'W

WILMINGTON/AIRBORNE AIRPARK (ILN)  
**ILS RWY 22R (CAT II)**

TDZ/CL Rwy 22L and 22R  
HIRL Rwy 4R-22L and 4L-22R