

WILMINGTON, OHIO

AL-583 (FAA)

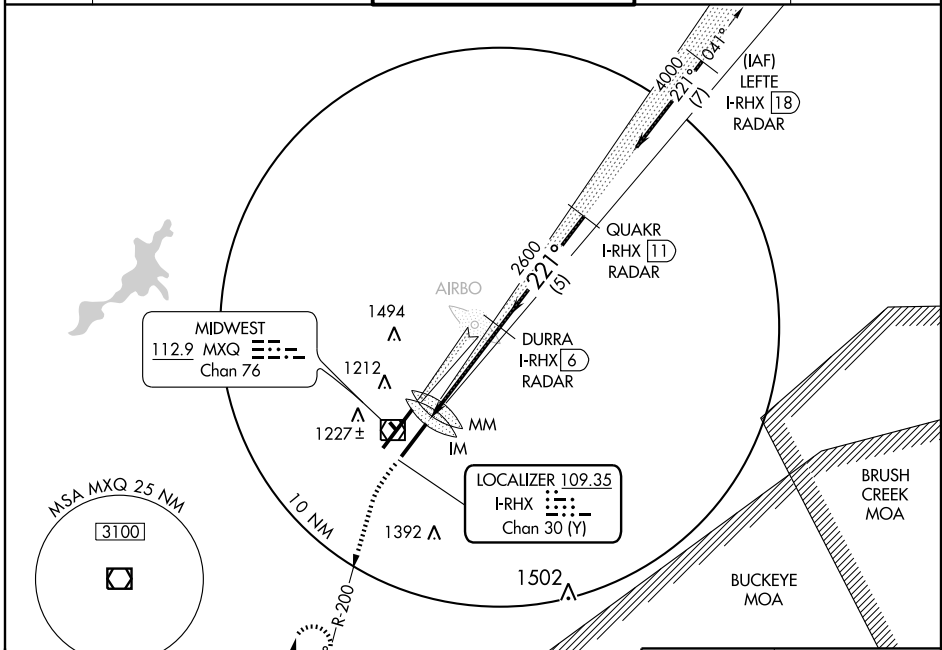
| | | |
|--|------------------------|---|
| LOC/DME I-RHX 109.35 Chan 30 (Y) | APP CRS 221° | Rwy Idg 9000 TDZE 1077 Apt Elev 1077 |
|--|------------------------|---|

ILS RWY 22L (CAT II)

WILMINGTON/AIRBORNE AIRPARK (ILN)

Obtain approach lights and rwy lights on CTAF.
 Simultaneous approaches authorized with Rwy 22R.

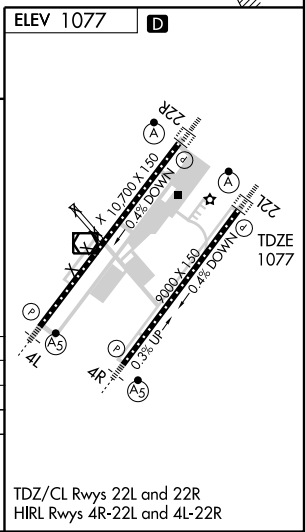
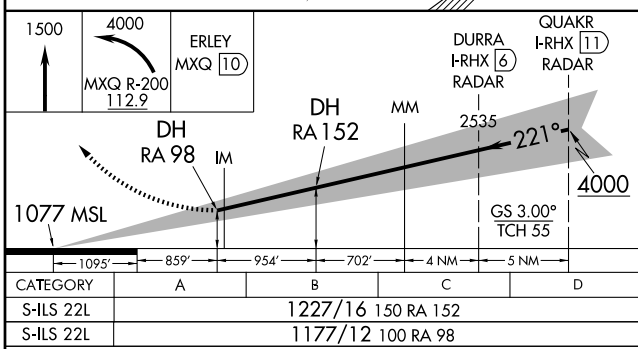
| | | | | |
|------------------------|--------------------------------------|---|-------------------------|--------------------------|
| ATIS 124.925 | DAYTON APP CON 126.5 327.1 | WILMINGTON TOWER ★ 119.475 (CTAF) | GND CON 121.6 | CLNC DEL 125.6 |
|------------------------|--------------------------------------|---|-------------------------|--------------------------|



EC-2, 22 OCT 2009 to 19 NOV 2009

EC-2, 22 OCT 2009 to 19 NOV 2009

RADAR REQUIRED



CATEGORY II ILS - SPECIAL AIRCREW & AIRCRAFT CERTIFICATION REQUIRED

TDZ/CL Rwys 22L and 22R
HIRL Rwys 4R-22L and 4L-22R

WILMINGTON, OHIO
Orig-A 09295

39°26'N - 83°48'W

WILMINGTON/AIRBORNE AIRPARK (ILN)
ILS RWY 22L (CAT II)