

# ILS RWY 22L

WILMINGTON/AIRBORNE AIRPARK (ILN)

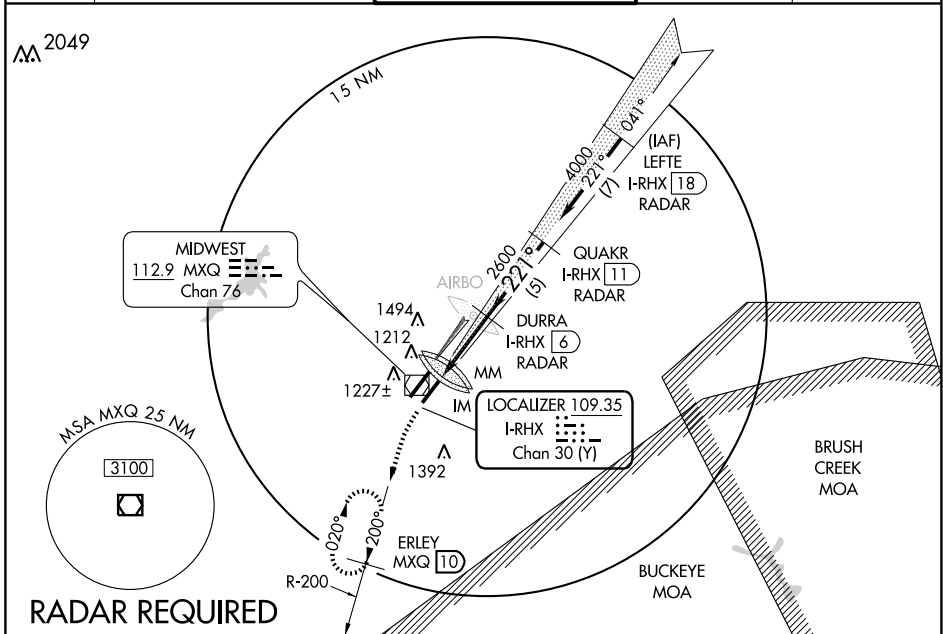
LOC/DME I-RHX <b>109.35</b> Chan <b>30 (Y)</b>	APP CRS <b>221°</b>	Rwy Idg <b>9000</b> TDZE <b>1077</b> Apt Elev <b>1077</b>
--	------------------------	---

**▼** Obtain local altimeter setting on CTAF; when not received, use Dayton Intl altimeter setting.  
**▲** Obtain approach lights and rwy lights on CTAF. Simultaneous approaches authorized with Rwy 22R.



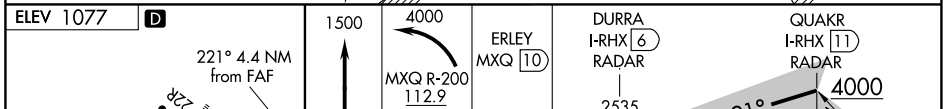
**MISSED APPROACH:** Climb to 1500, then climbing left turn to 4000 via MXQ R-200 to ERLEY/MXQ 10 DME and hold.

ATIS <b>124.925</b>	DAYTON APP CON <b>126.5 327.1</b>	WILMINGTON TOWER * <b>119.475 (CTAF)</b>	GND CON <b>121.6</b>	CLNC DEL <b>125.6</b>
------------------------	--------------------------------------	---	-------------------------	--------------------------



EC-2, 22 OCT 2009 to 19 NOV 2009

EC-2, 22 OCT 2009 to 19 NOV 2009



ELEV 1077	1500	4000	ERLEY MXQ 10	DURRA I-RHX 6 RADAR	QUAKR I-RHX 11 RADAR
			221° 4.4 NM from FAF	2535	4000
			MXQ R-200 112.9	2600*	4000
			I-RHX 1.7		GS 3.00% TCH 55
			0.1 0.3 4 NM 5 NM		

CATEGORY	A	B	C	D
S-ILS 22L	1277/18 200 (200-½)			
S-LOC 22L	1460/24 383 (400-½)			1460/50 383 (400-1)
CIRCLING	1640-1	563 (600-1)	1640-1½ 563 (600-1½)	1680-2 603 (700-2)
DAYTON INTL ALTIMETER SETTING MINIMUMS				
S-ILS 22L	1367-½ 290 (300-½)			
S-LOC 22L	1540-½ 463 (500-½)	1540-¾ 463 (500-¾)		1540-1 463 (500-1)
CIRCLING	1740-1	663 (700-1)	1740-1¾ 663 (700-1¾)	1780-2¼ 703 (800-2¼)

TDZ/CL Rwys 22L and 22R  
HIRL Rwys 4R-22L and 4L-22R

FAF to MAP 4.4 NM

Knots	60	90	120	150	180
Min:Sec	4:24	2:56	2:12	1:46	1:28