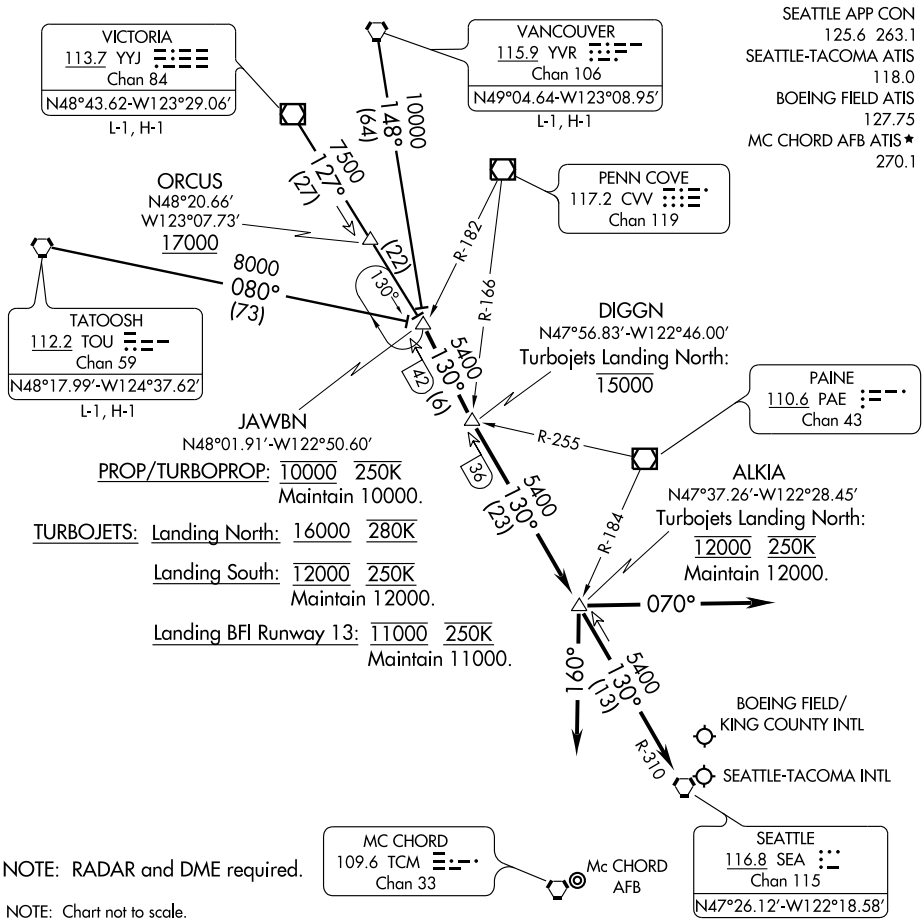


JAWBN ONE ARRIVAL

ST-582 (FAA)

SEATTLE, WASHINGTON



NW-1, 22 OCT 2009 to 19 NOV 2009

NW-1, 22 OCT 2009 to 19 NOV 2009

- TATOOSH TRANSITION (TOU.JAWBN1): From over TOU VORTAC via TOU R-080 to JAWBN INT. Thence....
- VANCOUVER TRANSITION (YVR.JAWBN1): From over YVR VORTAC via YVR R-148 to JAWBN INT. Thence....
- VICTORIA TRANSITION (YYJ.JAWBN1): From over YYJ VOR/DME via YYJ R-127 to JAWBN INT. Thence....

....From over JAWBN INT/SEA 42 DME via SEA R-310 to DIGGN/SEA 36 DME then via SEA R-310 to ALKIA INT/SEA 13 DME, thence....

LANDING NORTH: Depart ALKIA INT heading 160° for vectors to final approach course.

LANDING SOUTH: Depart ALKIA INT heading 070° for vectors to final approach course.

LANDING McCHORD AFB: After ALKIA INT proceed direct SEA VORTAC.

LOST COMMUNICATIONS: After ALKIA INT proceed direct SEA VORTAC.

JAWBN ONE ARRIVAL

SEATTLE, WASHINGTON