

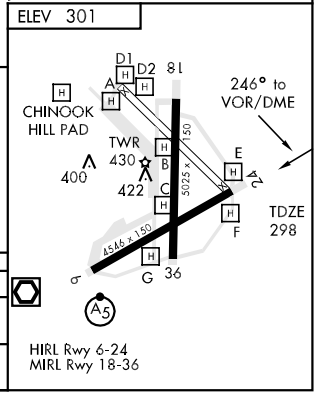
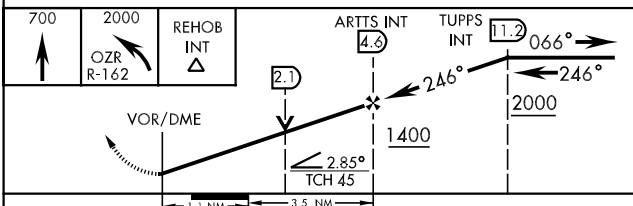
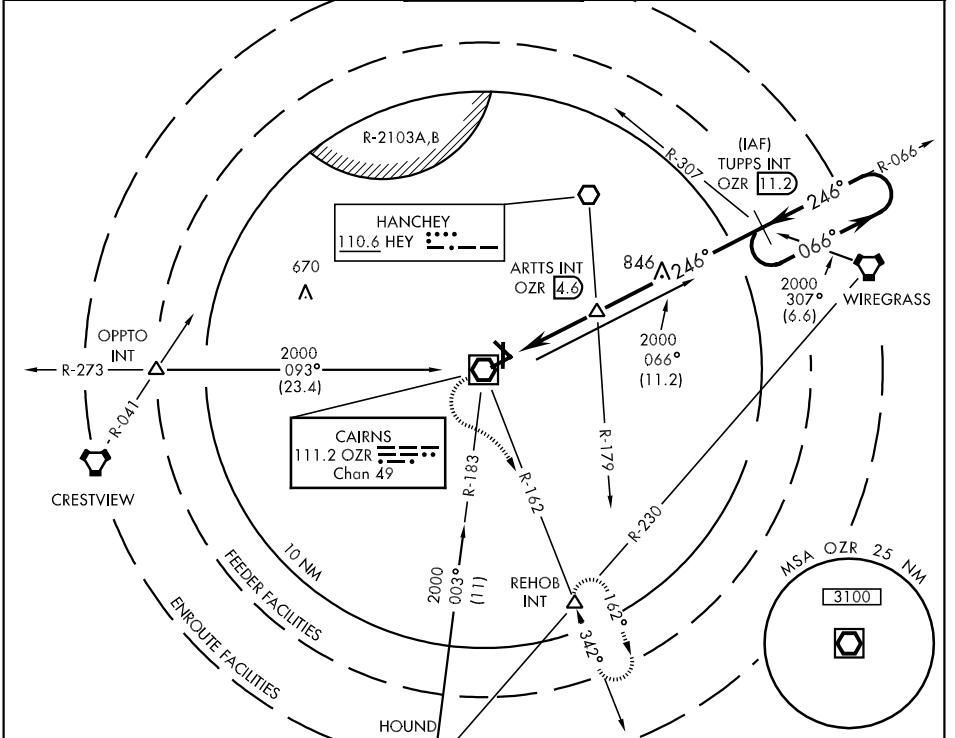
VOR/DME OZR 111.2 Chan 49	APCH CRS 246°	Rwy Idg TDZE Arpt Elev 4546 298 301
---	-------------------------	--

AL-577 [USA]

CAIRNS AAF (KOZR)

▼ MISSED APPROACH: Climb to 700 then climbing left turn to 2000 via OZR
VOR/DME R-162 to REHOB INT and hold; or when directed by ATC, climb to
700 then climbing right turn heading 290° to 2000 within 10 NM (RADAR required).

ATIS 111.2 316.15	CAIRNS APP CON 021°-120° 125.4 327.125 121°-219° 133.75 270.35 220°-340° 133.45 239.4 341°-020° 121.1 319.25	CAIRNS TOWER ★ 135.2 (CTAF) 248.55	GND CON 121.9 288.25	CLNC DEL 118.075 380.1	PAR
---------------------------------------	--	--	--	--	-----



CATEGORY	A	B	C	D
S-24	680-1	382	(400-1)	680-1¼ 382 (400-1¼)
CIRCLING	740-1 439 (500-1)	780-1 479 (500-1)	800-1½ 499 (500-1½)	860-2 559 (600-2)

SE-4, 22 OCT 2009 to 19 NOV 2009

SE-4, 22 OCT 2009 to 19 NOV 2009