

FORT RUCKER, ALABAMA

# RNAV (GPS) RWY 6

APCH CRS **064°**  
 Rwy Idg **4546**  
 TDZE **298**  
 Arpt Elev **301**

AL-577 [USA]

CAIRNS AAF (KOZR)

▼ Visibility reduction by helicopters NA.  
 \* When ALS inop, increase CAT AB RVR to 5000 and vis to 1 mile, CAT CD RVR to 6000 and vis to 1½ miles.



MISSED APPROACH: Climbing right turn to 2000 direct REHOB and hold.

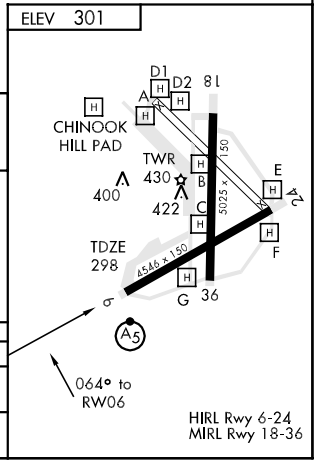
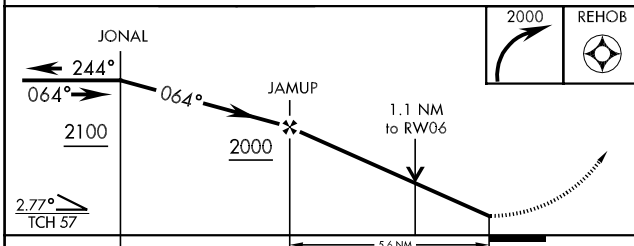
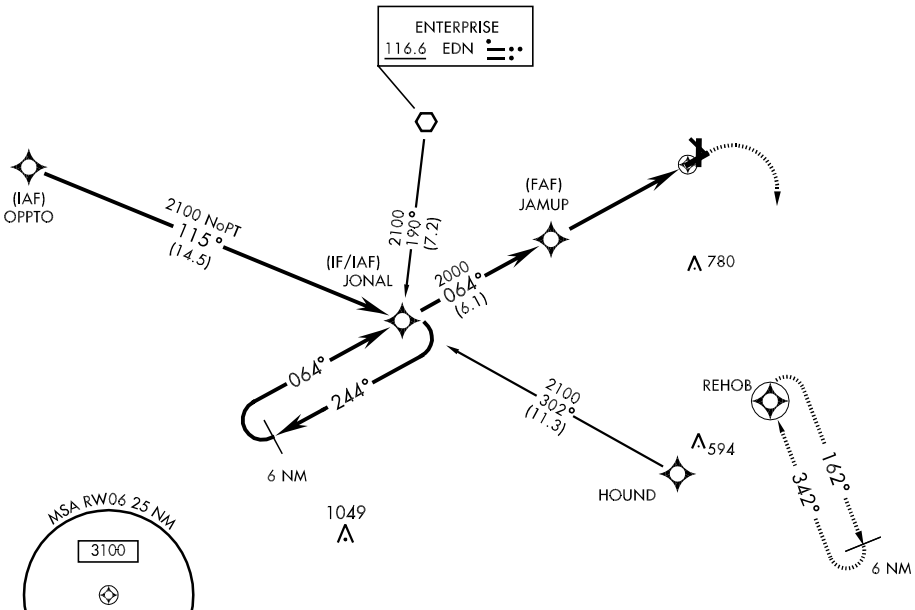
ATIS <b>111.2</b> <b>316.15</b>	CAIRNS APP CON 021°-120° <b>125.4 327.125</b> 121°-219° <b>133.75 270.35</b> 220°-340° <b>133.45 239.4</b> 341°-020° <b>121.1 319.25</b>		CAIRNS TOWER * <b>135.2 (CTAF)</b> <b>248.55</b>	GND CON <b>121.9</b> <b>288.25</b>	CLNC DEL <b>118.075</b> <b>380.1</b>	PAR

DME/DME RNP-0.3 NA.

R-2103A,B

SE-4, 22 OCT 2009 to 19 NOV 2009

SE-4, 22 OCT 2009 to 19 NOV 2009



CATEGORY	A	B	C	D
LNAV MDA *	700/40		402 (500-¾)	
CIRCLING	740-1 439 (500-1)	780-1 479 (500-1)	800-1½ 499 (500-1½)	860-2 559 (600-2)

FORT RUCKER, ALABAMA  
 Orig 09071

31° 16'N-85°43'W

CAIRNS AAF (KOZR)

# RNAV (GPS) RWY 6