

WAAS CH 63110 W36A	APCH CRS 004°	Rwy Idg TDZE Arpt Elev 5025 298 301
--	-------------------------	---

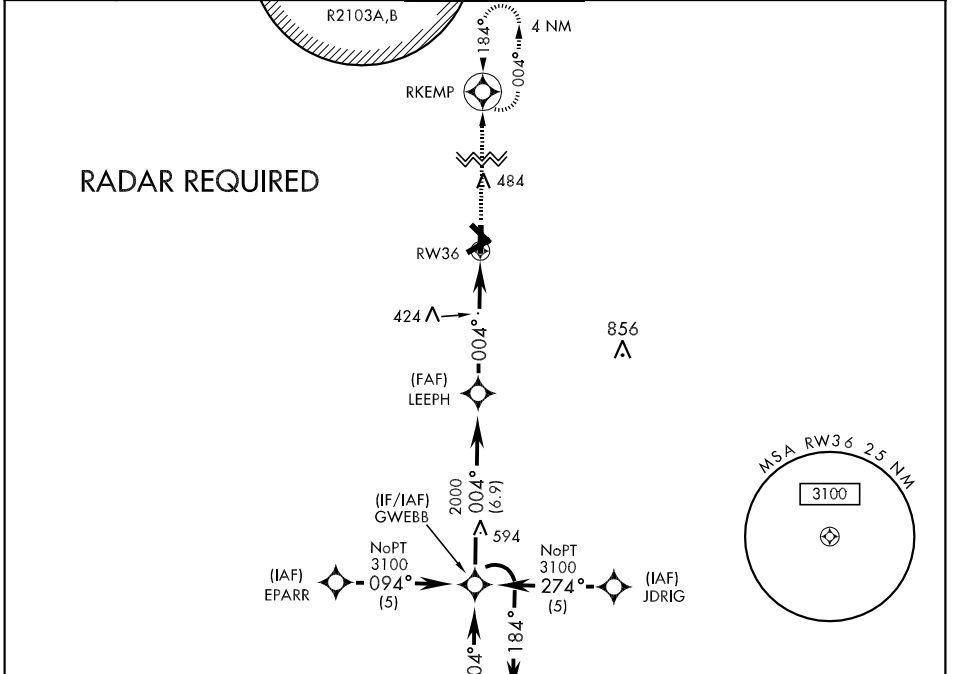
AL-577 [USA]

CAIRNS AAF (KOZR)

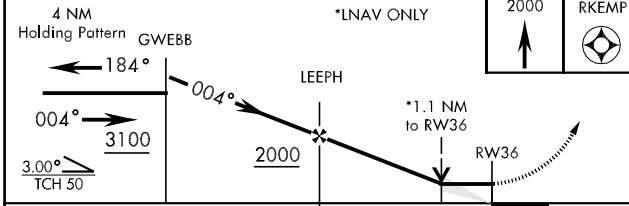
▼ DME/DME RNP-0.3 NA.
For uncompensated BARO-VNAV systems, LNAV/VNAV NA below -15C (5F) or above 48C (118F).

MISSED APPROACH: Climb to 2000 direct RKEMP and hold.

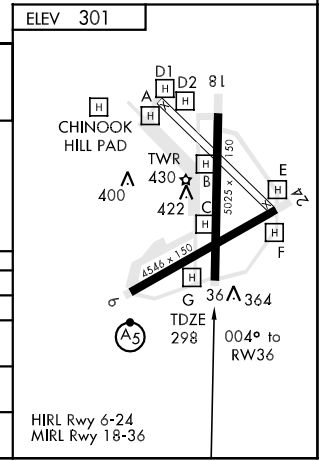
ATIS 111.2 316.15	CAIRNS APP CON 021°-120° 125.4 327.125 121°-219° 133.75 270.35 220°-340° 133.45 239.4 341°-020° 121.1 319.25	CAIRNS TOWER ★ 135.2 (CTAF) 248.55	GND CON 121.9 288.25	CLNC DEL 118.075 380.1	PAR
---------------------------------------	--	--	--	--	-----



RADAR REQUIRED



CATEGORY	A	B	C	D
LPV DA	565-1	267	(300-1)	
LNAV/VNAV DA	634-1¼	336	(400-1¼)	
LNAV MDA	680-1	382	(400-1)	680-1¼ 382 (400-1¼)
CIRCLING	740-1 439 (500-1)	780-1 479 (500-1)	800-1½ 499 (500-1½)	860-2 559 (600-2)



SE-4, 22 OCT 2009 to 19 NOV 2009

SE-4, 22 OCT 2009 to 19 NOV 2009