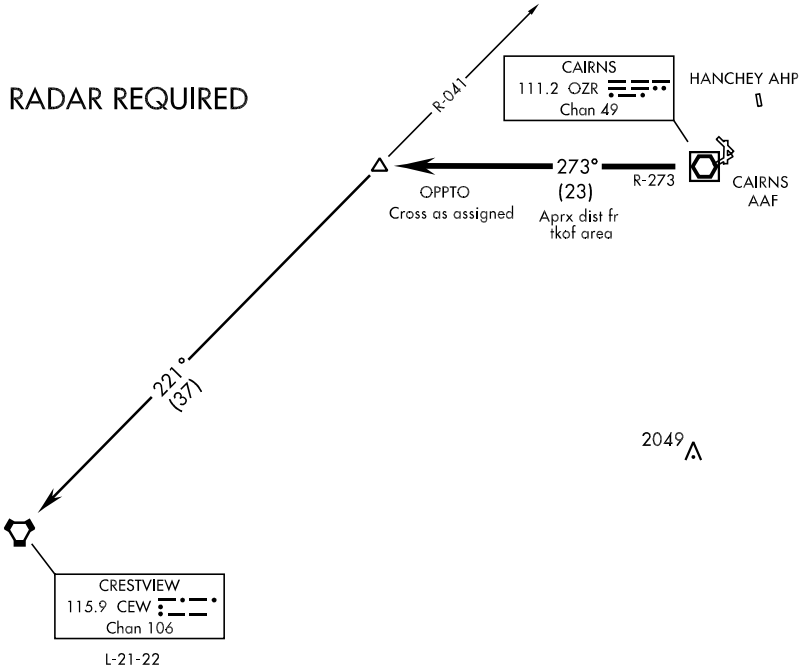


OPPTO-TWO DEPARTURE (OPPTO2•OPPTO)

ATIS 111.2 316.15
 CLNC DEL
 118.075 380.1
 GND CON
 121.9 288.25
 CAIRNS TOWER ★
 135.2 (CTAF) 248.55
 DEP CON
 133.45 239.4
 JACKSONVILLE CENTER
 120.2 346.4

SL-577 [USA]

RADAR REQUIRED



SE-4, 22 OCT 2009 to 19 NOV 2009

SE-4, 22 OCT 2009 to 19 NOV 2009

DEPARTURE ROUTE DESCRIPTION

- TAKE-OFF RWY 6: Climbing left turn heading 270°
 - TAKE-OFF RWY 18: Climbing right turn heading 205°
 - TAKE-OFF RWY 24: Climbing right turn heading 300°
 - TAKE-OFF RWY 36: Climbing left turn heading 270°
 - TAKE-OFF PAD A: Climb heading 310°
 - TAKE-OFF PAD D2: Climb heading 360°
- Maintain 2000, expect clearance to requested altitude/flight level ten (10) minutes after departure.
- Expect Radar vector to intercept OZR VOR/DME R-273 to OPPTO INT. Thence via Transition.
- CRESTVIEW TRANSITION: (OPPTO2 • CEW) Turn left via CEW R-041 to CEW VORTAC.

OPPTO-TWO DEPARTURE (OPPTO2•OPPTO)