

LOC I-OZR 109.7 Chan 34	APCH CRS 064°	Rwy Idg TDZE 4546 298	Arpt Elev 301
---	-------------------------	---	-------------------------

AL-577 [USA]

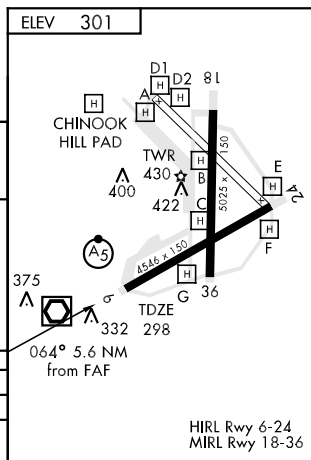
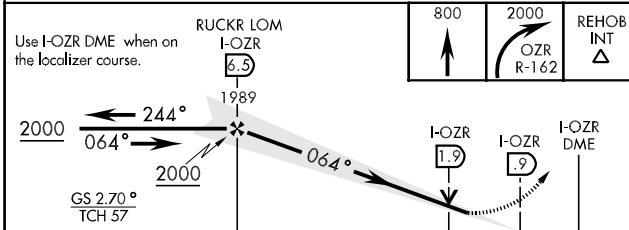
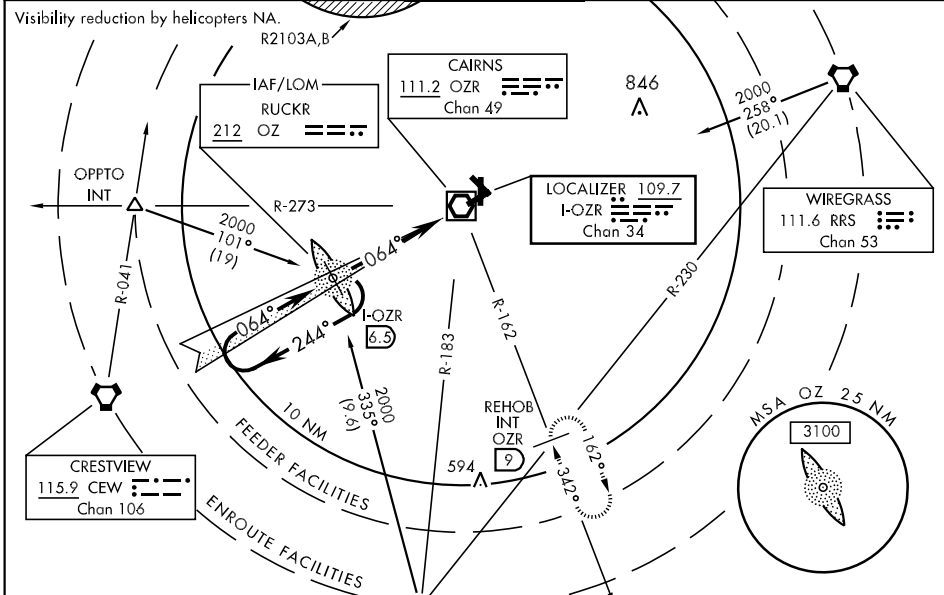
CAIRNS AAF (KOZR)

▼ * When ALS inop, increase CAT ABC RVR to 5000 and vis to 1 mile, and CAT D RVR to 6000 and vis to 1¼ miles.



MISSED APPROACH: Climb to 800 then climbing right turn to 2000 via OZR VOR/DME R-162 to REHOB INT (OZR 9 DME) and hold; or when directed by ATC, climb to 800 then climbing left turn to 2000 heading 290° within 10 NM (RADAR required).

ATIS 111.2 316.15	CAIRNS APP CON 021°-120° 125.4 327.125 121°-219° 133.75 270.35 220°-340° 133.45 239.4 341°-020° 121.1 319.25	CAIRNS TOWER ★ 135.2 (CTAF) 248.55	GND CON 121.9 288.25	CLNC DEL 118.075 380.1	PAR
---------------------------------------	--	--	--	--	-----



CATEGORY	A	B	C	D
S-ILS 6		548/40	250	(300-¾)
S-LOC 6 *		640/40	342	(400-¾)
CIRCLING	740-1 439 (500-1)	780-1 479 (500-1)	800-1½ 499 (500-1½)	860-2 559 (600-2)
S-PAR 6		548/50	250	(300-1) GS 2.7°

FAF to MAP 5.6 NM					
Knots	60	90	120	150	180
Min:Sec	5:36	3:44	2:48	2:14	1:52

SE-4, 22 OCT 2009 to 19 NOV 2009

SE-4, 22 OCT 2009 to 19 NOV 2009