

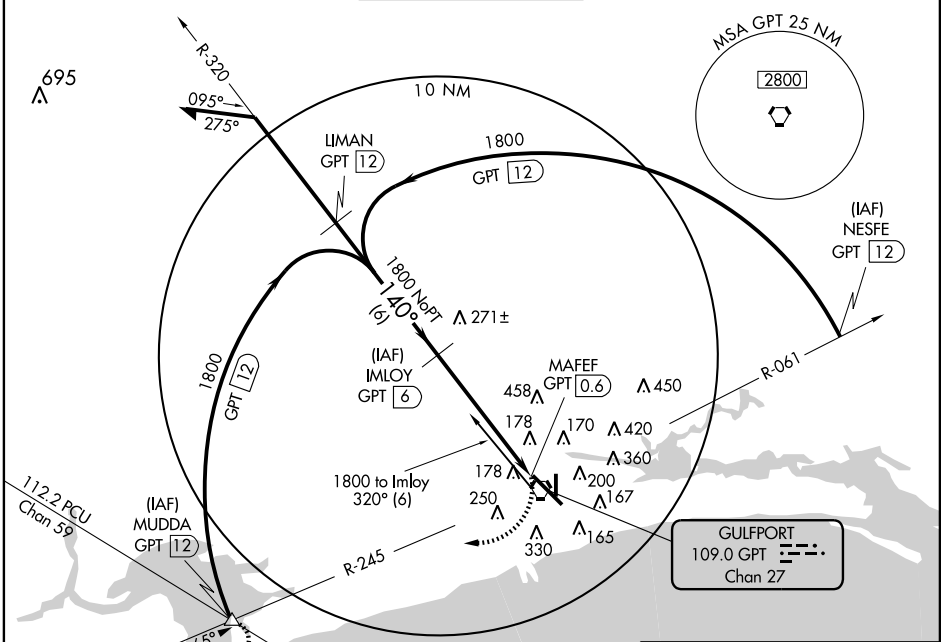
# VOR/DME or TACAN RWY 14

GULFPORT-BILOXI INTL (GPT)

VORTAC GPT <b>109.0</b> Chan <b>27</b>	APP CRS <b>140°</b>	Rwy Idg TDZE Apt Elev	<b>9002</b> <b>27</b> <b>28</b>
--	------------------------	-----------------------------	---------------------------------------

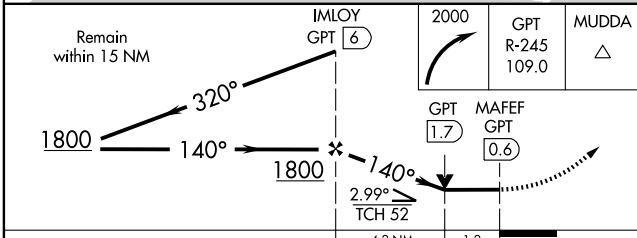
For inoperative MALSRS increase S-14 Cat D visibility to RVR 6000 and Cat E visibility to 1 1/2 mile.		MISSED APPROACH: Climbing right turn to 2000 via GPT R-245 to MUDDA Int/12 DME and hold.
		ASR

ATIS <b>119.45</b>	GULFPORT APP CON * <b>124.6 254.25</b>	GULFPORT TOWER * <b>123.7 (CTAF) 0 339.8</b>	GND CON <b>120.4 348.6</b>	UNICOM <b>122.95</b>
-----------------------	---	---	-------------------------------	-------------------------



SC-4, 22 OCT 2009 to 19 NOV 2009

SC-4, 22 OCT 2009 to 19 NOV 2009



CATEGORY	A	B	C	D	E
S-14	440/24	413 (500-1/2)	440/40 413 (500-3/4)	440/50	413 (500-1)
CIRCLING	500-1 472 (500-1)	660-1 632 (700-1)	660-1 3/4 632 (700-1 3/4)	660-2 632 (700-2)	820-2 3/4 792 (800-2 3/4)

