

# RNAV (GPS) RWY 36

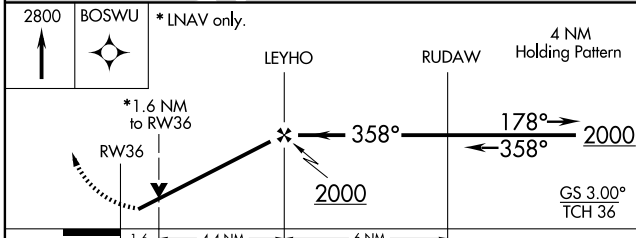
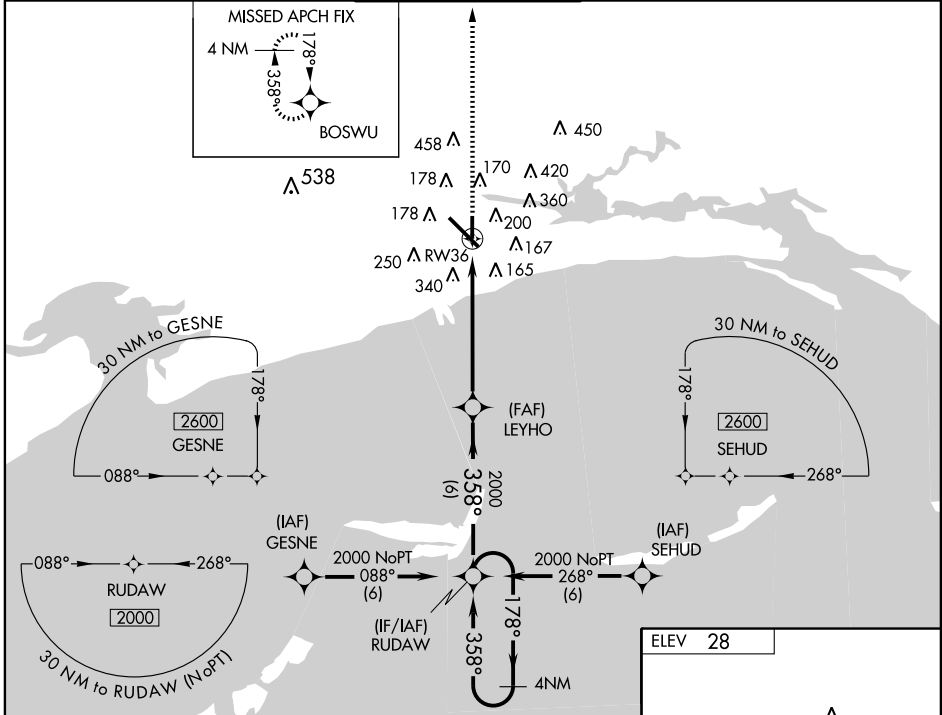
GULFPORT-BILOXI INTL (GPT)

WAAS CH <b>42812</b> <b>W36A</b>	APP CRS <b>358°</b>	Rwy Idg TDZE <b>28</b> Apt Elev <b>28</b>	<b>4935</b>
--	------------------------	---	-------------

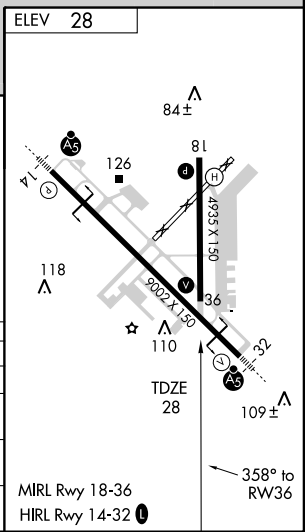
For uncompensated Baro-VNAV systems, LNAV/VNAV NA below -1.5°C (5°F) or above 49°C (120°F).  
 DME/DME RNP-0.3 NA. Visibility reduction by helicopters NA. When local altimeter setting not received, use Pascagoula altimeter setting and increase all DA 67 feet and all MDA 80 feet and increase LPV and LNAV/VNAV all Cats, LNAV and circling Cats C and D visibility ¼ mile. VDP and Baro-VNAV NA when using Pascagoula altimeter setting.

**MISSED APPROACH:**  
 Climb to 2800 direct BOSWU and hold.

ATIS <b>119.45</b>	GULFPORT APP CON * <b>124.6 254.25</b>	GULFPORT TOWER * <b>123.7 (CTAF) 0 339.8</b>	GND CON <b>120.4 348.6</b>	UNICOM <b>122.95</b>
-----------------------	---	---	-------------------------------	-------------------------



CATEGORY	A	B	C	D
LPV DA	328-1 300 (300-1)			
LNAV/VNAV DA	660-2¼ 632 (700-2¼)			
LNAV MDA	580-1	552 (600-1)	580-1½ 552 (600-1½)	580-1¾ 552 (600-1¾)
CIRCLING	580-1	552 (600-1)	640-1¾ 612 (700-1¾)	660-2 632 (700-2)



SC-4, 22 OCT 2009 to 19 NOV 2009

SC-4, 22 OCT 2009 to 19 NOV 2009