

RNAV (GPS) RWY 14

GULFPORT-BILOXI INTL (GPT)

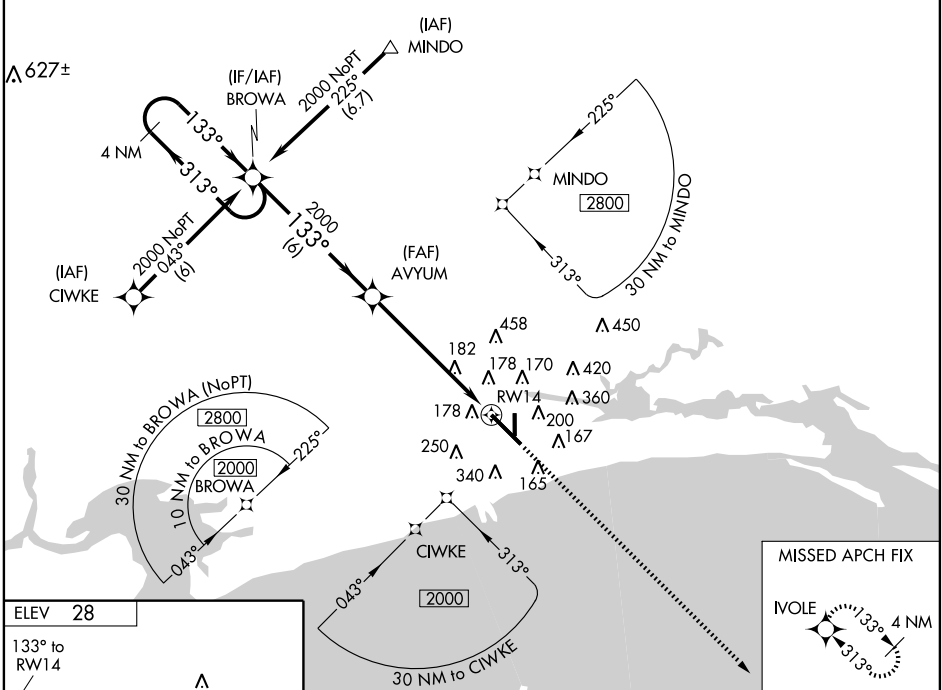
WAAS CH 97301 W14A	APP CRS 133°	Rwy Idg 9002 TDZE 27 Apt Elev 28
--	------------------------	---

⚠ For uncompensated Baro-VNAV systems, LNAV/VNAV NA below -15°C (5°F) or above 49°C (120°F). DME/DME RNP-0.3 NA. When local altimeter setting not received, use Pascagoula altimeter setting and increase all DA 67 feet and all MDA 80 feet, increase LNAV/VNAV visibility all Cats to RVR 6000 and increase circling Cat C and D visibility ¼ mile.
⚠ For inoperative MALSR increase LNAV Cat D visibility to RVR 6000. For inoperative MALSR when using Pascagoula altimeter setting, increase LPV visibility all Cats to RVR 5000. VDP and Baro-VNAV NA when using Pascagoula altimeter setting.

MALSR

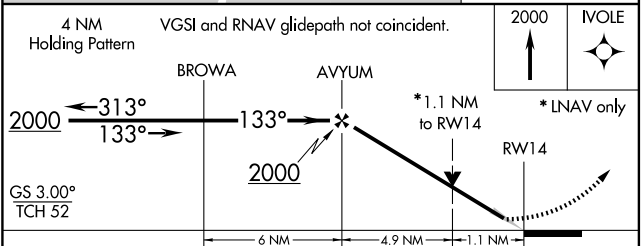
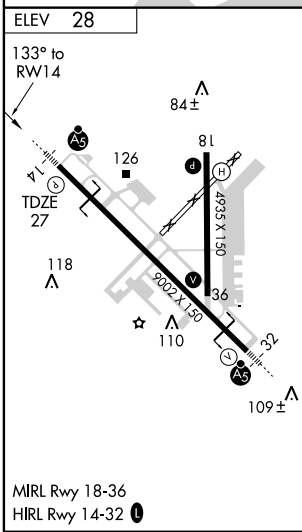
MISSED APPROACH:
 Climb to 2000 direct IVOLE and hold.

ATIS 119.45	GULFPORT APP CON ★ 124.6 254.25	GULFPORT TOWER ★ 123.7 (CTAF) 339.8	GND CON 120.4 348.6	UNICOM 122.95
-----------------------	---	--	-------------------------------	-------------------------



SC-4, 22 OCT 2009 to 19 NOV 2009

SC-4, 22 OCT 2009 to 19 NOV 2009



CATEGORY	A	B	C	D
LPV DA		227/24	200 (200-½)	
LNAV/VNAV DA		464/50	437 (500-1)	
LNAV MDA	440/24	413 (500-½)	440/40 413 (500-¾)	440/50 413 (500-1)
CIRCLING	500-1 472 (500-1)	560-1 532 (600-1)	640-1¾ 612 (700-1¾)	660-2 632 (700-2)