

ILS or LOC/DME RWY 32

GULFPORT-BILOXI INTL (GPT)

LOC I-UXI 108.3	APP CRS 313°	Rwy Idg TDZE Apt Elev	9002 28 28
---------------------------	------------------------	-----------------------------	---------------------------------------

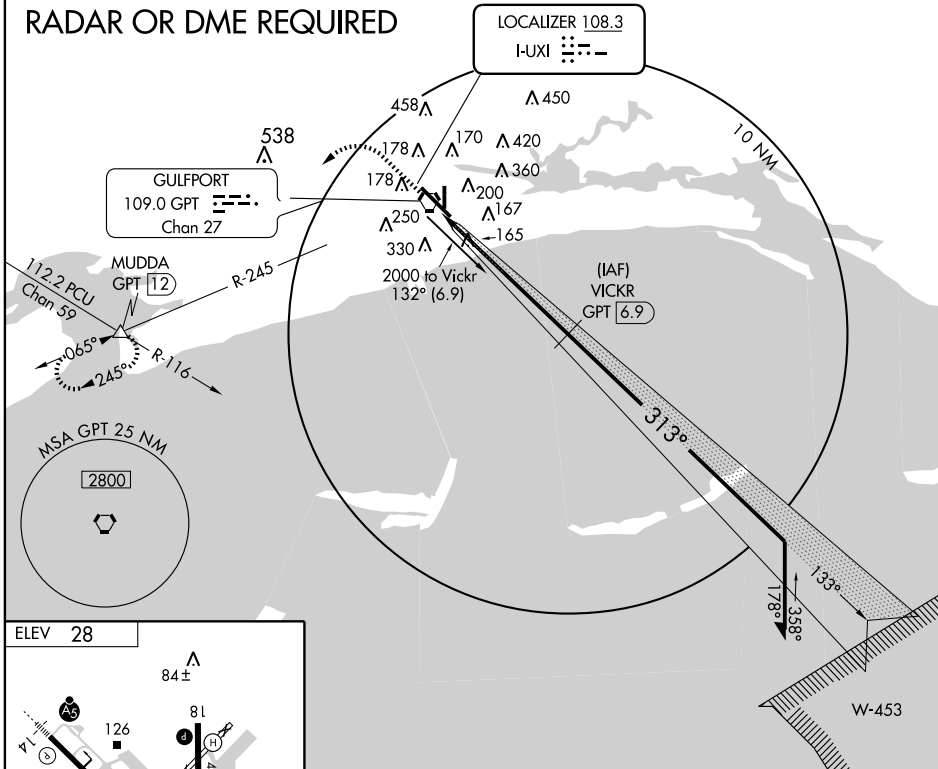
▼ Inoperative table does not apply to MALSR S-ILS 32. For inoperative MALSR increase S-LOC 32 Cat A, B, C visibility to RVR 5000, and Cat E to 6000. DME from GPT VOR/DME. Simultaneous reception of I-UXI and GPT DME required.

MALSR

MISSED APPROACH: Climb to 500 then climbing left turn to 2000 via GPT R-245 to MUDDA Int/GPT 12 DME and hold.

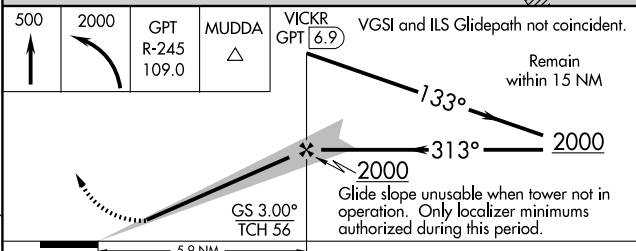
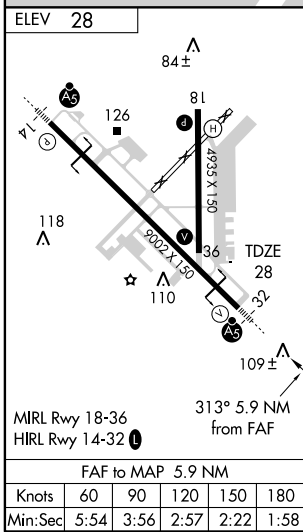
ATIS 119.45	GULFPORT APP CON ★ 124.6 254.25	GULFPORT TOWER ★ 123.7 (CTAF) 339.8	GND CON 120.4 348.6	UNICOM 122.95
-----------------------	---	---	-------------------------------	-------------------------

RADAR OR DME REQUIRED



SC-4, 22 OCT 2009 to 19 NOV 2009

SC-4, 22 OCT 2009 to 19 NOV 2009



CATEGORY	A	B	C	D	E
S-ILS 32		228/40	200 (200-¾)		
S-LOC 32		380/40	352 (400-¾)		
CIRCLING	500-1 472 (500-1)	660-1 632 (700-1)	660-1¾ 632 (700-1¾)	660-2 632 (700-2)	820-2¾ 792 (800-2¾)