

# ILS or LOC RWY 14

GULFPORT-BILOXI INTL (GPT)

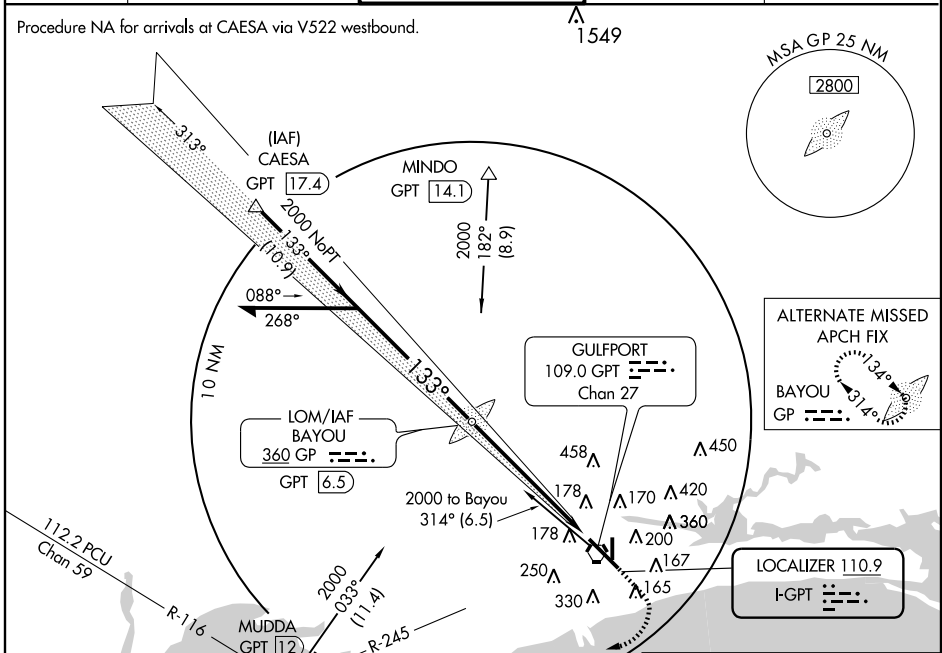
LOC I-GPT <b>110.9</b>	APP CRS <b>133°</b>	Rwy Idg TDZE <b>27</b> Apt Elev <b>28</b>	<b>9002</b>
---------------------------	------------------------	---	-------------

**▼** For inoperative MALS increase S-ILS 14 Cat E visibility to RVR 4000 and S-LOC 14 Cat E visibility to 1½ mile. \*RVR 1800 authorized with the use of FD or AP or HUD to DA.

**MALS** MISSED APPROACH: Climb to 500 then climbing right turn to 2000 via GPT R-245 to MUDDA Int/12 DME and hold.

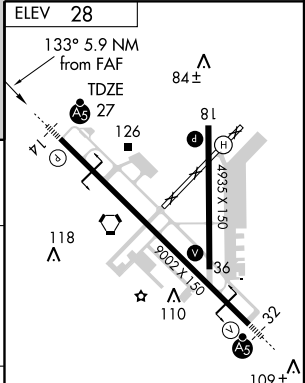
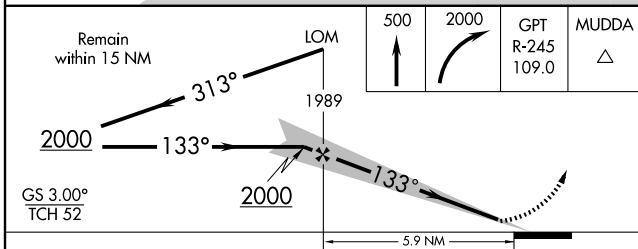
ATIS <b>119.45</b>	GULFPORT APP CON * <b>124.6 254.25</b>	GULFPORT TOWER * <b>123.7 (CTAF) 0 339.8</b>	GND CON <b>120.4 348.6</b>	UNICOM <b>122.95</b>
-----------------------	---	---	-------------------------------	-------------------------

Procedure NA for arrivals at CAESA via V522 westbound.



SC-4, 22 OCT 2009 to 19 NOV 2009

SC-4, 22 OCT 2009 to 19 NOV 2009



CATEGORY	A	B	C	D	E
S-ILS 14	* 227/24 200 (200-½)				
S-LOC 14	440/24	413 (500-½)	440/40	413 (500-¾)	440/50 413 (500-1)
CIRCLING	500-1 472 (500-1)	660-1 632 (700-1)	660-1¾ 632 (700-1¾)	660-2 632 (700-2)	820-2¾ 792 (800-2¾)

MIRL Rwy 18-36	MIRL Rwy 14-32
FAF to MAP 5.9 NM	
Knots	60 90 120 150 180
Min:Sec	5:54 3:56 2:57 2:22 1:58