

LOC I-GPT <b>110.9</b>	APCH CRS <b>133°</b>	Rwy Idg TDZE Arpt Elev <b>9002</b> <b>27</b> <b>28</b>	JAL-576 [USAF]	GULFPORT-BILOXI INTL (KGPT)
---------------------------	-------------------------	---	----------------	-----------------------------

▼ \* When ALS inop, increase CAT CDE vis to ¾ mile.  
 \*\* When ALS inop, increase CAT C vis to 1 mile, CAT DE vis to 1 ½ miles.

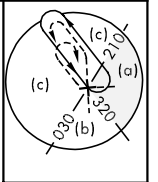
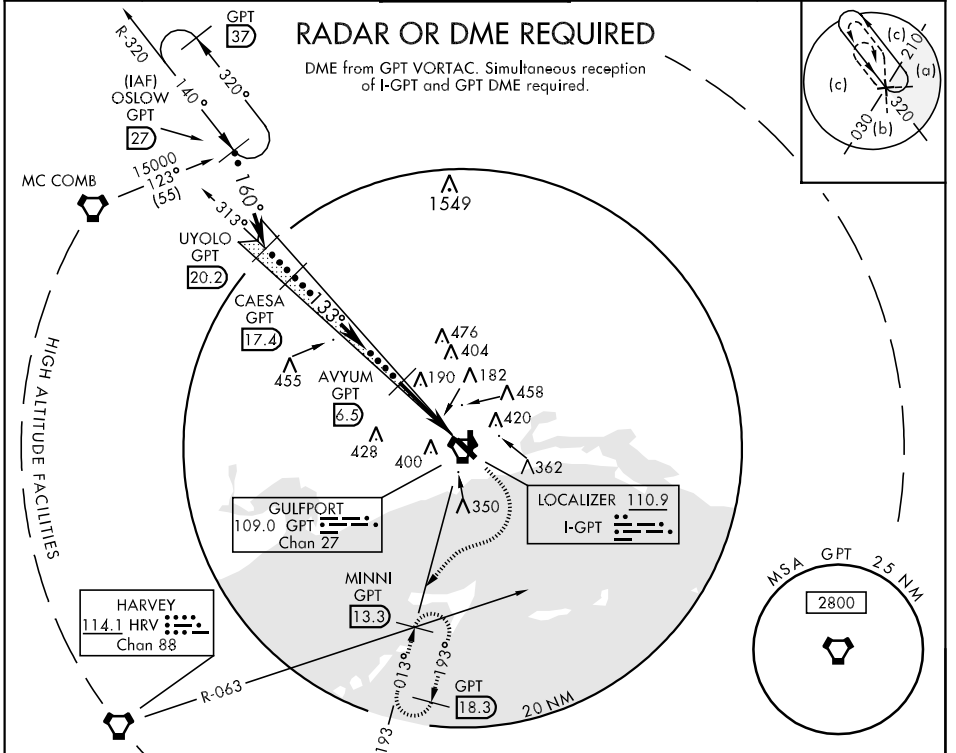


MISSED APPROACH: Climb to 500, then climbing right turn to 3000 via GPT R-193 to MINNI INT/GPT 13.3 DME and hold.

ATIS ★ <b>119.45</b>	GULFPORT APP CON 130°-309° <b>124.6 354.1</b> 310°-129° <b>127.5 254.25</b>	GULFPORT TOWER ★ <b>123.7</b> CTAF <b>0 339.8</b>	GND CON <b>120.4 348.6</b>	ASR
-------------------------	---	--	-------------------------------	-----

**RADAR OR DME REQUIRED**

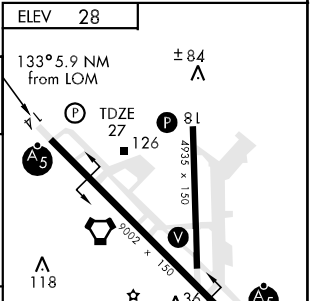
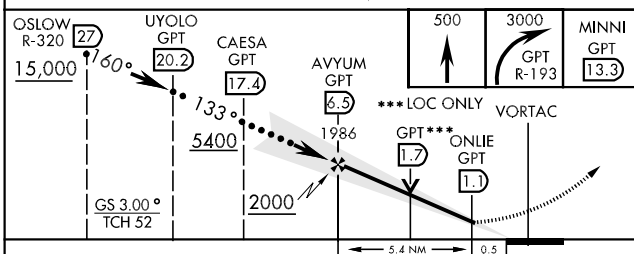
DME from GPT VORTAC. Simultaneous reception of I-GPT and GPT DME required.



SC-4, 22 OCT 2009 to 19 NOV 2009

SC-4, 22 OCT 2009 to 19 NOV 2009

EMERG SAFE ALT 100 NM 3100



CATEGORY	C	D	E
S-ILS 14 *	227/24	200	(200-½)
S-LOC 14 **	440/40 413	(500-¾)	440/50 413 (500-1)
CIRCLING	660-1¾	660-2	820-2¾
	632 (700-1¾)	632 (700-2)	792 (800-2¾)

HIRL Rwy 14-32  
 MRL Rwy 18-36  
 REL Rwy 14, 18, 32, and 36