

NDB TWT	APP CRS	Rwy Idg	5000
276	356°	TDZE	372
		Apt Elev	372

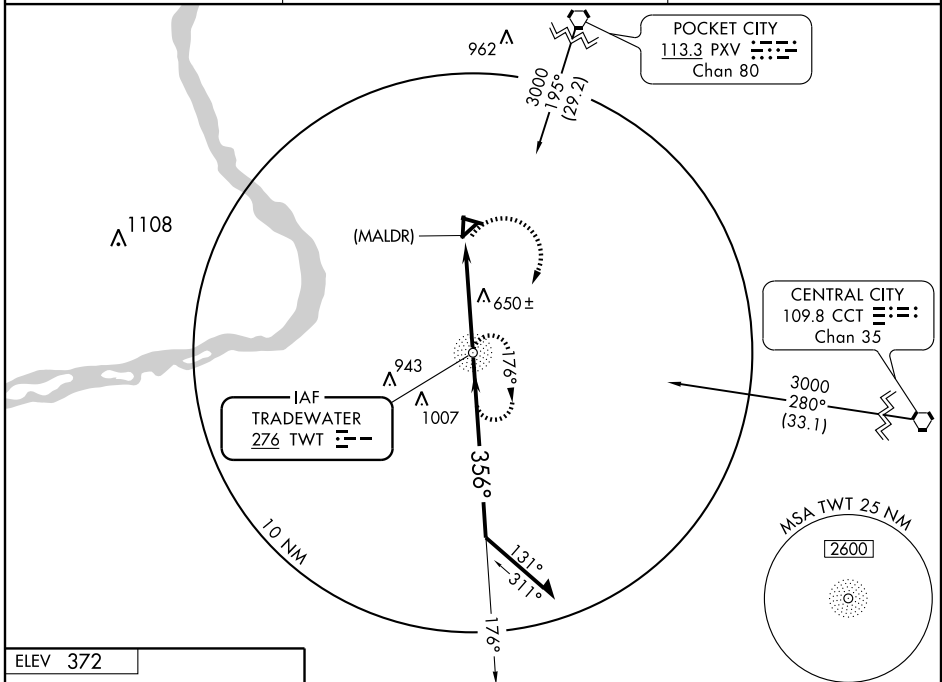
NDB or GPS RWY 36

STURGIS MUNI (TWT)

NA Obtain local altimeter setting on CTAF; if not received, use Evansville altimeter setting.

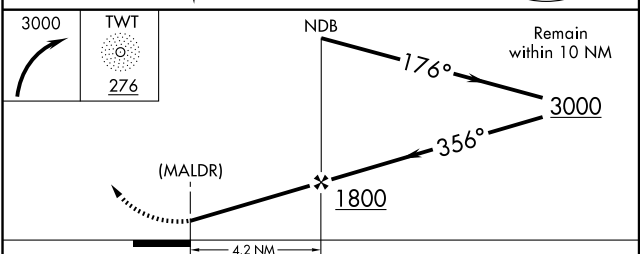
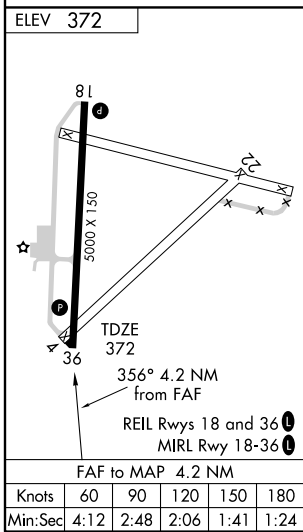
MISSED APPROACH: Climbing right turn to 3000 direct TWT NDB and hold.

AWOS-3 118.775	EVANSVILLE APP CON * 126.4 226.4	UNICOM 122.8 (CTAF) 0
--------------------------	--	--



SE-1, 22 OCT 2009 to 19 NOV 2009

SE-1, 22 OCT 2009 to 19 NOV 2009



CATEGORY	A	B	C	D
S-36	960-1	588 (600-1)	960-1½ 588 (600-1½)	960-1¾ 588 (600-1¾)
CIRCLING	960-1	588 (600-1)	1000-1¾ 628 (700-1¾)	1000-2 628 (700-2)
EVANSVILLE ALTIMETER SETTING MINIMUMS				
S-36	1120-1 748 (800-1)	1120-1¼ 748 (800-1¼)	1120-2¼ 748 (800-2¼)	1120-2½ 748 (800-2½)
CIRCLING	1120-1 748 (800-1)	1120-1¼ 748 (800-1¼)	1160-2¼ 788 (800-2¼)	1160-2½ 788 (800-2½)