

RNAV (GPS) RWY 32

SEYMOUR/FREEMAN MUNI (SEFR)

WAAS CH 99403 W32A	APP CRS 316°	Rwy Idg 5502 TDZE 574 Apt Elev 583
--	------------------------	---

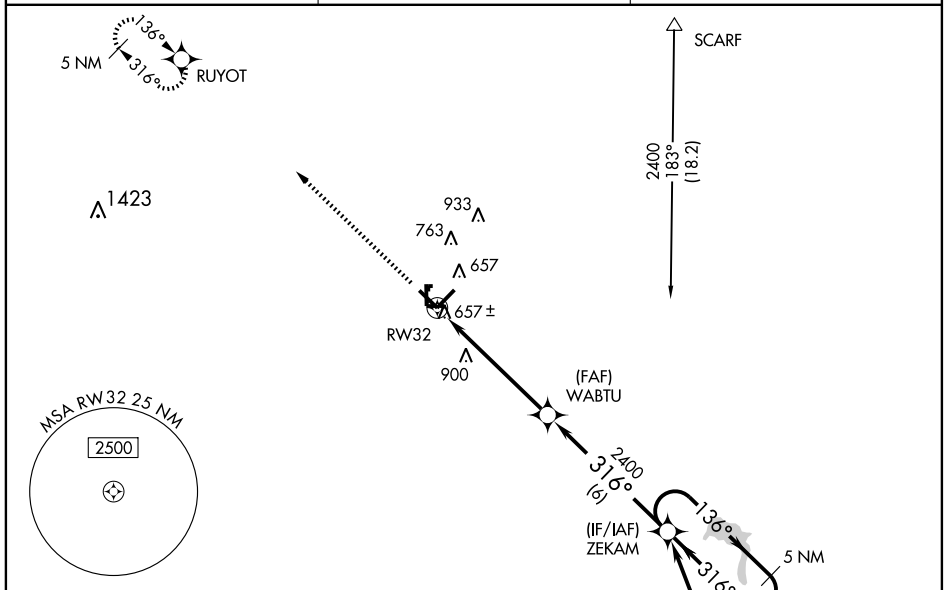
▼ If local altimeter setting not received, use Louisville Intl - Standiford Field altimeter setting and increase all DAs/MDAs 120 feet. VDP NA when using Louisville Intl - Standiford Field altimeter setting. Baro-VNAV NA when using Louisville Intl - Standiford Field altimeter setting. For uncompensated Baro-VNAV systems, LNAV/VNAV NA below -16°C (4°F) or above 47°C (116°F). DME/DME RNP-0.3 NA. Visibility reduction by helicopters NA.

MISSED APPROACH:
Climb to 2600 direct RUYOT and hold.

AWOS-3
119.425

INDIANAPOLIS CENTER
124.775 269.45

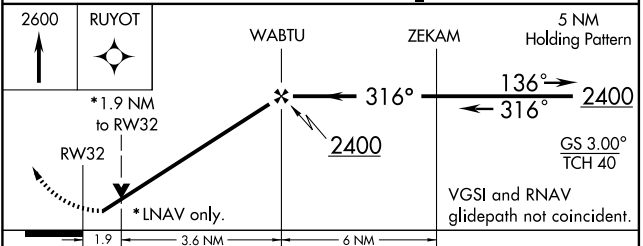
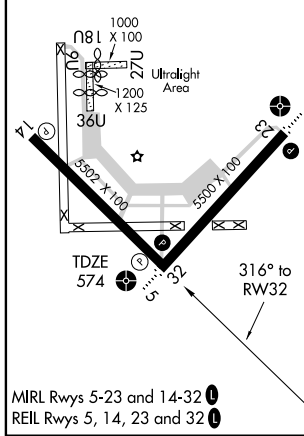
UNICOM
122.8 (CTAF) 0



EC-2, 22 OCT 2009 to 19 NOV 2009

EC-2, 22 OCT 2009 to 19 NOV 2009

ELEV 583	Rwy 18U Idg 1000'
	Rwy 36U Idg 800'
	Rwy 9U Idg 880'



CATEGORY	A	B	C	D
LPV DA	907-1¼ 333 (400-1¼)			
LNAV/VNAV DA	931-1¼ 357 (400-1¼)			
LNAV MDA	1200-1	626 (700-1)	1200-1¾ 626 (700-1¾)	1200-2 626 (700-2)
CIRCLING	1200-1	617 (700-1)	1200-1¾ 617 (700-1¾)	1280-2¼ 697 (700-2¼)