

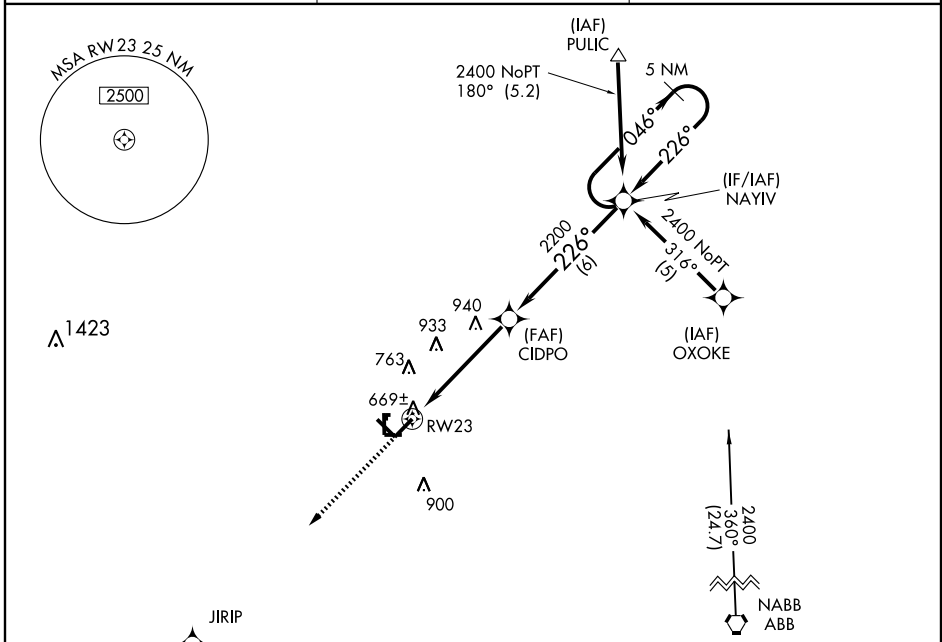
RNAV (GPS) RWY 23

SEYMOUR/FREEMAN MUNI (SER)

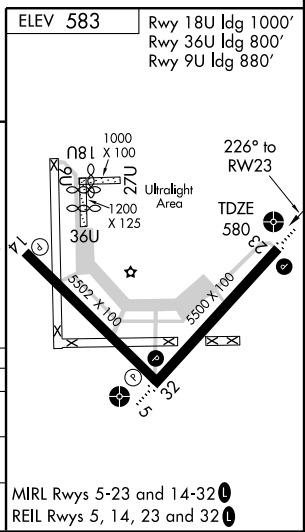
WAAS CH 48903 W23A	APP CRS 226°	Rwy ldg 5500 TDZE 580 Apt Elev 583
--	------------------------	---

<p>▽ If local altimeter setting not received, use Louisville Intl-Standiford Field altimeter setting, and increase all DAs/MDAs 120 feet.</p> <p>△ NA VDP NA when using Louisville Intl-Standiford Field altimeter setting. Inoperative table does not apply to LNAV Cat C. DME/DME RNP-0.3 NA.</p>	<p>ODALS</p>	<p>MISSED APPROACH: Climb to 2500 direct JIRIP and hold.</p>
---	--------------	--

AWOS-3 119.425	INDIANAPOLIS CENTER 124.775 269.45	UNICOM 122.8 (CTAF)
--------------------------	--	-------------------------------



2500	JIRIP	VGSIs and RNAV glidepath not coincident.			
		CIDPO	NAYIV	5 NM Holding Pattern	
		*1.9 NM to RW23	226°	046°	2400
		*LNAV Only	2200	GS 3.00°	TCH 40
		1.9	3 NM	6 NM	
CATEGORY		A	B	C	D
LPV DA		886-1 306 (400-1)			
LNAV MDA		1200-3/4 620 (700-3/4)	1200-1 3/4 620 (700-1 3/4)	1200-2 620 (700-2)	
CIRCLING		1200-1 617 (700-1)	1200-1 3/4 617 (700-1 3/4)	1280-2 1/4 697 (700-2 1/4)	



EC-2, 22 OCT 2009 to 19 NOV 2009

EC-2, 22 OCT 2009 to 19 NOV 2009