

NDB RWY 5

SEYMOUR/ FREEMAN MUNI (SEFR)

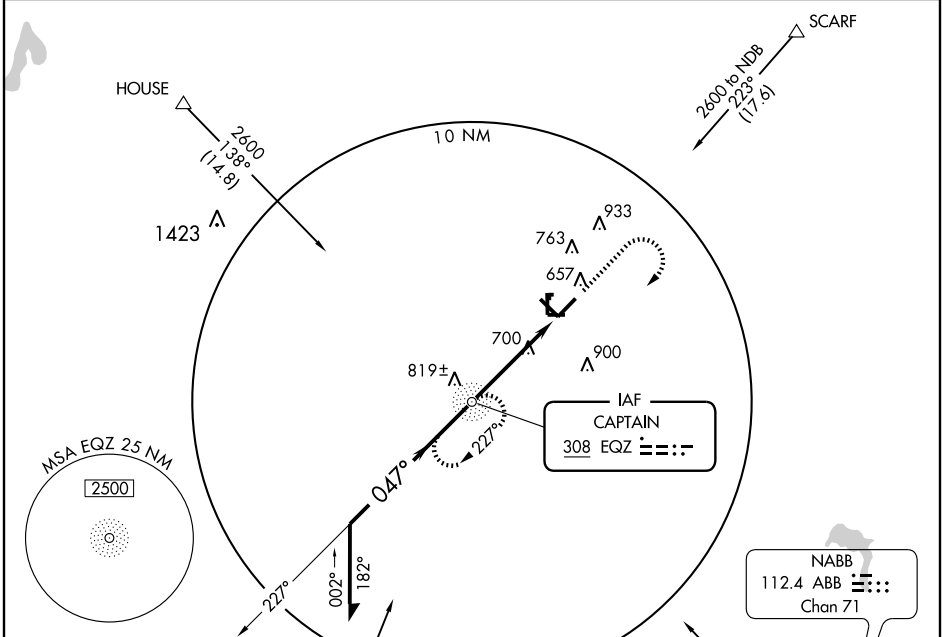
NDB EQZ 308	APP CRS 047°	Rwy Idg 5500
		TDZE 575
		Apt Elev 583

▼ If local altimeter setting not received, use Louisville Intl-Standiford Fld altimeter setting and increase all MDAs 120 feet. Inoperative table does not apply to Cat C.
▲ NA Visibility reduction by helicopters NA.

ODALS

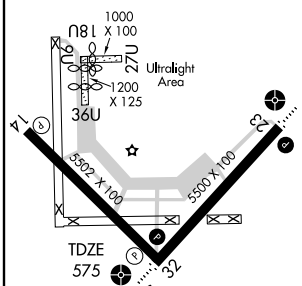
MISSED APPROACH: Climb to 2600, then right turn direct EQZ NDB and hold.

AWOS-3 119.425	INDIANAPOLIS CENTER 124.775 269.45	UNICOM 122.8 (CTAF) 0
--------------------------	--	---------------------------------



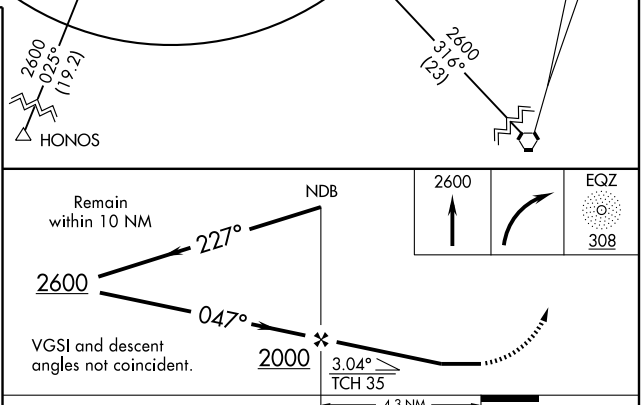
ELEV 583	Rwy 18U Idg 1000'
	Rwy 36U Idg 800'
	Rwy 9U Idg 880'

MIRL Rwy 5-23 and 14-32
 REIL Rwy 5, 14, 23 and 32



FAF to MAP 4.3 NM

Knots	60	90	120	150	180
Min:Sec	4:18	2:52	2:09	1:43	1:26



CATEGORY	A	B	C	D
S-5	1060-3/4	485 (500-3/4)	1060-1 1/4 485 (500-1 1/4)	1060-1 1/2 485 (500-1 1/2)
CIRCLING	1060-1	477 (500-1)	1120-1 1/2 537 (600-1 1/2)	1280-2 1/4 697 (700-2 1/4)

EC-2, 22 OCT 2009 to 19 NOV 2009

EC-2, 22 OCT 2009 to 19 NOV 2009