

LOC/NDB RWY 5

SEYMOUR/ FREEMAN MUNI (SEFR)

LOC I-SER 108.5	APP CRS 046°	Rwy ldg TDZE Apt Elev	5500 575 583
---------------------------	------------------------	-----------------------------	---

NA If local altimeter setting not received, use Louisville Intl -Standford Field altimeter setting and increase all MDAs 120 feet. Inoperative table does not apply to Cat C. Visibility reduction by helicopters NA.

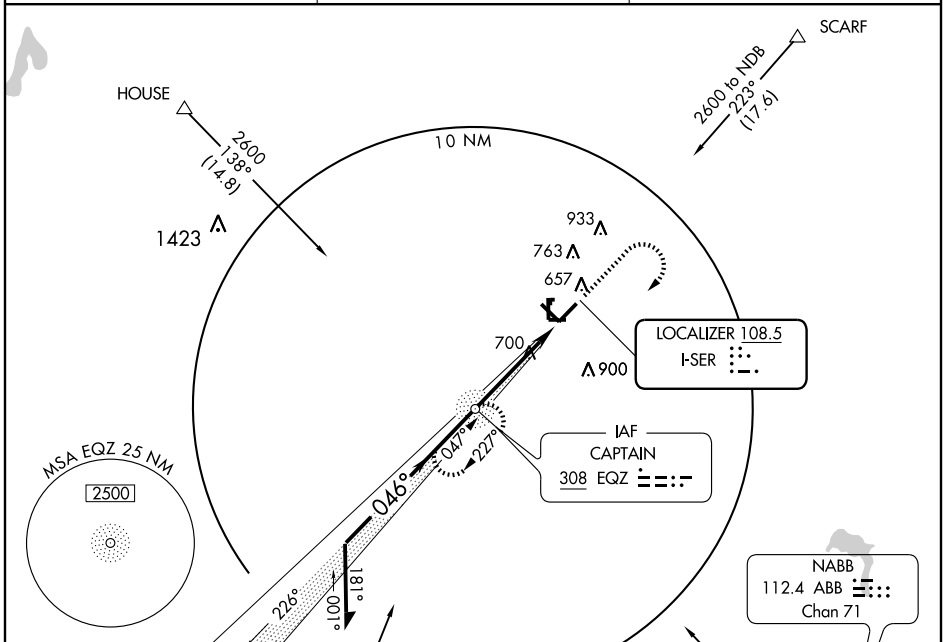
ODALS


MISSED APPROACH: Climb to 2600, then right turn direct EQZ NDB and hold.

AWOS-3
119.425

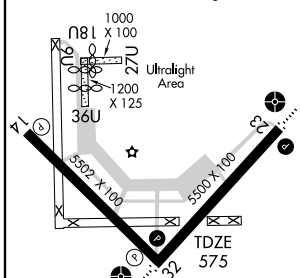
INDIANAPOLIS CENTER
124.775 269.45

UNICOM
122.8 (CTAF)

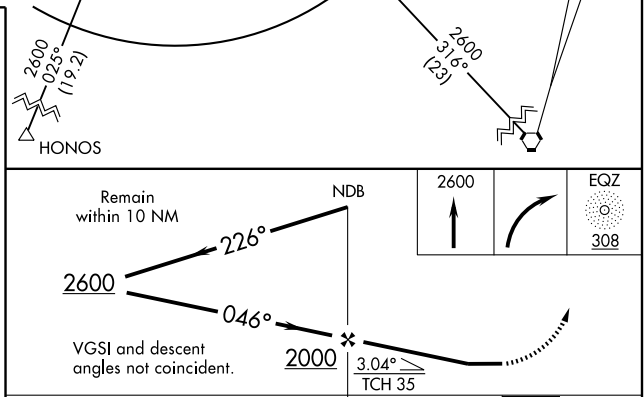


ELEV 583	Rwy 18U ldg 1000'
	Rwy 36U ldg 800'
	Rwy 9U ldg 880'

MIRL Rwy 5-23 and 14-32
 REIL Rwy 5, 14, 23 and 32



FAF to MAP 4.3 NM					
Knots	60	90	120	150	180
Min:Sec	4:18	2:52	2:09	1:43	1:26



CATEGORY	A	B	C	D
S-5	1000-3/4 425 (500-3/4)		1000-1 1/4 425 (500-1 1/4)	
CIRCLING	1000-1 417 (500-1)	1040-1 457 (500-1)	1120-1 1/2 537 (600-1 1/2)	1280-2 1/4 697 (700-2 1/4)

EC-2, 22 OCT 2009 to 19 NOV 2009

EC-2, 22 OCT 2009 to 19 NOV 2009