

RNAV (GPS) RWY 36L

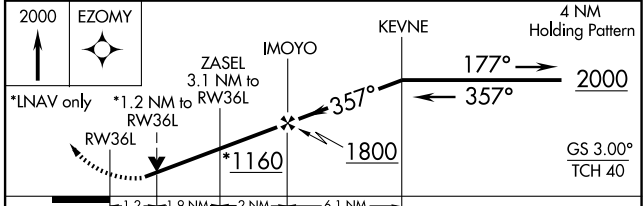
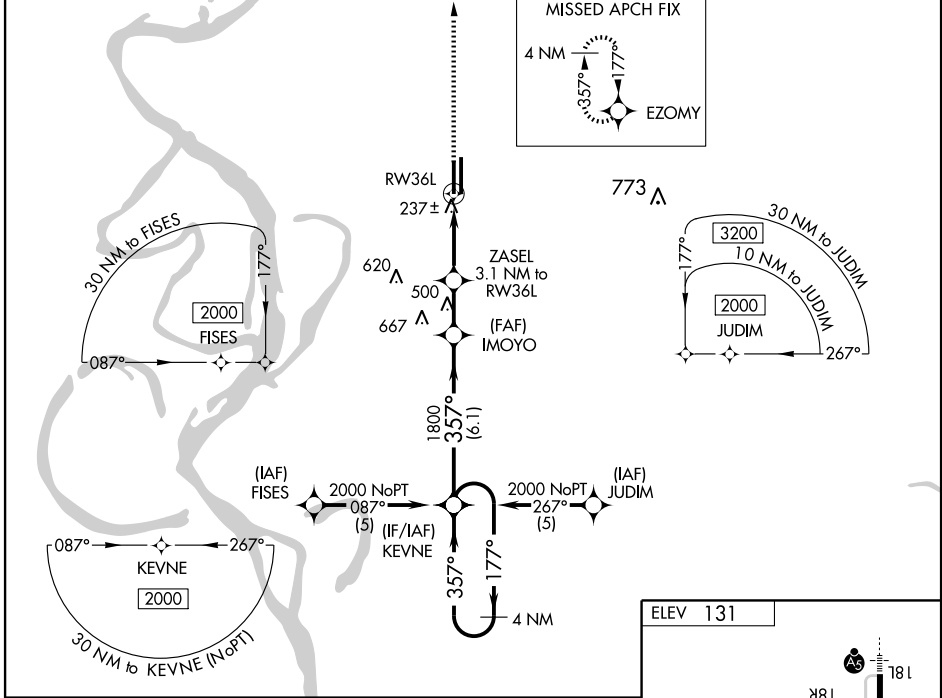
GREENVILLE/MID DELTA RGNL (GLH)

WAAS CH 77611 W36A	APP CRS 357°	Rwy Idg 7019 TDZE 130 Apt Elev 131
--	------------------------	---

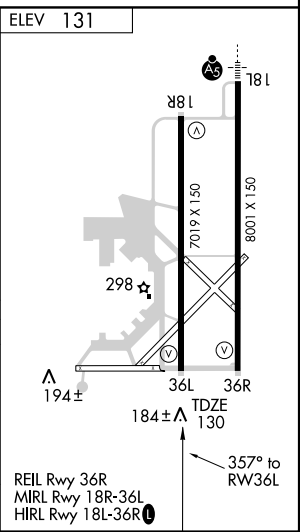
⚠ For uncompensated Baro-VNAV systems, LNAV/VNAV NA below -15°C (5°F) or above 48°C (118°F).
⚠ DME/DME RNP-0.3 NA. Visibility reduction by helicopters NA. When local altimeter setting not received, use Greenwood altimeter setting and increase LPV DA to 576, increase LNAV/VNAV DA to 621, increase all MDA 120 feet, increase LPV visibility all Cats ¼ mile, increase LNAV/VNAV visibility all Cats ½ mile, increase LNAV Cat C visibility ¼ mile, LNAV Cat D visibility ½ mile, and increase Circling Cat D visibility ¼ mile. VDP and Baro-VNAV NA when using Greenwood altimeter setting.

MISSED APPROACH:
Climb to 2000 direct EZOMY and hold.

ASOS 125.525	MEMPHIS CENTER 135.875 269.35	GREENVILLE TOWER ★ 119.0 (CTAF) 0 256.9	GND CON 121.8 256.9	UNICOM 122.95
------------------------	---	---	-------------------------------	-------------------------



CATEGORY	A	B	C	D
LPV DA	467-1¼ 337 (400-1¼)			
LNAV/ VNAV DA	512-1¼ 382 (400-1¼)			
LNAV MDA	540-1 410 (500-1)	540-1¼ 410 (500-1¼)		
CIRCLING	600-1 469 (500-1)	600-1½ 469 (500-1½)	700-2 569 (600-2)	



SC-4, 22 OCT 2009 to 19 NOV 2009

SC-4, 22 OCT 2009 to 19 NOV 2009