

RNAV (GPS) RWY 18R

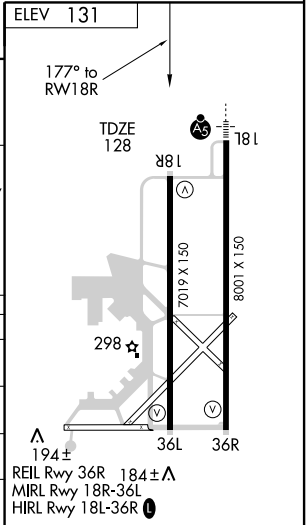
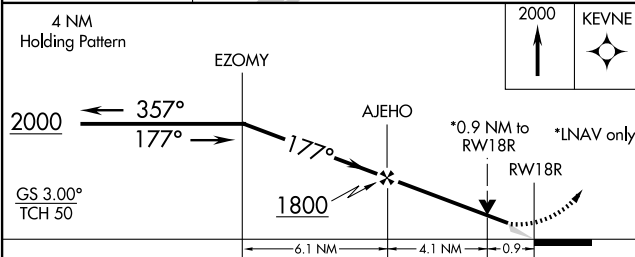
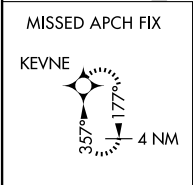
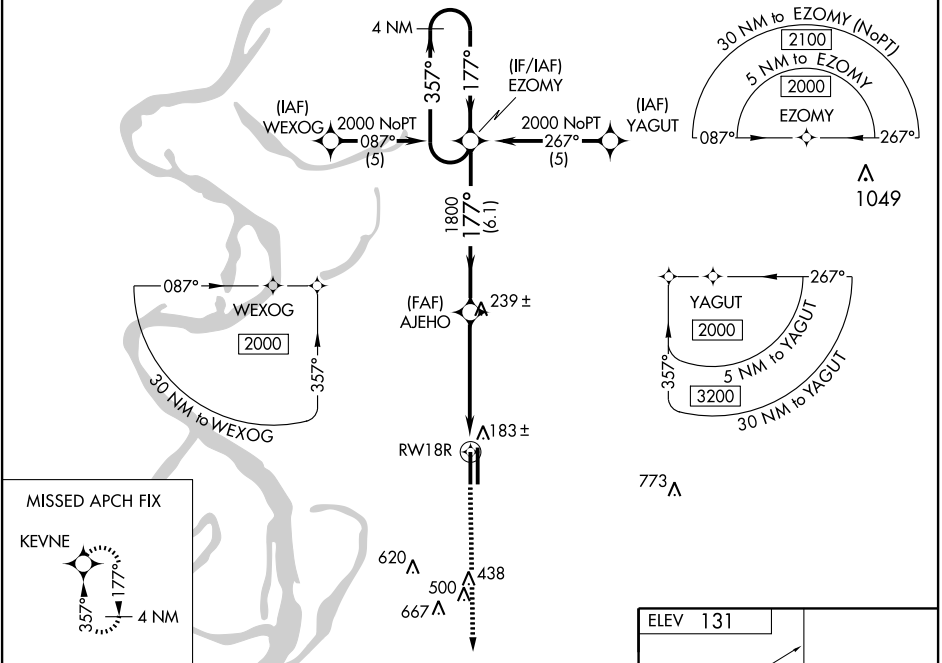
GREENVILLE/MID DELTA RGNL (GLH)

WAAS CH 70411 W18B	APP CRS 177°	Rwy Idg 7019 TDZE 128 Apt Elev 131
---------------------------------	------------------------	---

▼ For uncompensated Baro-VNAV systems, LNAV/VNAV NA below -15°C (5°F) or above 48°C (118°F).
▲ DME/DME RNP-0.3 NA. When local altimeter setting not received, use Greenwood altimeter setting and increase LPV DA to 487, increase LNAV/VNAV DA to 555, increase all MDA 120 feet, increase LPV visibility all Cats ¼ mile, increase LNAV/VNAV visibility all Cats ½ mile, increase LNAV Cat C and D visibility ¼ mile, and increase Circling Cat D visibility ¼ mile. VDP and Baro-VNAV NA when using Greenwood altimeter setting.

MISSED APPROACH: Climb to 2000 direct KEVNE and hold.

ASOS 125.525	MEMPHIS CENTER 135.875 269.35	GREENVILLE TOWER* 119.0 (CTAF) 0 256.9	GND CON 121.8 256.9	UNICOM 122.95
------------------------	---	---	-------------------------------	-------------------------



CATEGORY	A	B	C	D
LPV DA		378-1	250 (300-1)	
LNAV/VNAV DA		446-1	318 (400-1)	
LNAV MDA		480-1	352 (400-1)	480-1¼ 352 (400-1¼)
CIRCLING	600-1	469 (500-1)	600-1½ 469 (500-1½)	700-2 569 (600-2)

SC-4, 22 OCT 2009 to 19 NOV 2009

SC-4, 22 OCT 2009 to 19 NOV 2009