

ILS OR LOC RWY 18L

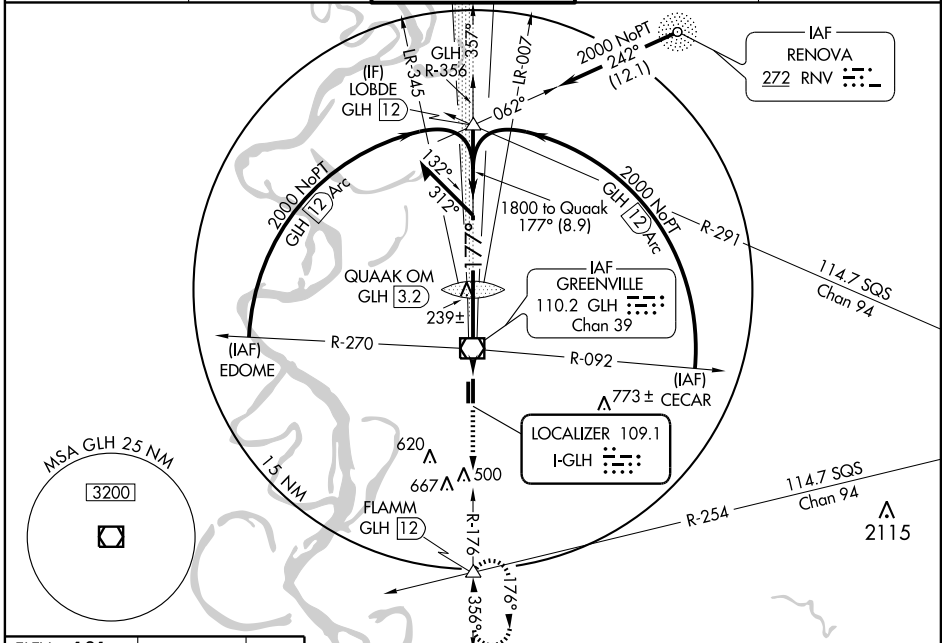
GREENVILLE/MID DELTA RGNL (GLH)

LOC I-GLH 109.1	APP CRS 177°	Rwy Idg 8001
		TDZE 129
		Apt Elev 131

▼ When control tower closed, except for operators with approved weather reporting service, use Greenwood altimeter setting.
 ▲ DME or FM required for LOC Minimums.
 Greenwood Altimeter Setting Minimums: Inoperative table does not apply.
 S-ILS and S-LOC visibility increase ½ mile for inoperative MALS/R.

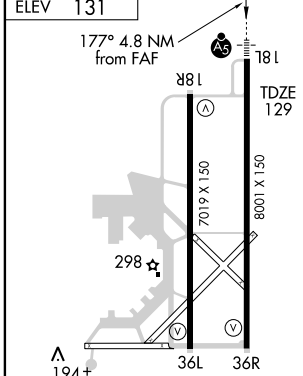
MALS R
 MISSED APPROACH: Climb to 2000 via GLH R-176 to FLAMM Int/ GLH 12 DME and hold.

ASOS 125.525	MEMPHIS CENTER 135.875 269.35	GREENVILLE TOWER* 119.0 (CTAF) 256.9	GND CON 121.8 256.9	UNICOM 122.95
------------------------	---	--	-------------------------------	-------------------------



SC-4, 22 OCT 2009 to 19 NOV 2009

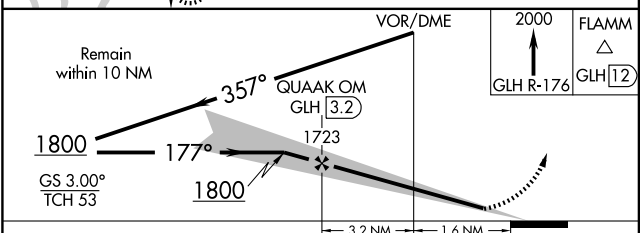
SC-4, 22 OCT 2009 to 19 NOV 2009



REIL Rwy 36R 184± A
 MIRL Rwy 18R-36L
 HIRL Rwy 18L-36R

FAF to MAP 4.8 NM

Knots	60	90	120	150	180
Min:Sec	4:48	3:12	2:24	1:55	1:36



CATEGORY	A	B	C	D
S-ILS 18L	329-½ 200 (200-½)			
S-LOC 18L	500-½ 371 (400-½)		500-¾ 371 (400-¾)	
CIRCLING	600-1 469 (500-1)		600-1½ 469 (500-1½) 700-2 569 (600-2)	
GREENWOOD ALTIMETER SETTING MINIMUMS				
S-ILS 18L	529-¾ 400 (400-¾)			
S-LOC 18L	700-¾ 571 (600-¾)		700-1 571 (600-1) 700-1¼ 571 (600-1¼)	
CIRCLING	800-1¼ 669 (700-1¼)		800-2 669 (700-2) 800-2¼ 669 (700-2¼)	