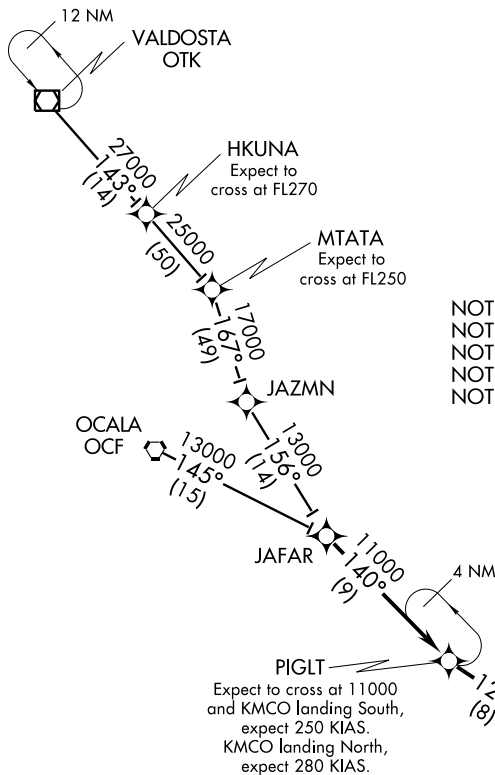


ORLANDO APP CON  
125.55 338.2  
ORLANDO INTL ATIS  
121.25



- NOTE: Radar Required.
- NOTE: DME/DME/IRU or GPS Required.
- NOTE: RNAV 1.
- NOTE: Turbojet aircraft only.
- NOTE: For non-GPS equipped aircraft, OMN and ORL must be operational.

ARRIVAL ROUTE DESCRIPTION

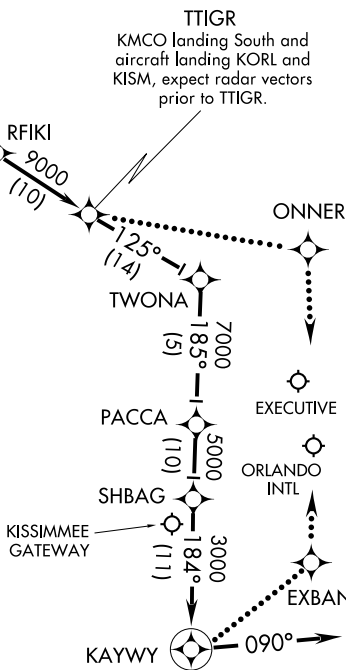
OCALA TRANSITION (OCF.PIGLT2):  
VALDOSTA TRANSITION (OTK.PIGLT2):

From over JAFAR via 140° track to PIGLT, thence as depicted to KAYWY.

LOST COMMUNICATIONS:

NORTH OPERATION: Continue track to JAFAR, track to KAYWY, track to EXBAN, then turn left to intercept RWY 36L final approach course, conduct approach.

SOUTH OPERATION: Continue track to JAFAR, track to TTIGR, track to ONNER, then turn right to intercept RWY 18R final approach course, conduct approach.



NOTE: Chart not to scale.

SE-3, 22 OCT 2009 to 19 NOV 2009

SE-3, 22 OCT 2009 to 19 NOV 2009