

MINEE FOUR ARRIVAL (MINEE.MINEE4)

ORLANDO, FLORIDA

SE-3, 22 OCT 2009 to 19 NOV 2009

BOXKR TRANSITION (BOXKR.MINEE4): From over BOXKR INT via LAL R-250 to LAL VORTAC, then via LAL R-060 to MINEE INT. Thence,

LA BELLE TRANSITION (LBV.MINEE4): From over LBV VORTAC via LBV R-334 to DOWNN INT, then via RSW R-003 to MINEE INT. Thence,

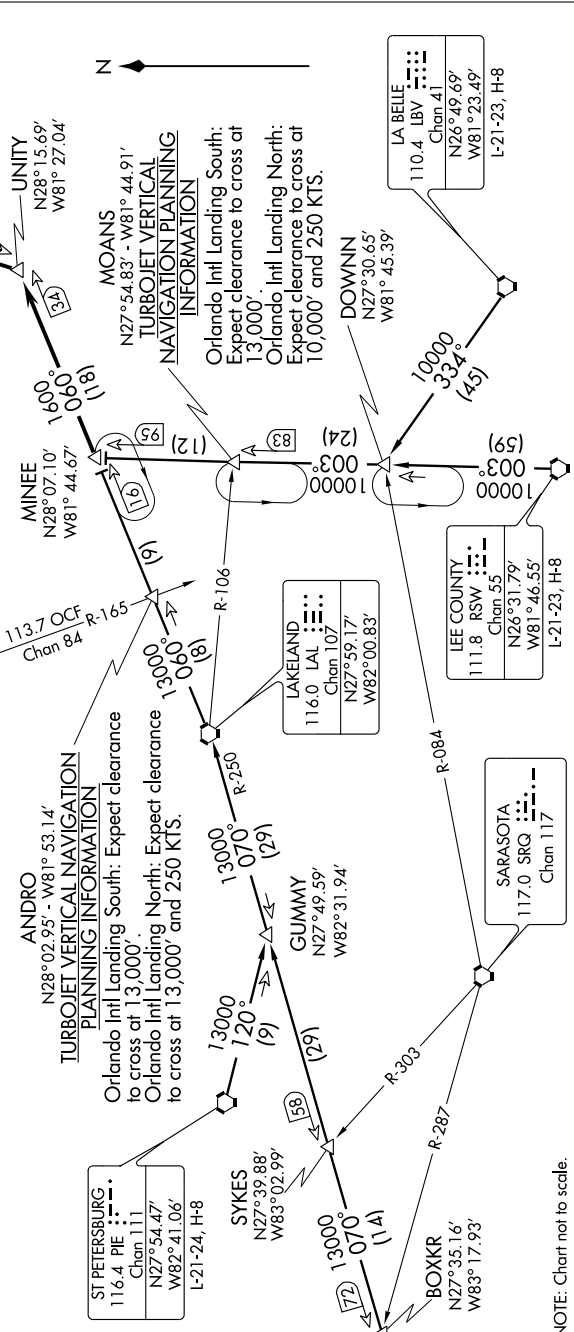
LEE COUNTY TRANSITION (RSW.MINEE4): From over RSW VORTAC via RSW R-003 to MINEE INT. Thence,

ST. PETERSBURG TRANSITION (PIE.MINEE4): From over PIE VORTAC via PIE R-120 to GUMMY INT, then via LAL R-250 to LAL VORTAC, then via LAL R-060 to MINEE INT. Thence,

... From over MINEE INT via LAL R-060 to UNITY INT, then via ORL R-200 to ORL VORTAC.

LEESBURG INTL: Expect radar vectors to airport after UNITY INT.

ALL OTHER AIRPORTS: Expect radar vectors to final approach course after UNITY INT.



MINEE FOUR ARRIVAL (MINEE.MINEE4)

ORLANDO, FLORIDA

SE-3, 22 OCT 2009 to 19 NOV 2009