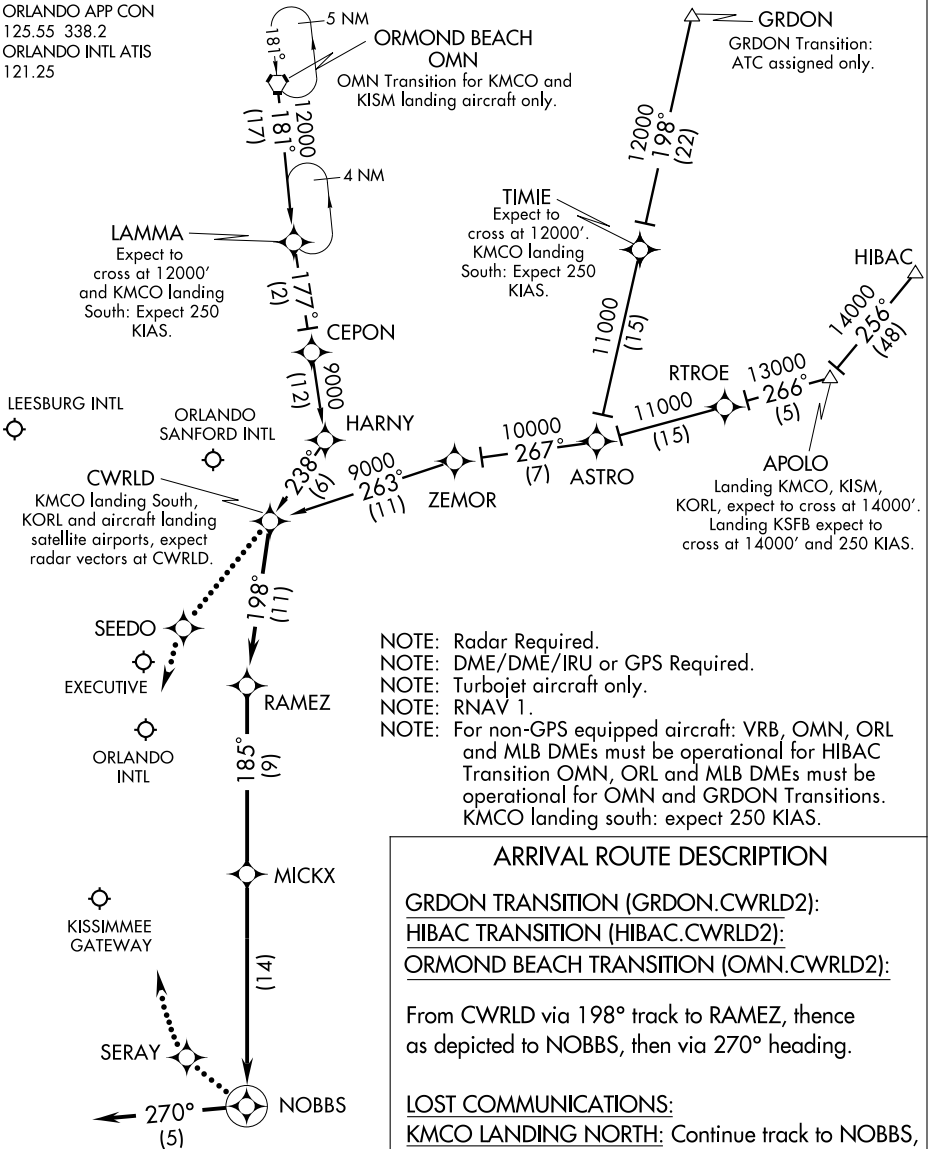


CWRLD TWO ARRIVAL (RNAV)

ORLANDO, FLORIDA

ORLANDO APP CON
125.55 338.2
ORLANDO INTL ATIS
121.25



- NOTE: Radar Required.
- NOTE: DME/DME/IRU or GPS Required.
- NOTE: Turbojet aircraft only.
- NOTE: RNAV 1.
- NOTE: For non-GPS equipped aircraft: VRB, OMN, ORL and MLB DMEs must be operational for HIBAC Transition. OMN, ORL and MLB DMEs must be operational for OMN and GRDON Transitions. KMCO landing south: expect 250 KIAS.

ARRIVAL ROUTE DESCRIPTION

GRDON TRANSITION (GRDON.CWRLD2):
HIBAC TRANSITION (HIBAC.CWRLD2):
ORMOND BEACH TRANSITION (OMN.CWRLD2):

From CWRLD via 198° track to RAMEZ, thence as depicted to NOBBS, then via 270° heading.

LOST COMMUNICATIONS:
KMCO LANDING NORTH: Continue track to NOBBS, then proceed direct to SERAY, turn right to intercept RWY 35R final approach course, conduct approach.
KMCO LANDING SOUTH: Continue track to CWRLD, then proceed direct to SEEDO, turn left to intercept RWY 17L final approach course, conduct approach.

NOTE: Chart not to scale.

SE-3, 22 OCT 2009 to 19 NOV 2009

SE-3, 22 OCT 2009 to 19 NOV 2009