

# BAIRN TWO ARRIVAL (RNAV)

ORLANDO, FLORIDA

ORLANDO APP CON  
125.55 338.2  
ORLANDO INTL ATIS  
121.25

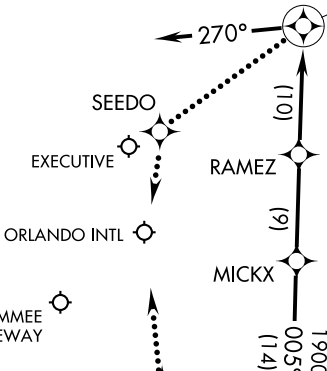
LEESBURG  
INTL

ORLANDO  
SANFORD INTL

POPYE

KMCO Landing South:  
Expect radar vectors  
after POPYE.

- NOTE: Radar Required.
- NOTE: DME/DME/IRU or GPS Required.
- NOTE: RNAV 1.
- NOTE: For non-GPS equipped aircraft: PHK, MLB, VRB and ORL must be operational for the PBI and PHK Transitions.
- NOTE: MLB and ORL must be operational for the VRB Transition.
- NOTE: TURBOJET/TURBOPROP aircraft only.



NOBBS  
Landing KISM, KORL, KSF, KLEE:  
Expect radar vectors after NOBBS.  
KMCO Landing North: Expect radar  
vectors after NOBBS.

## BAIRN VERTICAL NAVIGATION PLANNING

KMCO Landing South:  
Expect to cross at 11000.  
KMCO Landing North:  
Expect to cross at 8000.  
Landing KISM: Expect to  
cross at 8000.

## ARRIVAL ROUTE DESCRIPTION

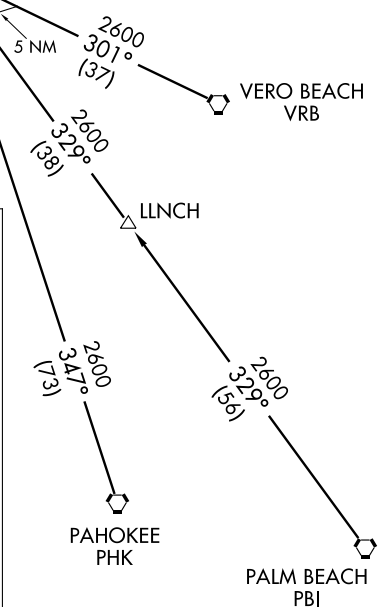
- PAHOKEE TRANSITION (PHK.BAIRN2):
- PALM BEACH TRANSITION (PBI.BAIRN2):
- VERO BEACH TRANSITION (VRB.BAIRN2):

From over BAIRN via 349° track to NOBBS, thence as depicted to POPYE.

### LOST COMMUNICATIONS:

KMCO LANDING NORTH: Continue track to NOBBS, then proceed direct to SERAY, turn right to intercept RWY 35R final approach course, conduct approach.

KMCO LANDING SOUTH: Continue track to POPYE, then proceed direct to SEEDO, turn left to intercept RWY 17L final approach course, conduct approach.



NOTE: Chart not to scale.

# BAIRN TWO ARRIVAL (RNAV)

ORLANDO, FLORIDA