

PITTSBURGH, PENNSYLVANIA

AL-570 (FAA)

RNAV (GPS) Y RWY 28C

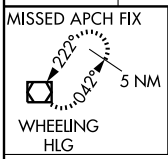
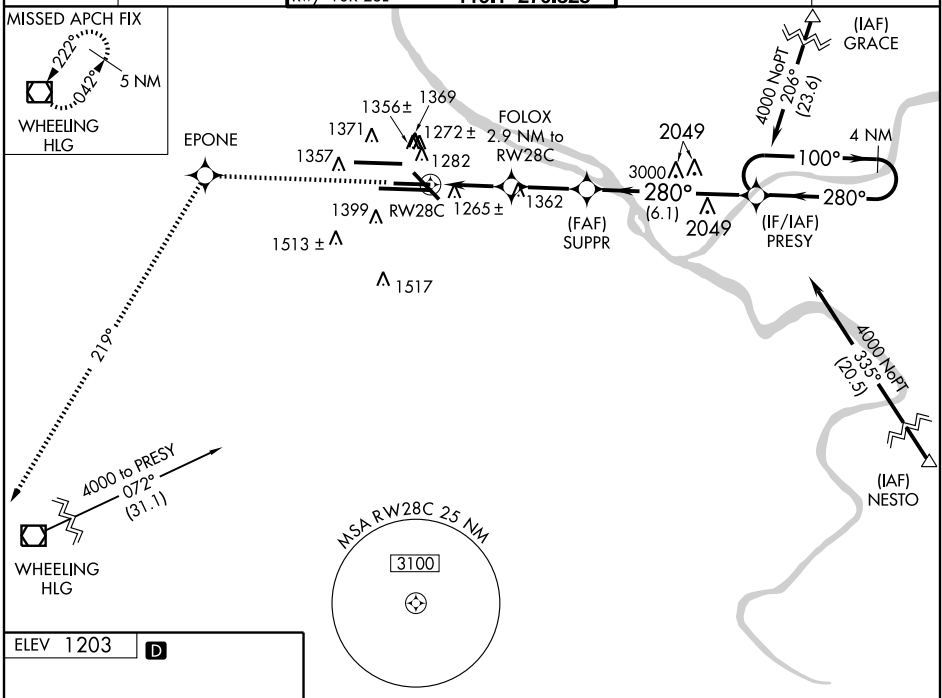
PITTSBURGH INTL (PIT)

WAAS CH 45527 W28A	APP CRS 280°	Rwy Idg TDZE Apt Elev	9709 1134 1203
--	------------------------	-----------------------------	---

▼ For uncompensated Baro-VNAV systems, procedure NA below -17°C (2°F) or above 46°C (114°F). DME/DME RNP-0.3 NA. Visibility reduction by helicopters NA.

MISSED APPROACH: Climb to 4000 direct EPONE and via 219° track to HLG VOR/DME and hold.

ATIS ARR 127.25 DEP 135.9	PITTSBURGH APP CON 123.95 360.8	PITTSBURGH TOWER Rwys 10L-28R 128.3 291.7 Rwys 10C-28C, 14-32 135.025 270.325 Rwy 10R-28L 119.1 270.325	GND CON SOUTH 121.9 348.6 NORTH 127.8 348.6	CLNC DEL 126.75 353.7
---	---	---	---	---------------------------------

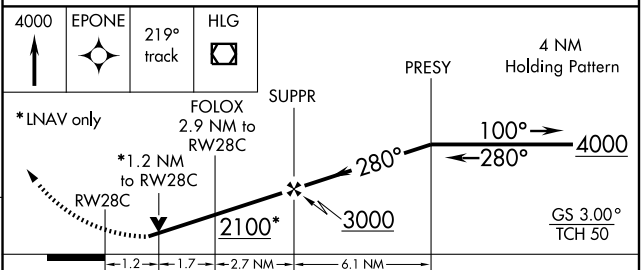


NE-4, 22 OCT 2009 to 19 NOV 2009

NE-4, 22 OCT 2009 to 19 NOV 2009

ELEV 1203 **D**

REIL Rwy 10C
TDZ/CL Rwys 10L, 10R, 28L, 28R, 28C, and 32
HIRL Rwys 10L-28R, 10C-28C, 10R-28L and 14-32



CATEGORY	A	B	C	D
LPV DA		1471/60	337 (300-1¼)	
LNAV/VNAV DA		1545-1½	411 (400-1½)	
LNAV MDA	1580/50	446 (400-1)	1580/60 446 (400-1¼)	1580-1½ 446 (400-1½)
CIRCLING	1700-1	497 (500-1)	1700-1½ 497 (500-1½)	1760-2 557 (600-2)

PITTSBURGH, PENNSYLVANIA
Amdt 4 09183

40°29'N - 80°14'W

RNAV (GPS) Y RWY 28C