

RNAV (GPS) Y RWY 10R

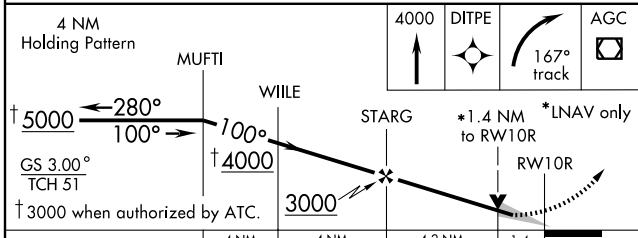
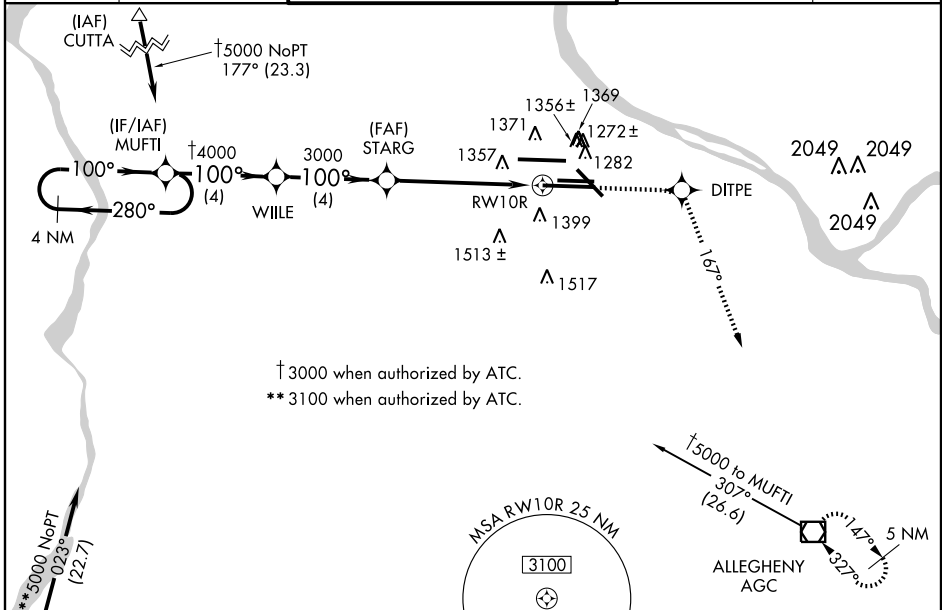
PITTSBURGH INTL (PIT)

WAAS CH 86226 W10D	APP CRS 100°	Rwy Idg TDZE Apt Elev	11500 1135 1203
--	------------------------	-----------------------------	--

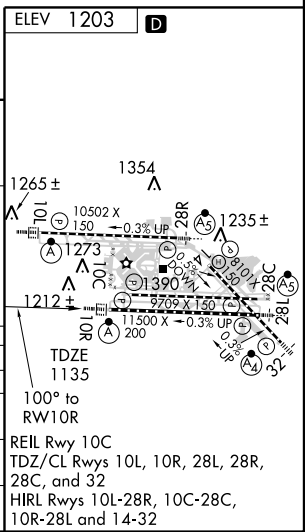
For inoperative ALSF-2, increase LPV visibility to RVR 5000 all Cats.
For uncompensated Baro-VNAV systems, LNAV/VNAV NA below -17°C (2°F) or above 46°C (114°F). Hold in lieu altitude: 3000 when authorized by ATC. DME/DME RNP-0.3 NA.

ALSF-2
MISSED APPROACH: Climb to 4000 direct DITPE and right turn via 167° track to AGC VOR/DME and hold.

ATIS ARR 127.25 DEP 135.9	PITTSBURGH APP CON 123.95 360.8	PITTSBURGH TOWER Rwys 10L-28R 128.3 291.7 Rwys 10C-28C, 14-32 135.025 270.325 Rwy 10R-28L 119.1 270.325	GND CON SOUTH 121.9 348.6 NORTH 127.8 348.6	CLNC DEL 126.75 353.7
---	---	---	---	---------------------------------



CATEGORY	A	B	C	D
LPV DA	1443/24 308 (400-½)			
LNAV/VNAV DA	1658/60 523 (600-1¼)			
LNAV MDA	1620/24	485 (500-½)	1620/40 485 (500-¾)	1620/50 485 (500-1)
CIRCLING	1700-1	497 (500-1)	1700-1½ 497 (500-1½)	1760-2 557 (600-2)



NE-4, 22 OCT 2009 to 19 NOV 2009

NE-4, 22 OCT 2009 to 19 NOV 2009