

# RNAV (GPS) Y RWY 10C

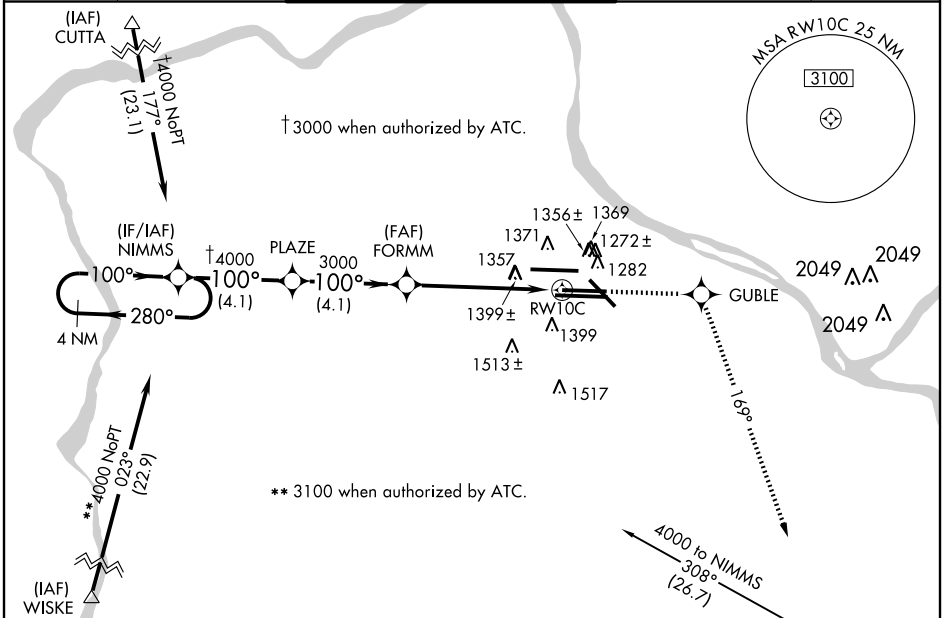
PITTSBURGH INTL (PIT)

WAAS CH <b>90126</b> <b>W10A</b>	APP CRS <b>100°</b>	Rwy Idg TDZE Apt Elev	<b>9709</b> <b>1141</b> <b>1203</b>
--	------------------------	-----------------------------	---

For uncompensated Baro-VNAV systems, LNAV/VNAV NA below -17°C (2°F) or above 46°C (114°F). DME/DME RNP-0.3 NA.

MISSED APPROACH: Climb to 4000 direct GUBLE and right turn via 169° track to AGC VOR/DME and hold.

ATIS ARR <b>127.25</b> DEP <b>135.9</b>	PITTSBURGH APP CON <b>123.95 360.8</b>	PITTSBURGH TOWER Rwys 10L-28R <b>128.3 291.7</b> Rwys 10C-28C, 14-32 <b>135.025 270.325</b> Rwy 10R-28L <b>119.1 270.325</b>	GND CON SOUTH <b>121.9 348.6</b> NORTH <b>127.8 348.6</b>	CLNC DEL <b>126.75 353.7</b>
---	---	---	---	---------------------------------

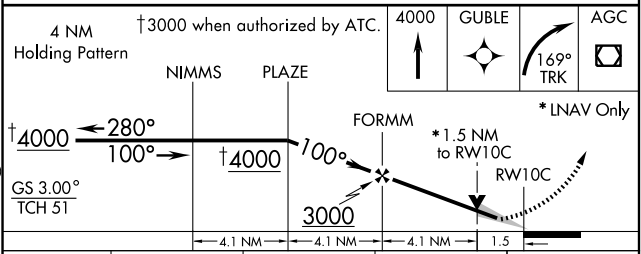


NE-4, 22 OCT 2009 to 19 NOV 2009

NE-4, 22 OCT 2009 to 19 NOV 2009

ELEV 1203 **D**

REIL Rwy 10C  
TDZ/CL Rwys 10L, 10R, 28L, 28R, 28C, and 32  
HIRL Rwys 10L-28R, 10C-28C, 10R-28L and 14-32



CATEGORY	A	B	C	D
LPV DA		1438/50	297 (300-1)	
LNAV/VNAV DA		1634-1¾	493 (500-1¾)	
LNAV MDA	1660/50	519 (500-1)	1660-1½ 519 (500-1½)	1660-1¾ 519 (500-1¾)
CIRCLING	1700-1	497 (500-1)	1700-1½ 497 (500-1½)	1760-2 557 (600-2)