


RNAV (RNP) Z RWY 28L

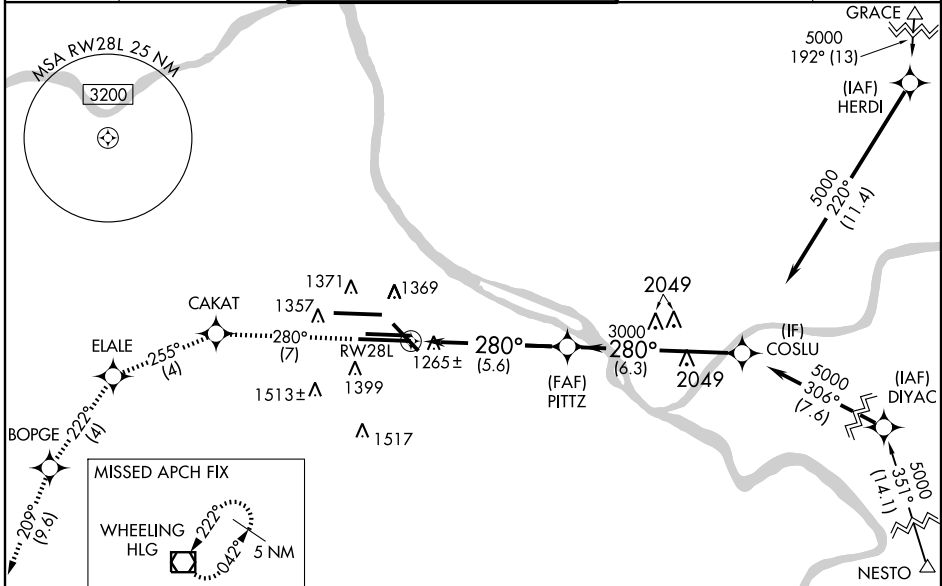
PITTSBURGH INTL (PIT)

APP CRS	Rwy ldg	11500
280°	TDZE	1125
	Apt Elev	1203

▼ For uncompensated Baro-VNAV systems procedure NA below -17°C (1°F) or above 46°C (116°F). GPS Required. For inoperative MALSRL, increase RNP 0.13 all Cats visibility to RVR 6000 and RNP 0.30 all Cats visibility to 1½ mile. Visibility reduction by helicopters NA.

MALSRL  MISSED APPROACH: Climb to 4000 via track 280° to CAKAT and via track 255° to ELALE and via track 222° to BOPGE and via track 209° to HLG VOR/DME and hold.

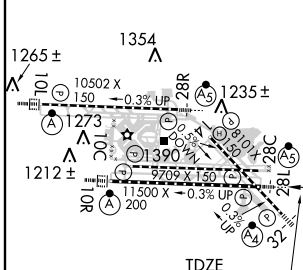
ATIS	PITTSBURGH APP CON	PITTSBURGH TOWER	GND CON	CLNC DEL
ARR 127.25	123.95 360.8	Rwys 10L-28R 128.3 291.7	SOUTH 121.9 348.6	126.75 353.7
DEP 135.9		Rwys 10C-28C, 14-32 135.025 270.325	NORTH 127.8 348.6	
		Rwy 10R-28L 119.1 270.325		



NE-4, 22 OCT 2009 to 19 NOV 2009

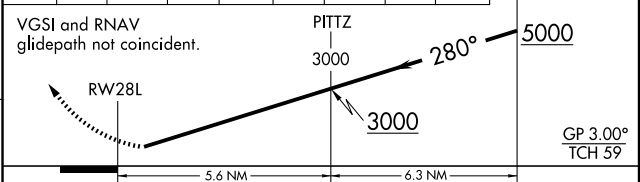
NE-4, 22 OCT 2009 to 19 NOV 2009

ELEV 1203	D
-----------	----------



REIL Rwy 10C
 TDZ/CL Rwys 10L, 10R, 28L, 28R,
 28C, and 32
 HIRL Rwys 10L-28R, 10C-28C,
 10R-28L and 14-32

4000	trk 280°	CAKAT	trk 255°	ELALE	trk 222°	BOPGE	trk 209°	HLG	Procedure Turn NA
------	----------	-------	----------	-------	----------	-------	----------	-----	-------------------



CATEGORY	A	B	C	D
RNP 0.13 DA		1524/50	399 (400-1)	
RNP 0.30 DA		1569/50	444 (400-1)	

SPECIAL AIRCRAFT & AIRCREW AUTHORIZATION REQUIRED