

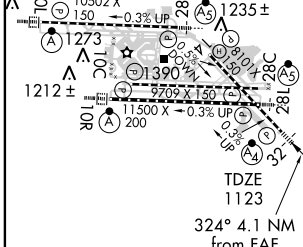
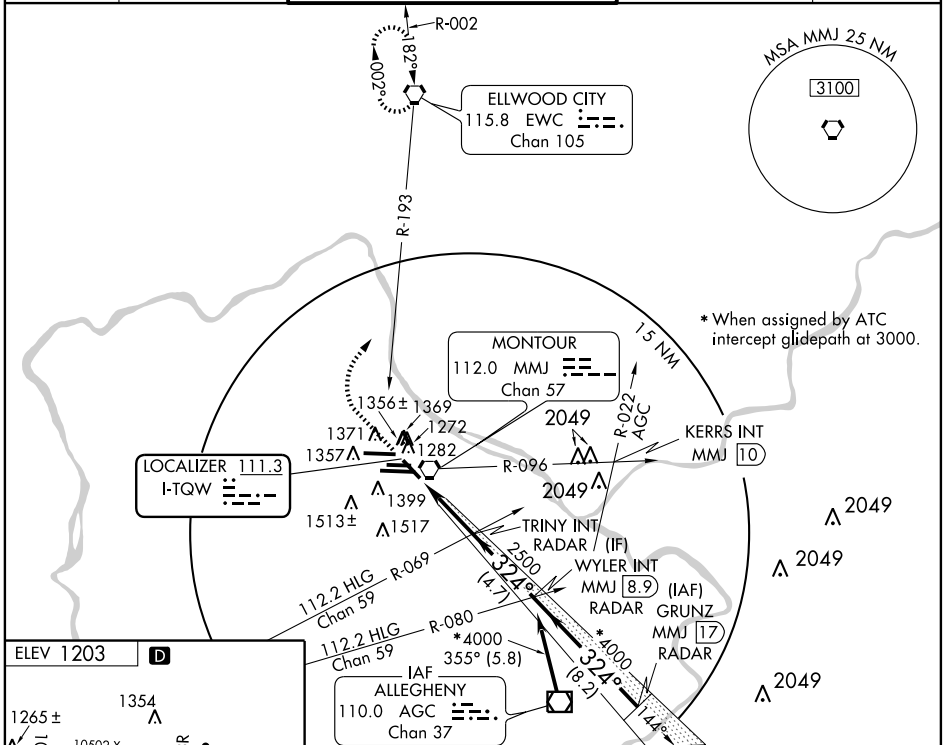
ILS or LOC RWY 32

PITTSBURGH INTL (PIT)

LOC I-TQW 111.3	APP CRS 324°	Rwy ldg TDZE Apt Elev	8101 1123 1203
---------------------------	------------------------	-----------------------------	---

▼ Inoperative table does not apply to S-LOC 32 Cat C. **MALS** MISSED APPROACH: Climb to 4000 via heading 324° and EWC VORTAC R-193 to EWC VORTAC and hold.

ATIS ARR 127.25 DEP 135.9	PITTSBURGH APP CON 123.95 360.8	PITTSBURGH TOWER Rwys 10L-28R 128.3 291.7 Rwys 10C-28C, 14-32 135.025 270.325 Rwy 10R-28L 119.1 270.325	GND CON SOUTH 121.9 348.6 NORTH 127.8 348.6	CLNC DEL 126.75 353.7
---	---	---	---	---------------------------------



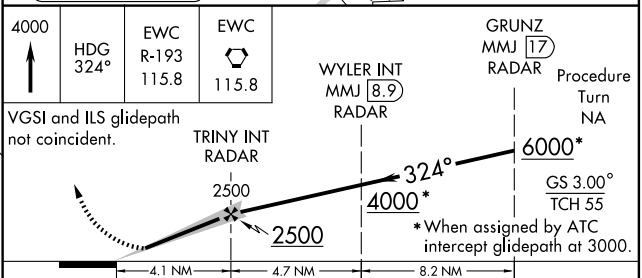
ELEV 1203 **D**

REIL Rwy 10C
TDZ/CL Rwys 10L, 10R, 28L, 28R, and 32

HIRL Rwys 10L-28R, 10C-28C
10R-28L and 14-32

FAF to MAP 4.1 NM

Knots	60	90	120	150	180
Min:Sec	4:06	2:44	2:03	1:38	1:22



CATEGORY	A	B	C	D
S-ILS 32	1323/40 200 (200-¾)			
S-LOC 32	1600/40	477 (500-¾)	1600/60 477 (500-1¼)	1600-1½ 477 (500-1½)
CIRCLING	1700-1	497 (500-1)	1700-1½ 497 (500-1½)	1760-2 557 (600-2)

NE-4, 22 OCT 2009 to 19 NOV 2009

NE-4, 22 OCT 2009 to 19 NOV 2009