

PITTSBURGH, PENNSYLVANIA

AL-570 (FAA)

LOC I-PFS 108.9	APP CRS 280°	Rwy Idg 28L 11500 28C 9709 TDZE 1125 1134 Apt Elev 1203 1203
---------------------------	------------------------	---

ILS RWY 28L (CAT II)

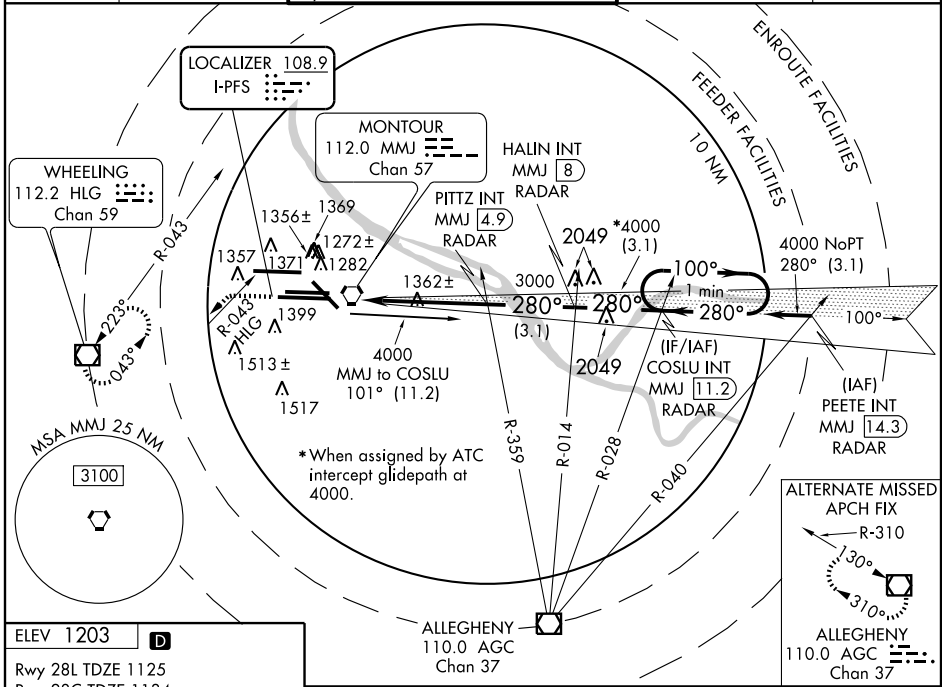
PITTSBURGH INTL (PIT)

Simultaneous approach authorized with Rwy 28R.
Cat II procedure does not meet ICAO standard for ALSF/TDZ/CL lighting systems. Authorization to conduct this approach requires specific OPSSEC approval of LOA for this runway.



MISSED APPROACH: Climb to 4000 via heading 280° and HLG R-043 to HLG VOR/DME and hold. (TACAN only aircraft...RADAR REQUIRED.)

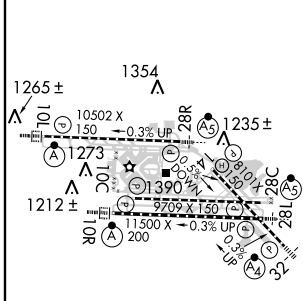
ATIS ARR 127.25 DEP 135.9	PITTSBURGH APP CON 123.95 360.8	PITTSBURGH TOWER Rwys 10L-28R 128.3 291.7 Rwys 10C-28C, 14-32 135.025 270.325 Rwy 10R-28L 119.1 270.325	GND CON SOUTH 121.9 348.6 NORTH 127.8 348.6	CLNC DEL 126.75 353.7
---	---	---	---	---------------------------------



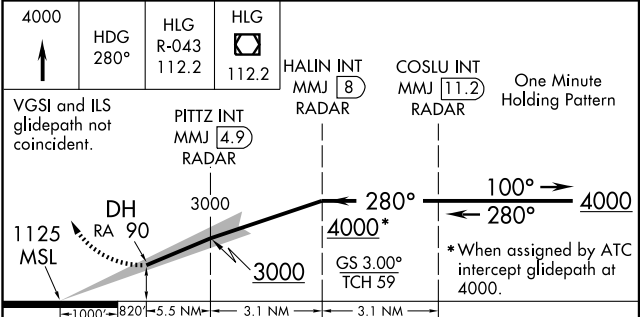
NE-4, 22 OCT 2009 to 19 NOV 2009

NE-4, 22 OCT 2009 to 19 NOV 2009

ELEV 1203	D
Rwy 28L TDZE 1125	
Rwy 28C TDZE 1134	



REIL Rwy 10C TDZ/CL Rwys 10L, 10R, 28L, 28R, 28C, and 32 HIRL Rwys 10L-28R, 10C-28C, 10R-28L and 14-32
--



CATEGORY	A	B	C	D
S-ILS 28L	1225/12 100 RA 90			

CATEGORY II ILS - SPECIAL AIRCREW & AIRCRAFT CERTIFICATION REQUIRED

PITTSBURGH, PENNSYLVANIA
Amdt 9 09183

40°29'N - 80°14'W

PITTSBURGH INTL (PIT)
ILS RWY 28L (CAT II)